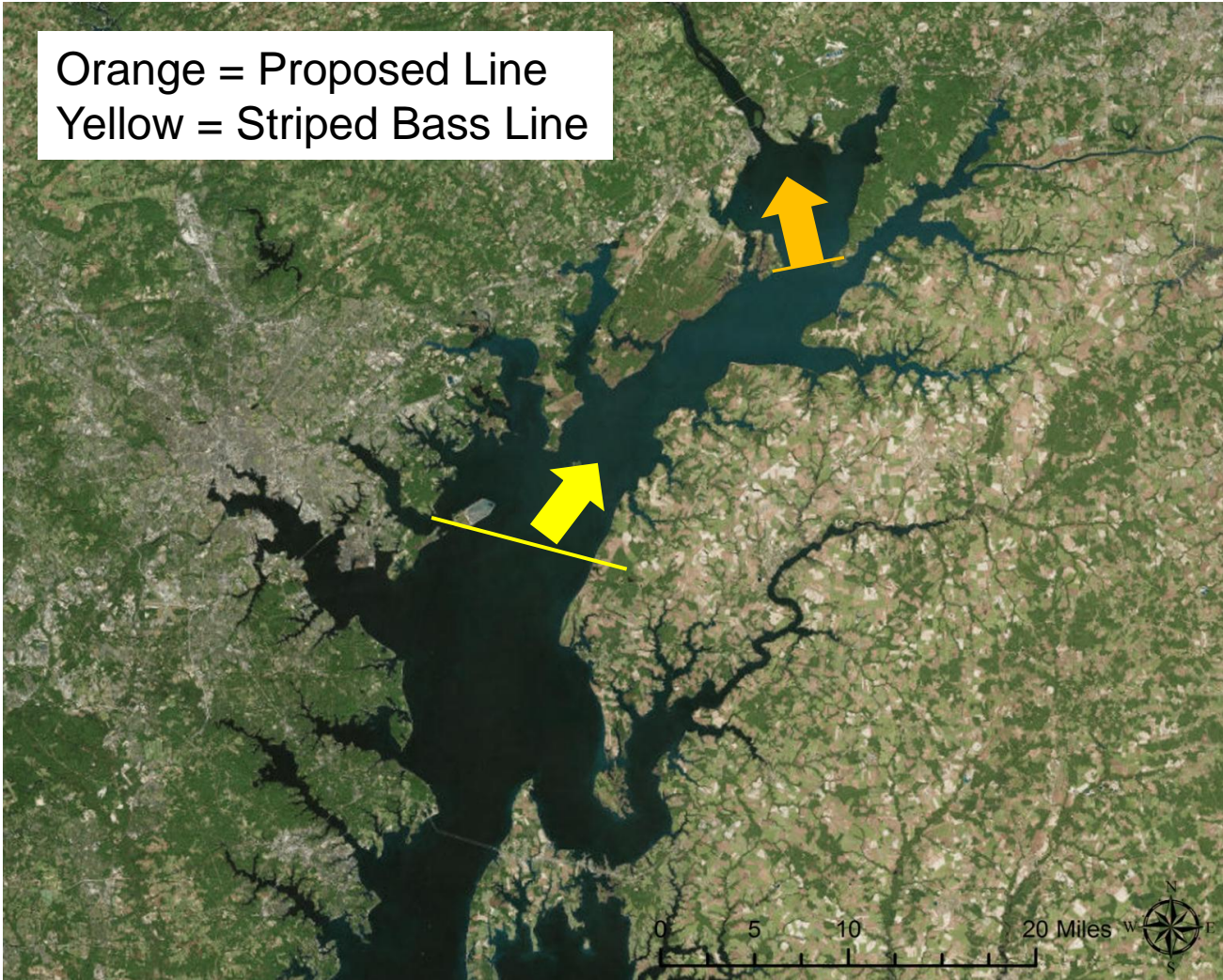


Method One: Possible Line Demarcation



Orange = Proposed Line
Yellow = Striped Bass Line



Strategies and Actions

Additional Actions?

Method Two: Implement No Target and/or Catch-and-Return Areas

Option 1. Institute year-round no target in 2 areas – one location in Upper Bay and one in Potomac River

Possible locations: all or upper Chicamuxen Creek; all or portions of Furnace Bay

Option 2. Institute year-round catch-and-return in 2 areas- one location in Upper Bay and one in Potomac River

Possible locations: all or upper Chicamuxen Creek; all or portions of Furnace Bay

Option 3. Institute year-round catch-and-return in four areas - two locations in Upper Bay and two in Potomac River

Possible locations: Piscataway Creek and upper Mattawoman Creek; all or portion of Furnance Bay (Mill Creek) and Swan Creek

Strategies and Actions (Continued)

Additional Actions?

Method Two: Implement No Target and/or Catch-and-Return Areas

Option 4. Institute spring (March 1 – June 15) catch-and-return in four areas - two locations in Upper Bay and two in Potomac River

Possible locations: Piscataway Creek and upper Mattawoman Creek; all or portion of Furnance Bay (Mill Creek) and Swan Creek

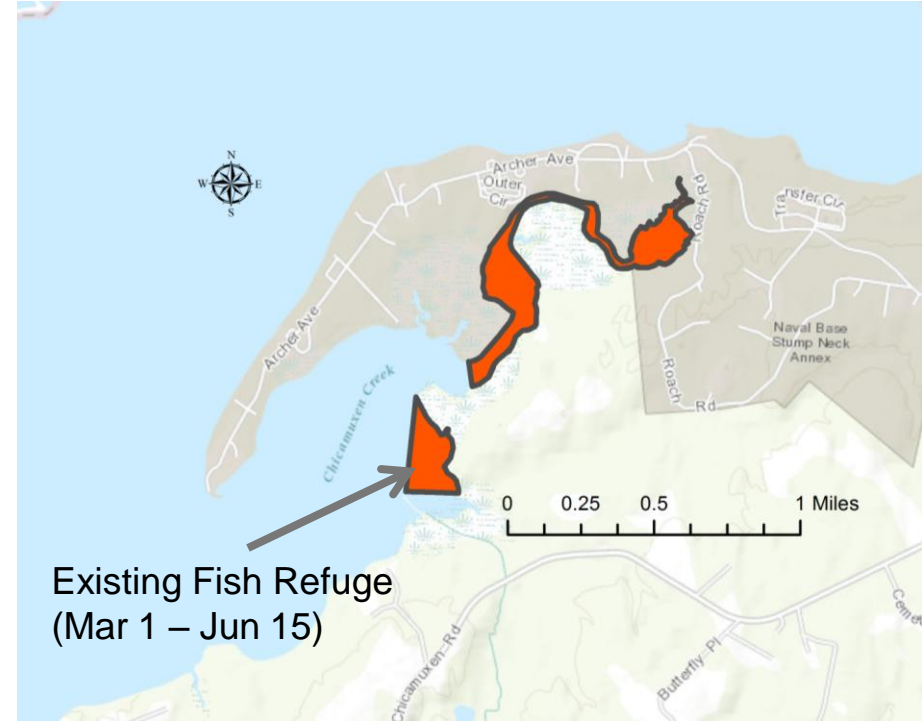
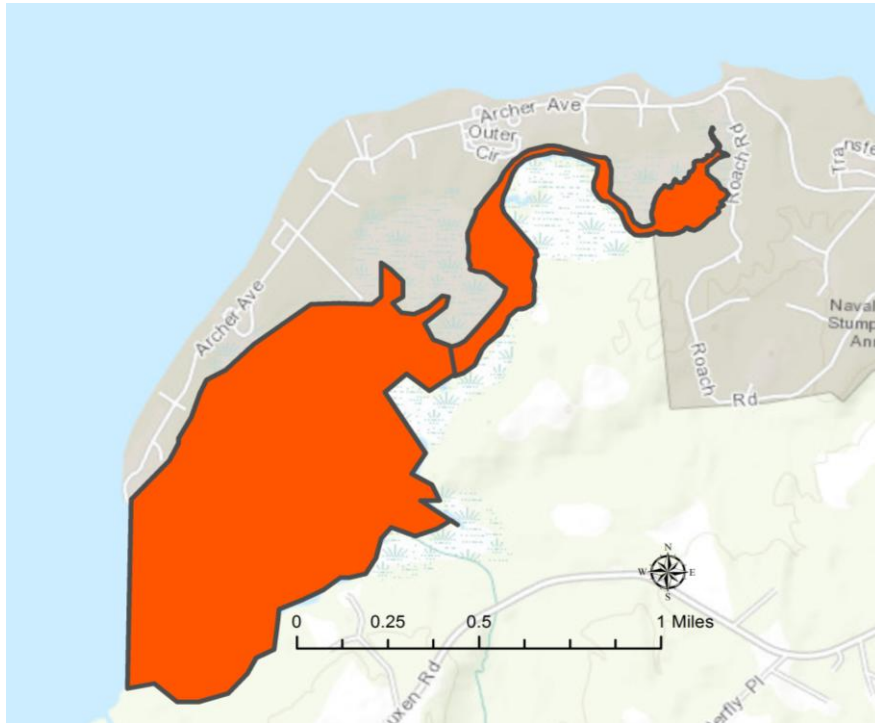
Option 5. Institute a mix of no target and catch-and-return during spring - two locations in Upper Bay and two in Potomac River

Possible locations: Piscataway Creek (no target) and upper Mattawoman Creek (catch and return); all or portion of Furnance Bay (Mill Creek) (no target) and Swan Creek (catch and return)

Option 6. Statewide, spring catch-and-return

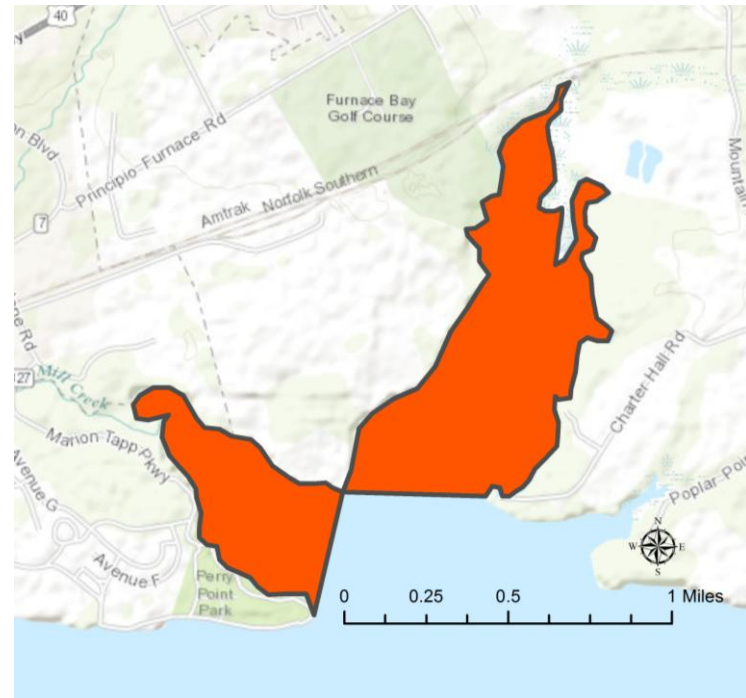
Location: Statewide

Chicamuxen Creek (All or Upper Chicamuxen Creek)



- Option 1: year-round, no target
- Option 2: year-round, catch-and-return
- Option 3: n/a
- Option 4: n/a
- Option 5: n/a
- Option 6: spring, catch-and-return statewide

All or portions of Furnace Bay(Mill Creek)

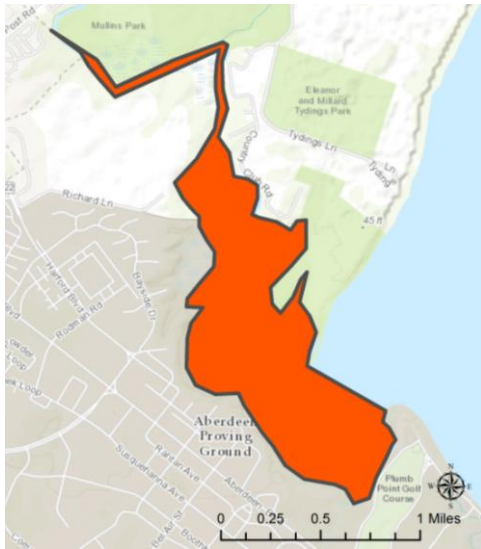


- Option 1: year-round, no target
- Option 2: year-round, catch-and-return
- Option 3: year-round, catch-and-return
- Option 4: spring, catch-and-return
- Option 5: spring, no target
- Option 6: spring, catch-and-return statewide

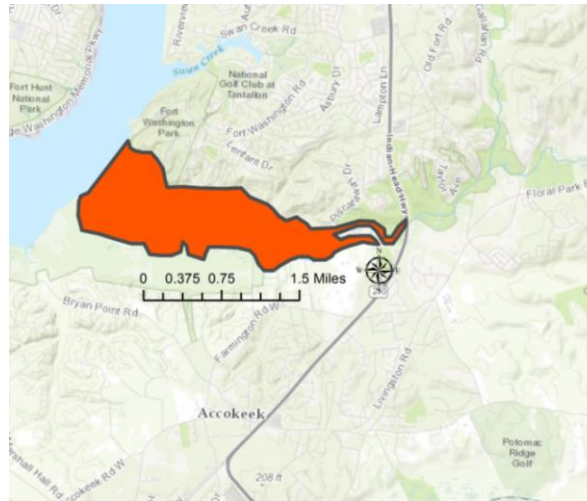
Swan Creek, Piscataway Creek, Mattawoman Creek



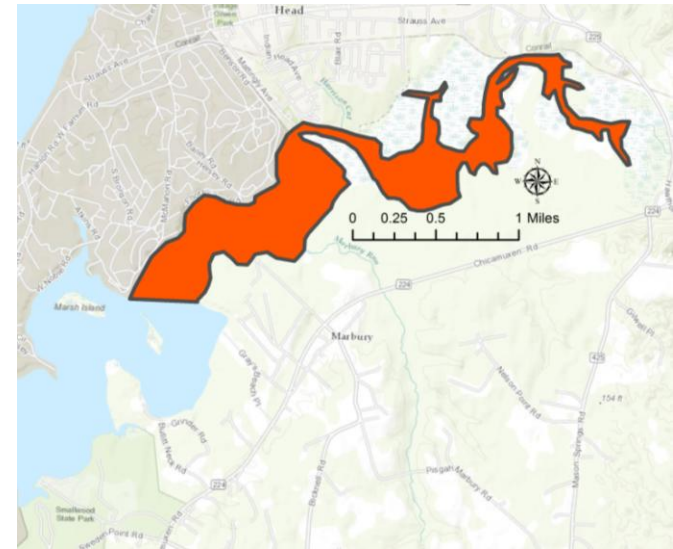
Swan Creek (upper Bay)



Piscataway Creek



upper Mattawoman Creek



- Option 1: n/a
- Option 2: n/a
- Option 3: year-round, catch-and-return
- Option 4: spring, catch-and-return
- Option 5: spring, no target (Piscataway), catch-and-return (upper Mattawoman, Swan)
- Option 6: spring, catch-and-return statewide