

# Oyster Sanctuary Population Surveys

Eric Weissberger

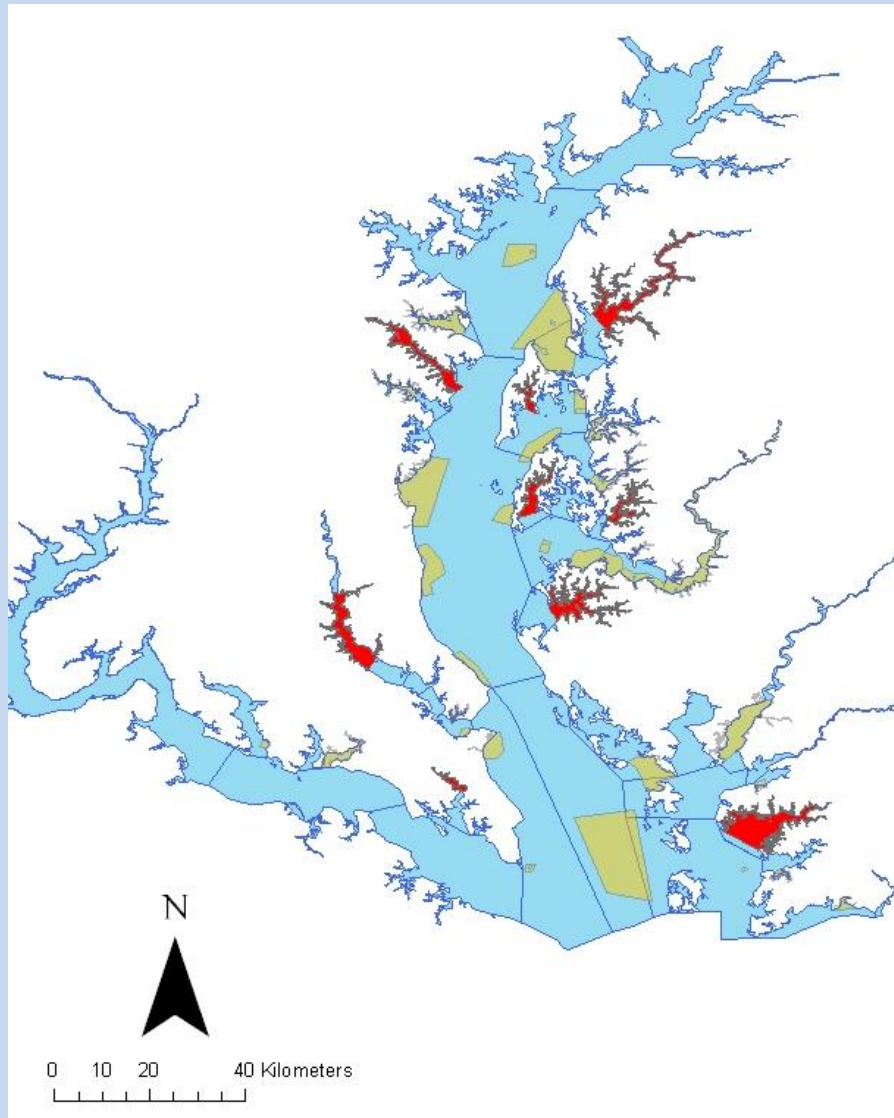
1 August 2012



Purpose:

Acquire baseline data on population density and distribution to determine the effectiveness of sanctuary program

# Sanctuaries Surveyed 2012

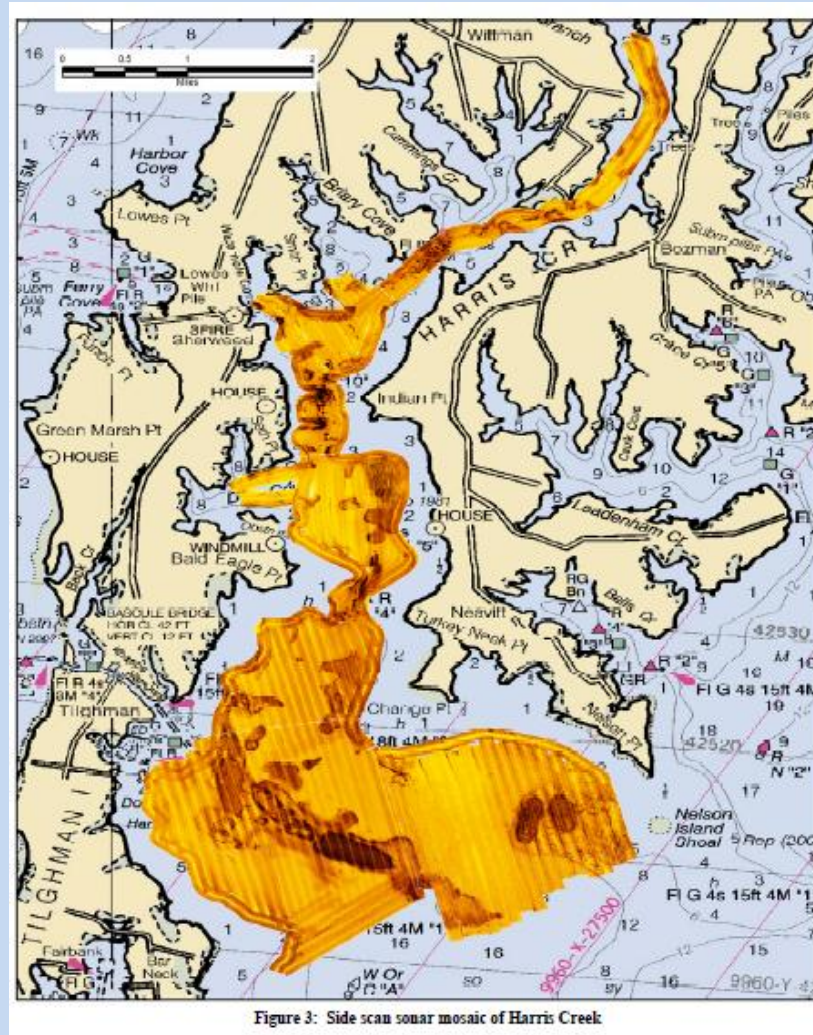


**Surveyed 2012**



**To be surveyed**

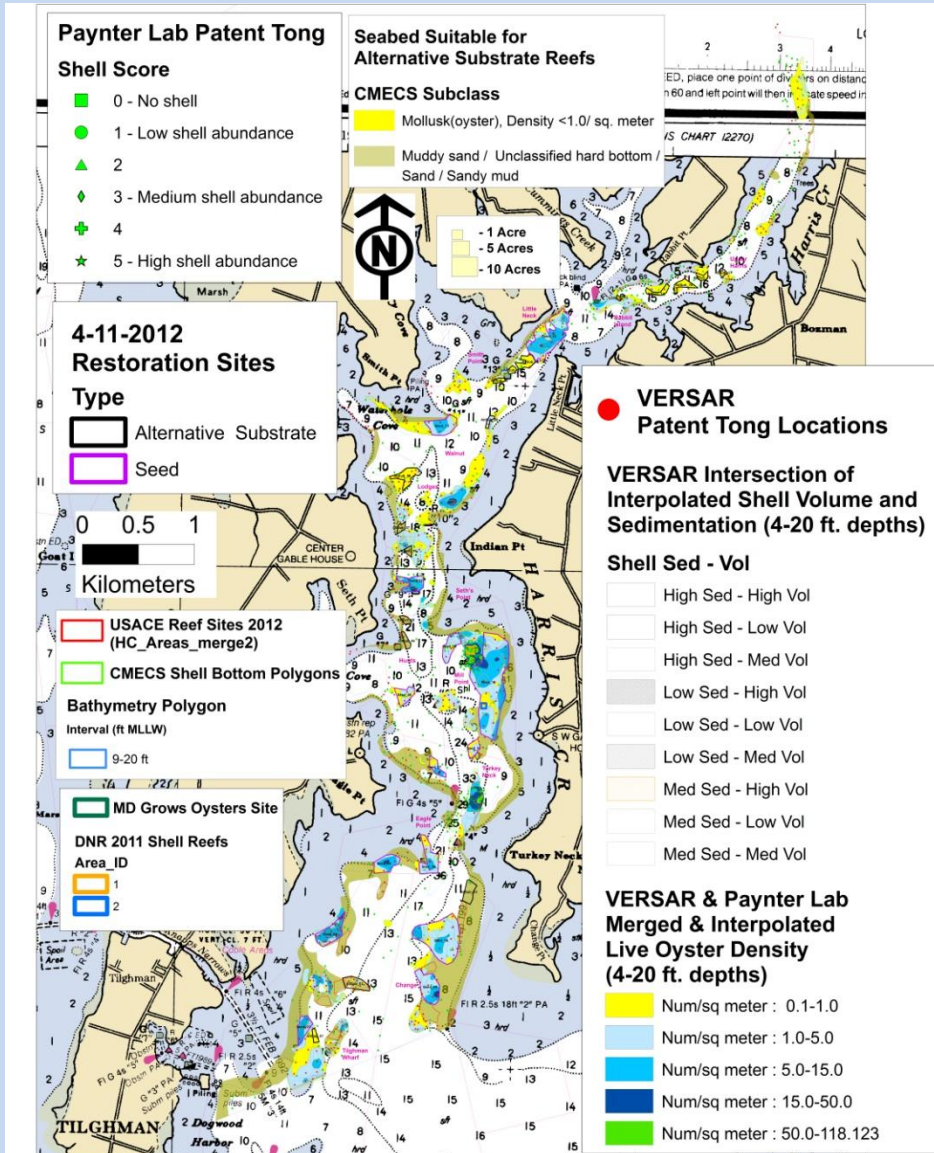
# Side Scan Sonar Bottom Survey



Data and map from Maryland Geological Survey



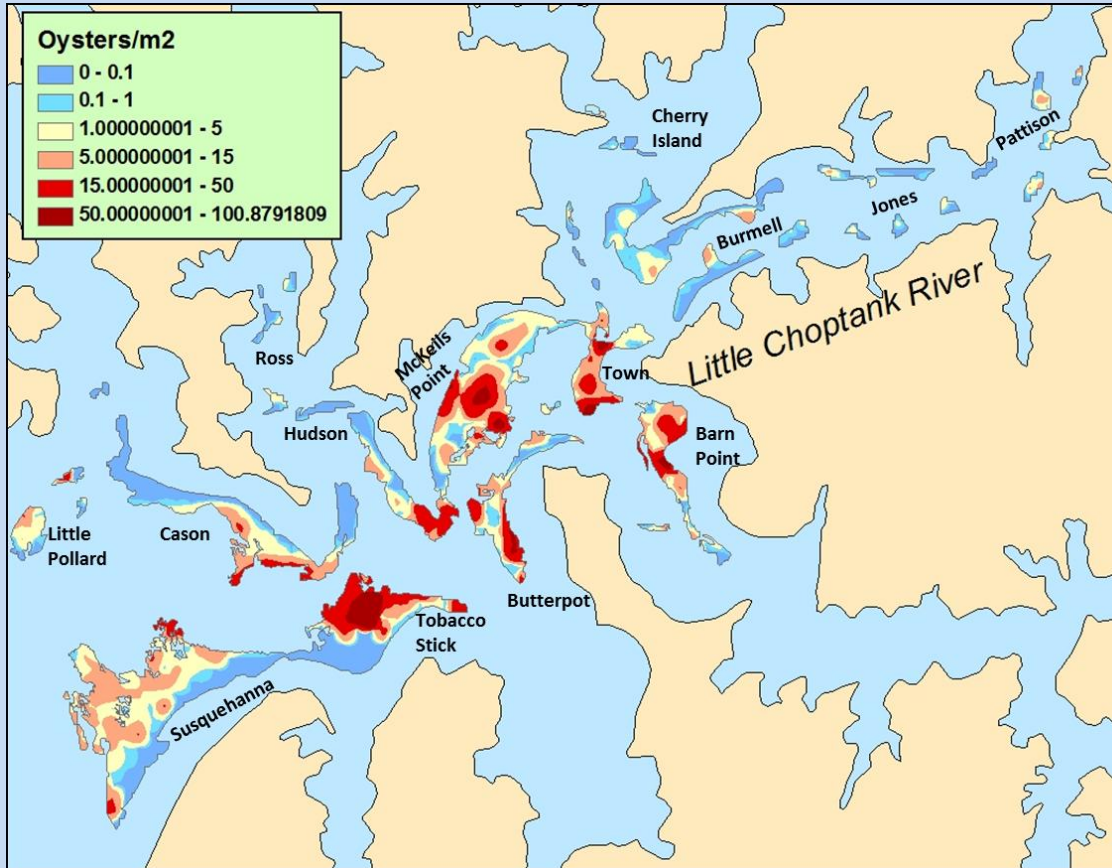
# Harris Creek



Harris Creek surveys performed by Ken Paynter (Univ. of MD) and Versar, funded by NOAA

Map made by David Bruce, NOAA

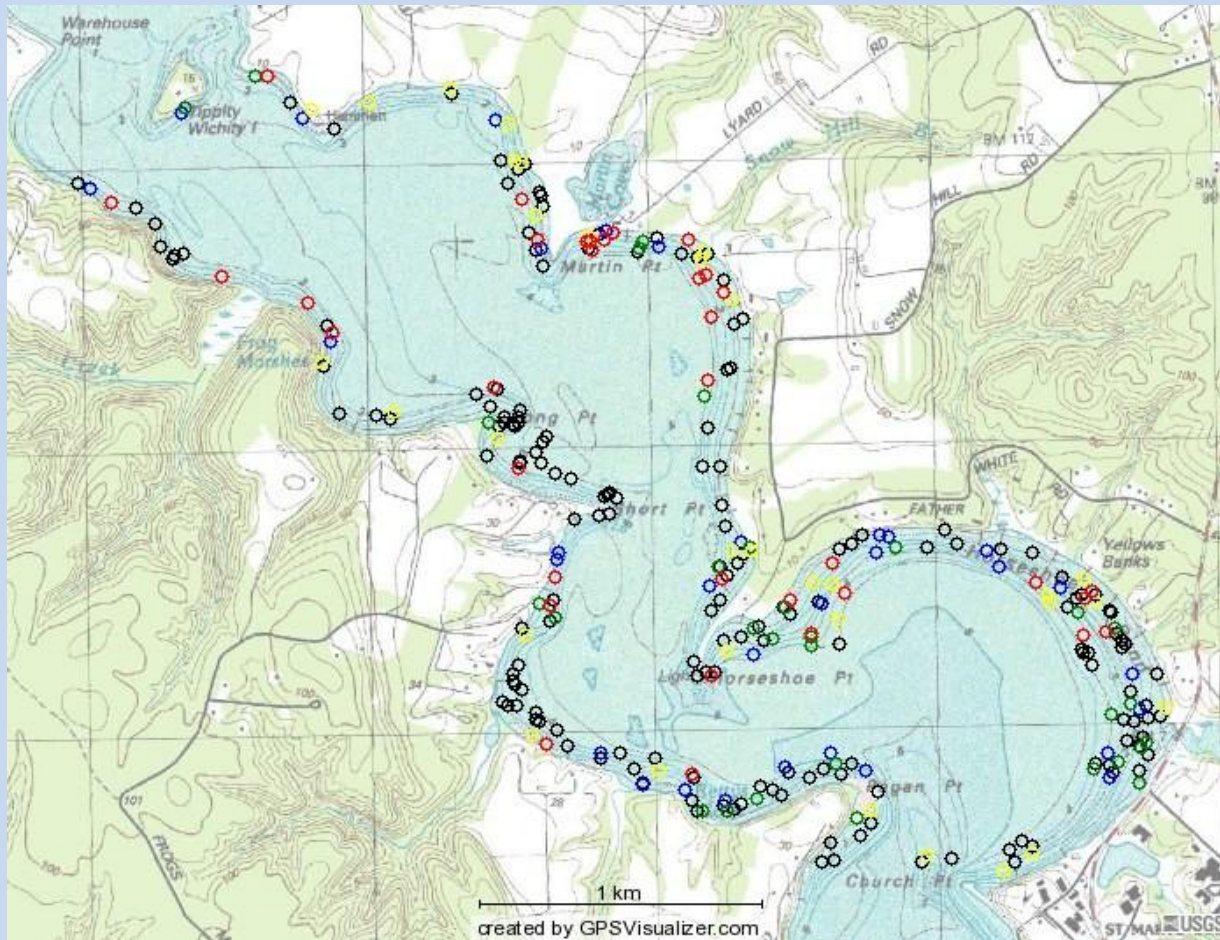
# Little Choptank River



Little Choptank surveys performed by Ken Paynter (Univ. of MD) and Versar , funded by NOAA

Map made by Versar

# St. Mary's River



Oyster Density  
No. per m<sup>2</sup>

○ 0

○ 1-5

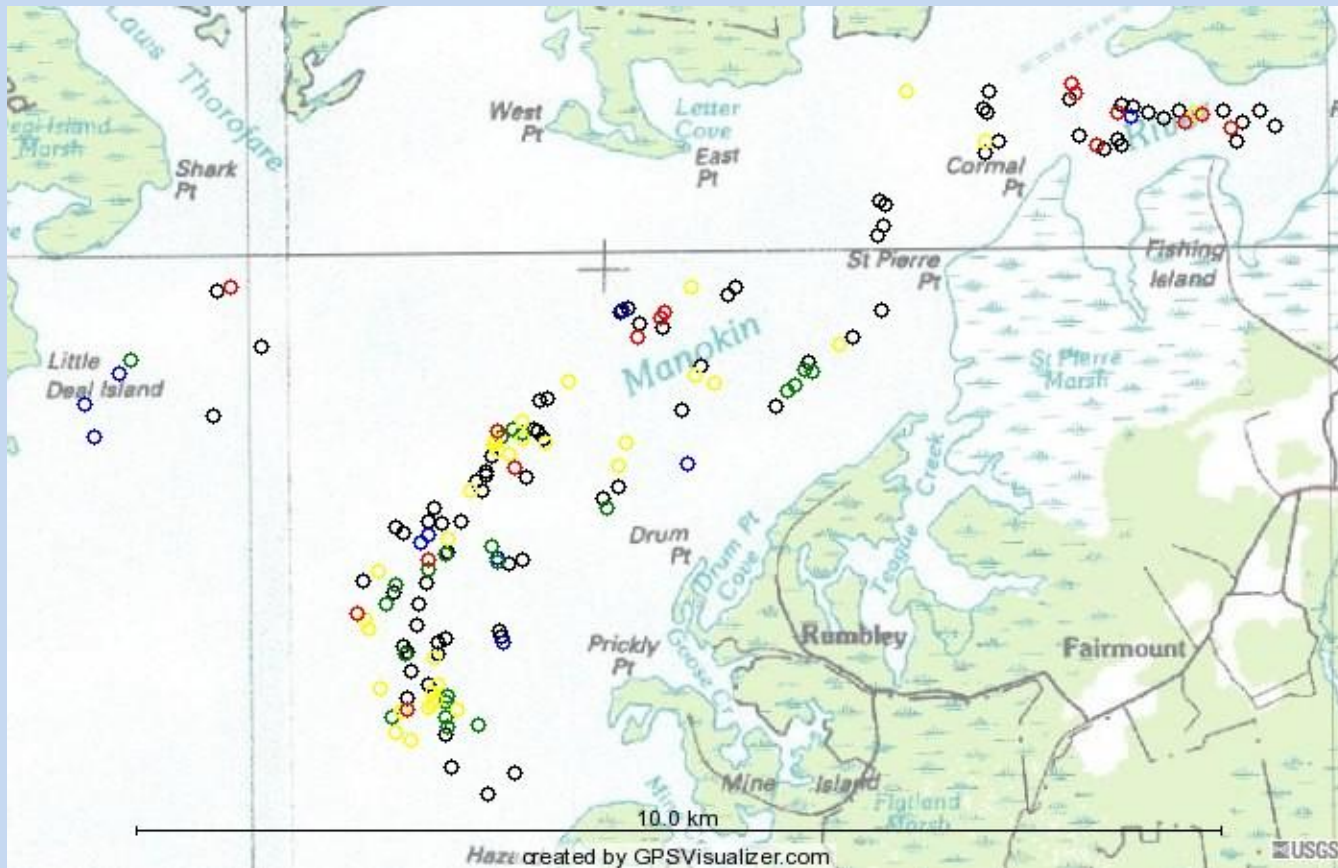
○ 6-15

○ 16-50

○ >50



# Manokin River



Oyster Density  
No. per m<sup>2</sup>

○ 0

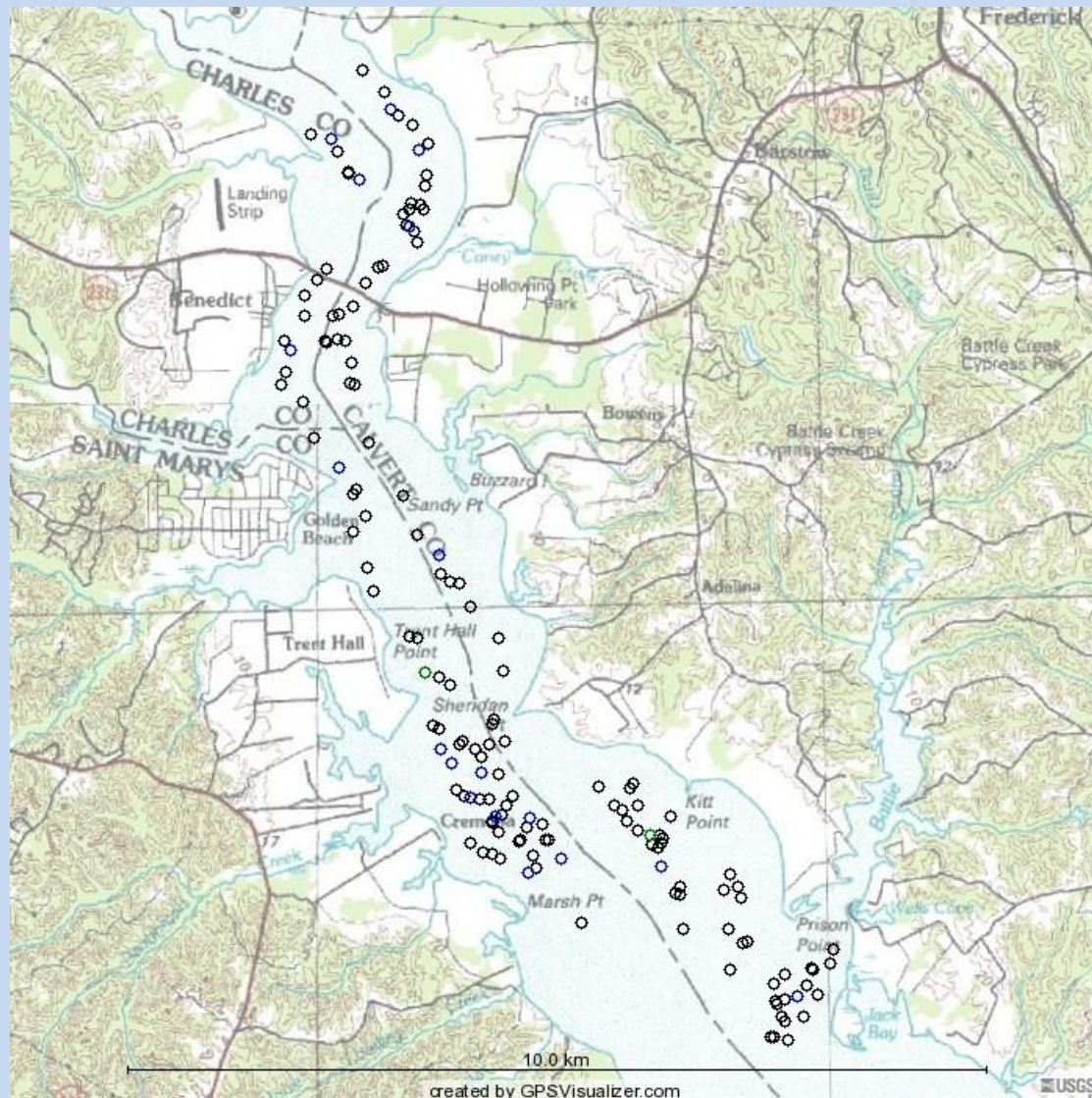
○ 1-5

○ 6-15

○ 16-50

○ >50

# Upper Patuxent River



Oyster Density  
No. per m<sup>2</sup>

○ 0

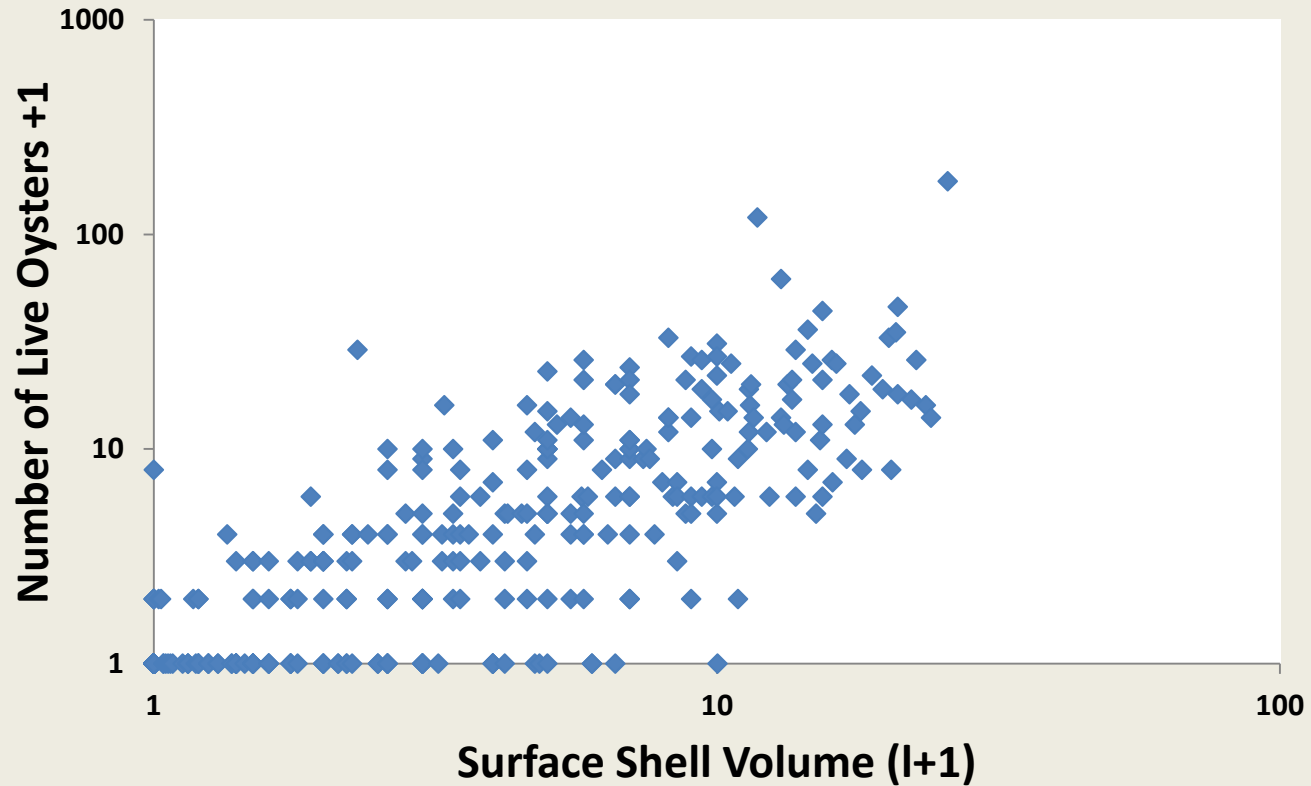
○ 1-5

○ 6-15

○ 16-50

○ >50

## Oyster Number vs. Surface Shell Volume (sans outlier)



Data for Harris Creek, collected by Versar