

Fisheries Service Organizational Chart Working Title



Thomas J. O'Connell, Director

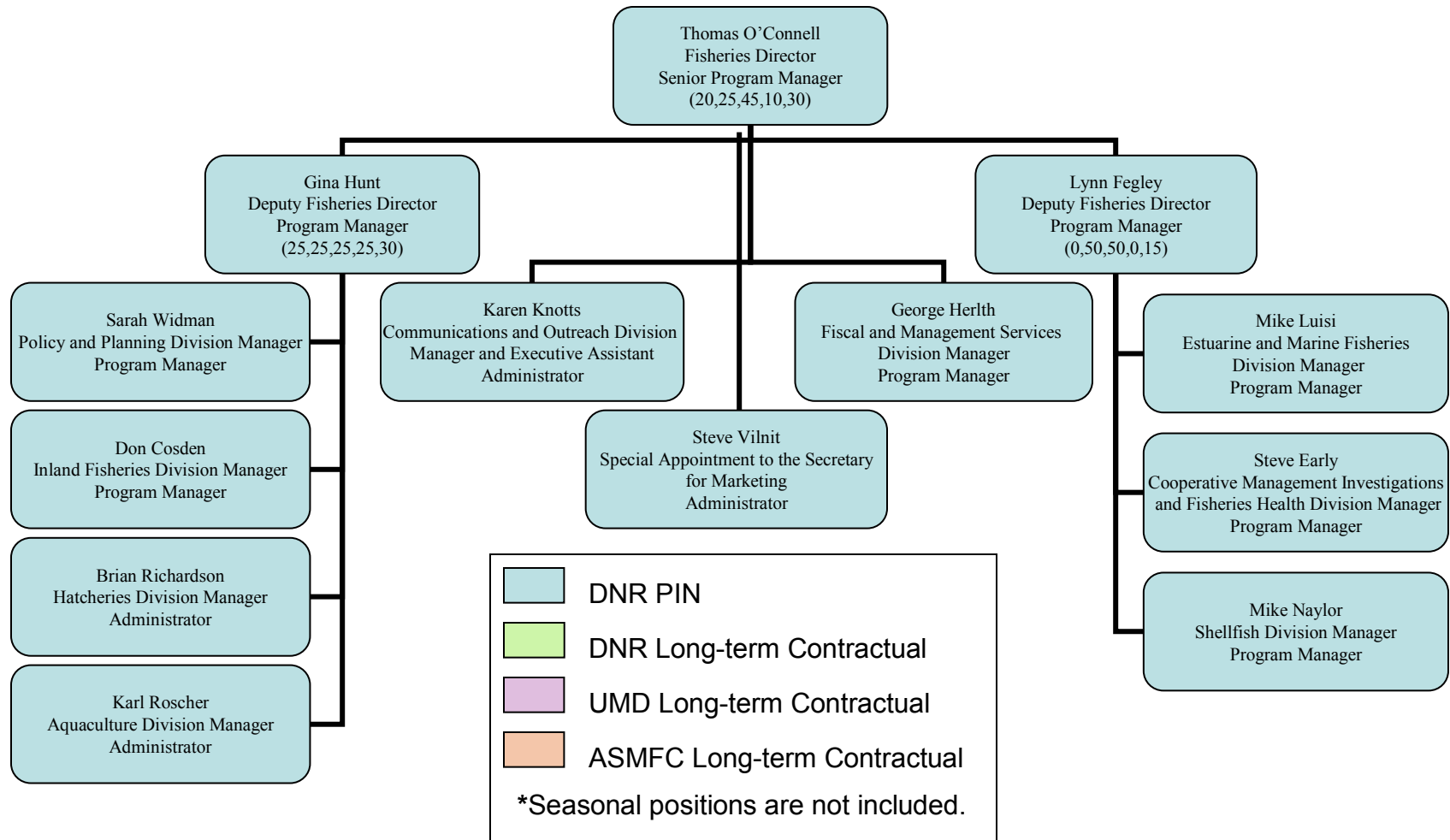
Date 8/14/12



Frank W. Dawson, Assistant Secretary

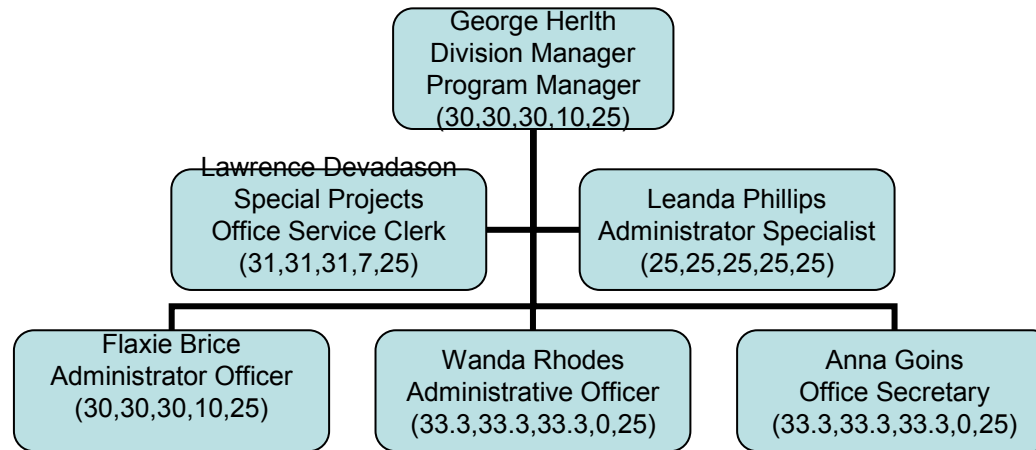
Date 8/14/12

Fisheries Service Management Team



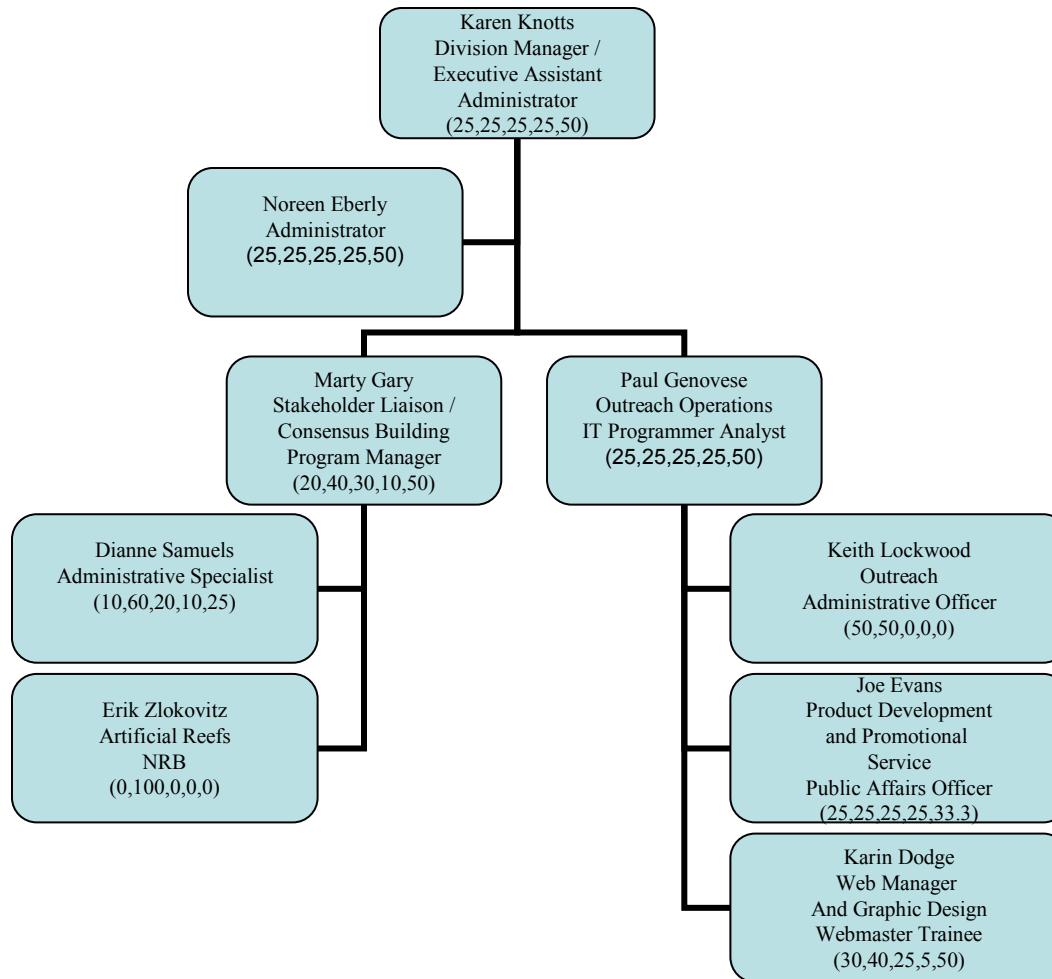
Note: allocation of staff times (%Inland Rec., %Tidal Rec., %Commercial, %Aquaculture, %Community). % for community is taken from the top, and the remaining amount is allocated among the four other sectors.

Fiscal and Management Services Division



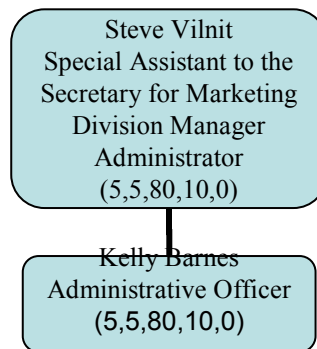
Note: allocation of staff times (%Inland Rec., %Tidal Rec., %Commercial, %Aquaculture, %Community). % for community is taken from the top, and the remaining amount is allocated among the four other sectors.

Communications and Outreach Division



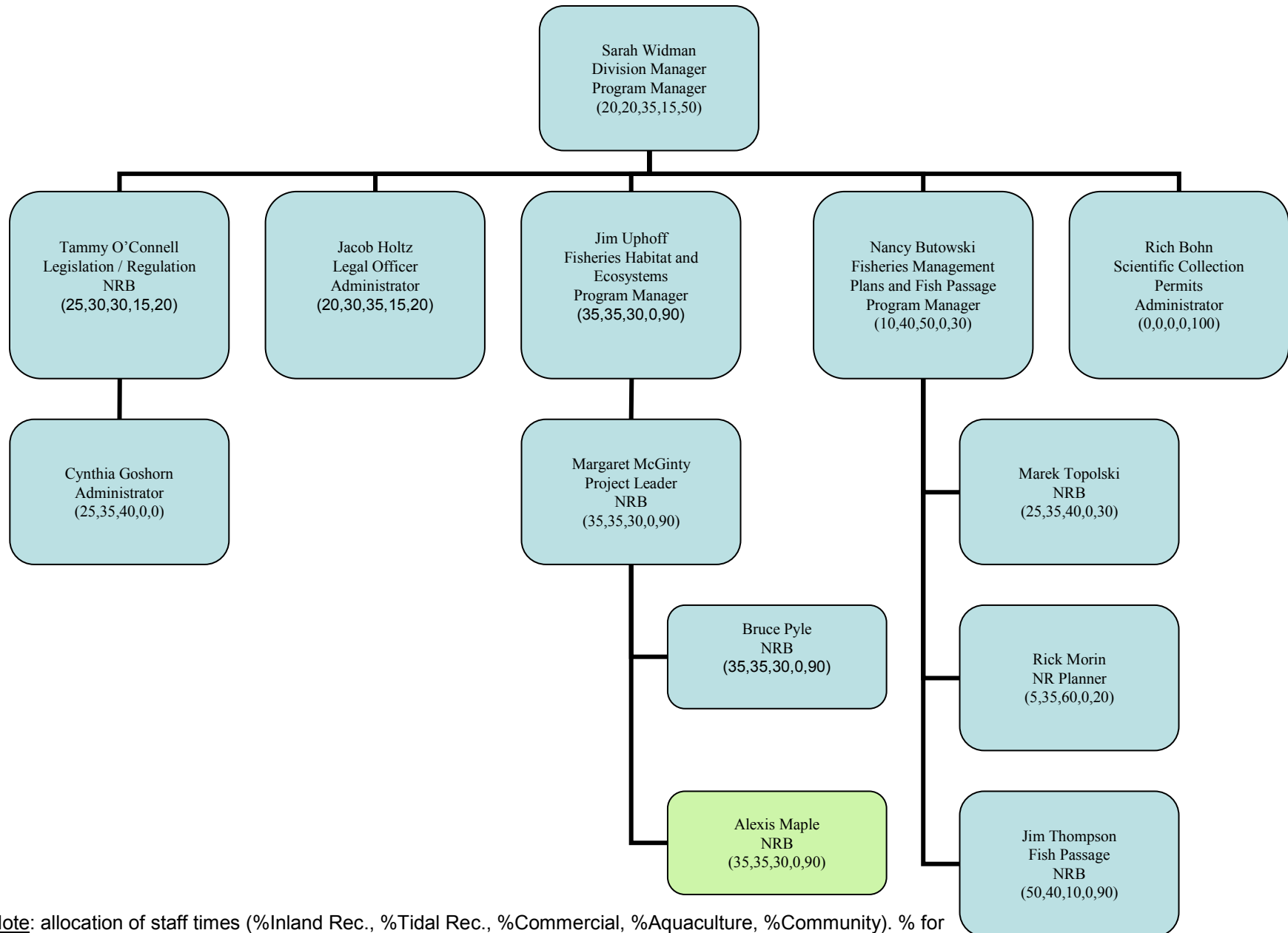
Note: allocation of staff times (%Inland Rec., %Tidal Rec., %Commercial, %Aquaculture, %Community). % for community is taken from the top, and the remaining amount is allocated among the four other sectors.

Fisheries Marketing Division



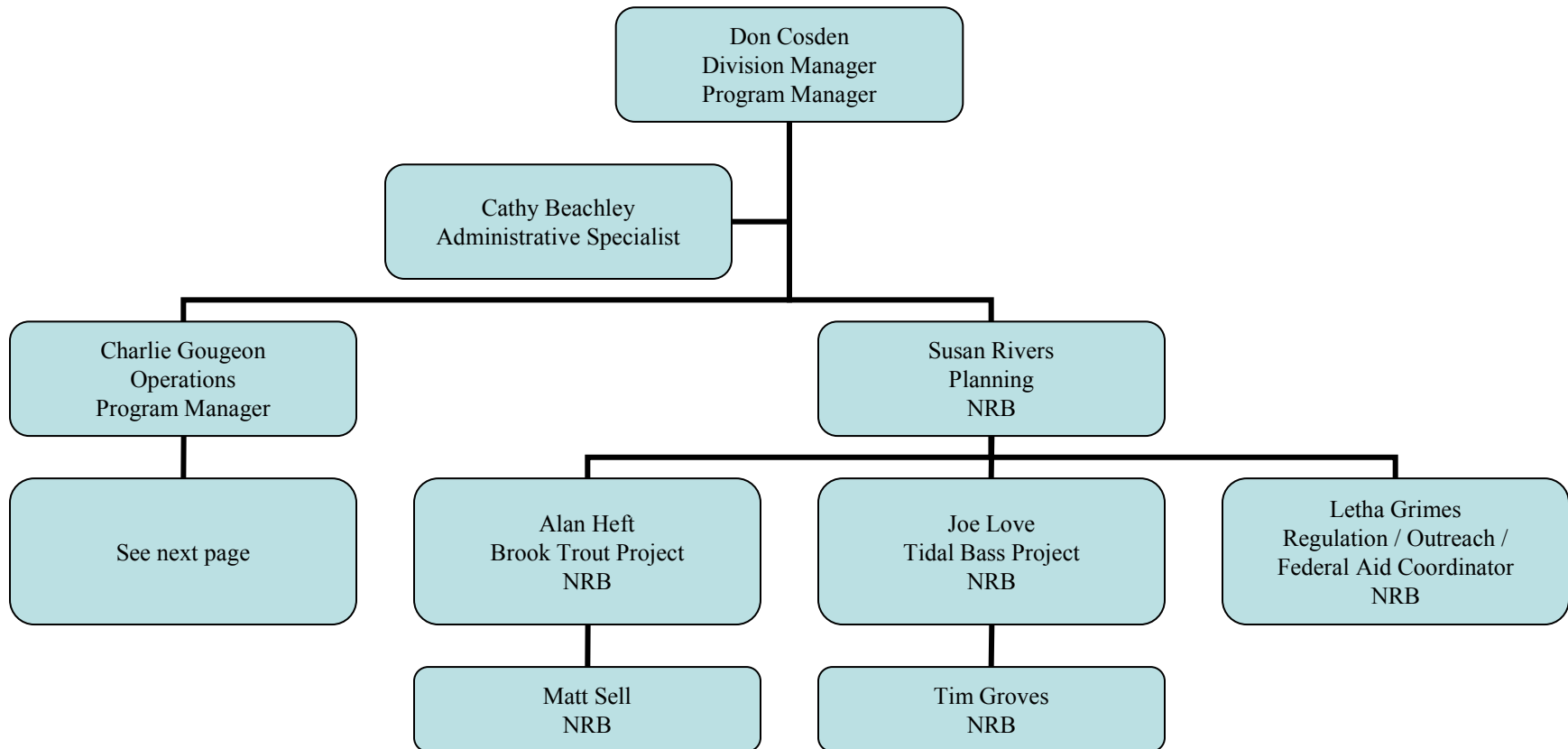
Note: allocation of staff times (%Inland Rec., %Tidal Rec., %Commercial, %Aquaculture, %Community). % for community is taken from the top, and the remaining amount is allocated among the four other sectors.

Policy and Planning Division



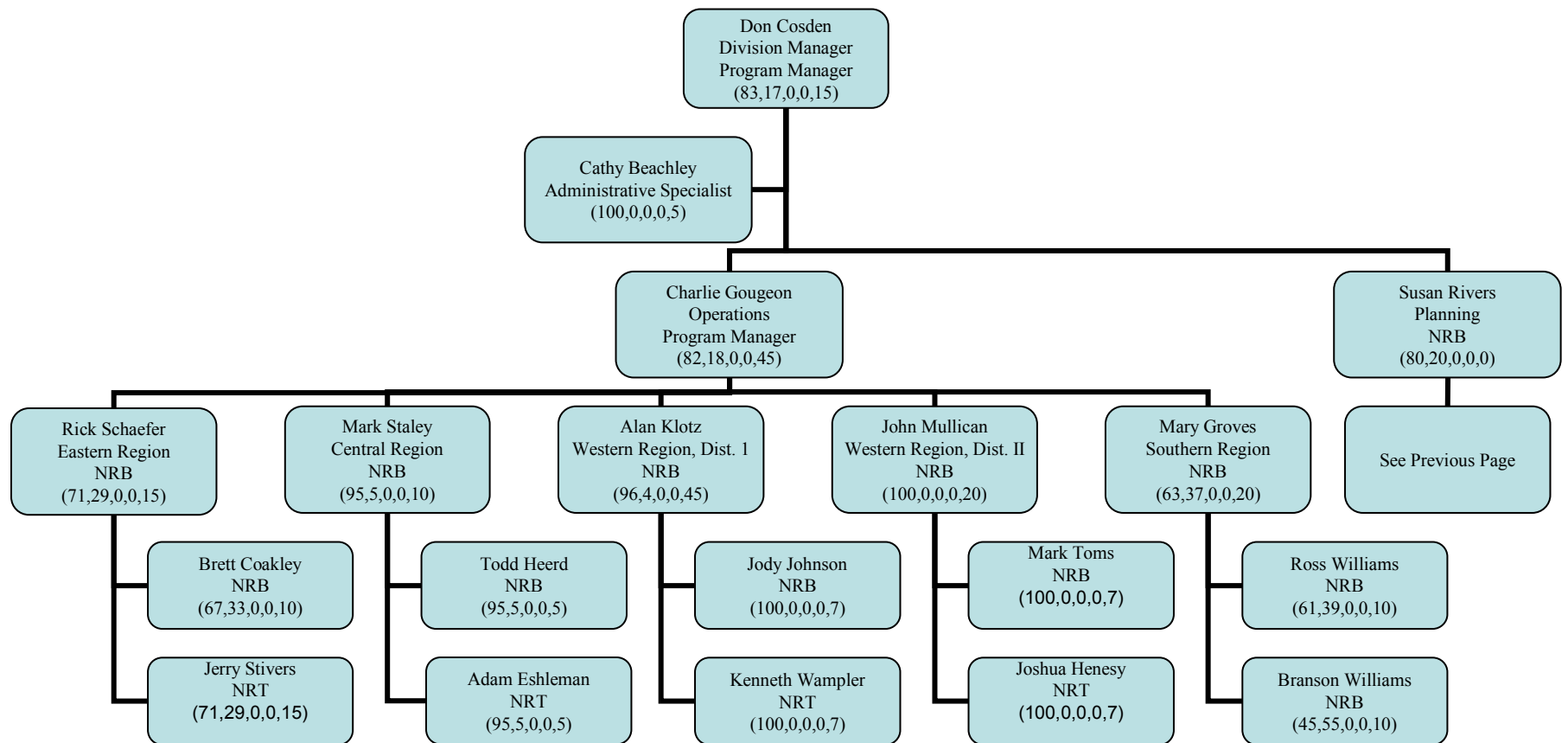
Note: allocation of staff times (%Inland Rec., %Tidal Rec., %Commercial, %Aquaculture, %Community). % for community is taken from the top, and the remaining amount is allocated among the four other sectors.

Inland Fisheries Division



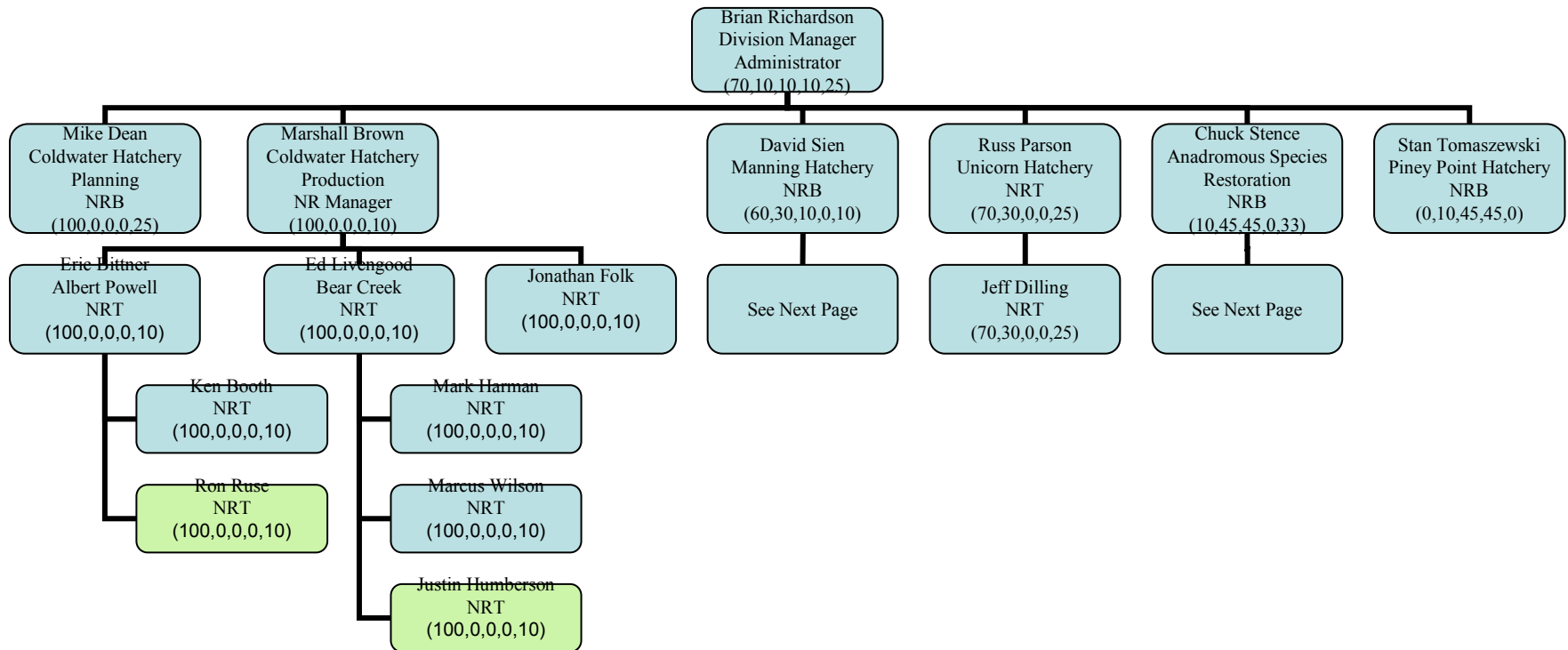
Note: allocation of staff times (%Inland Rec., %Tidal Rec., %Commercial, %Aquaculture, %Community). % for community is taken from the top, and the remaining amount is allocated among the four other sectors.

Inland Fisheries Division (Cont'd)



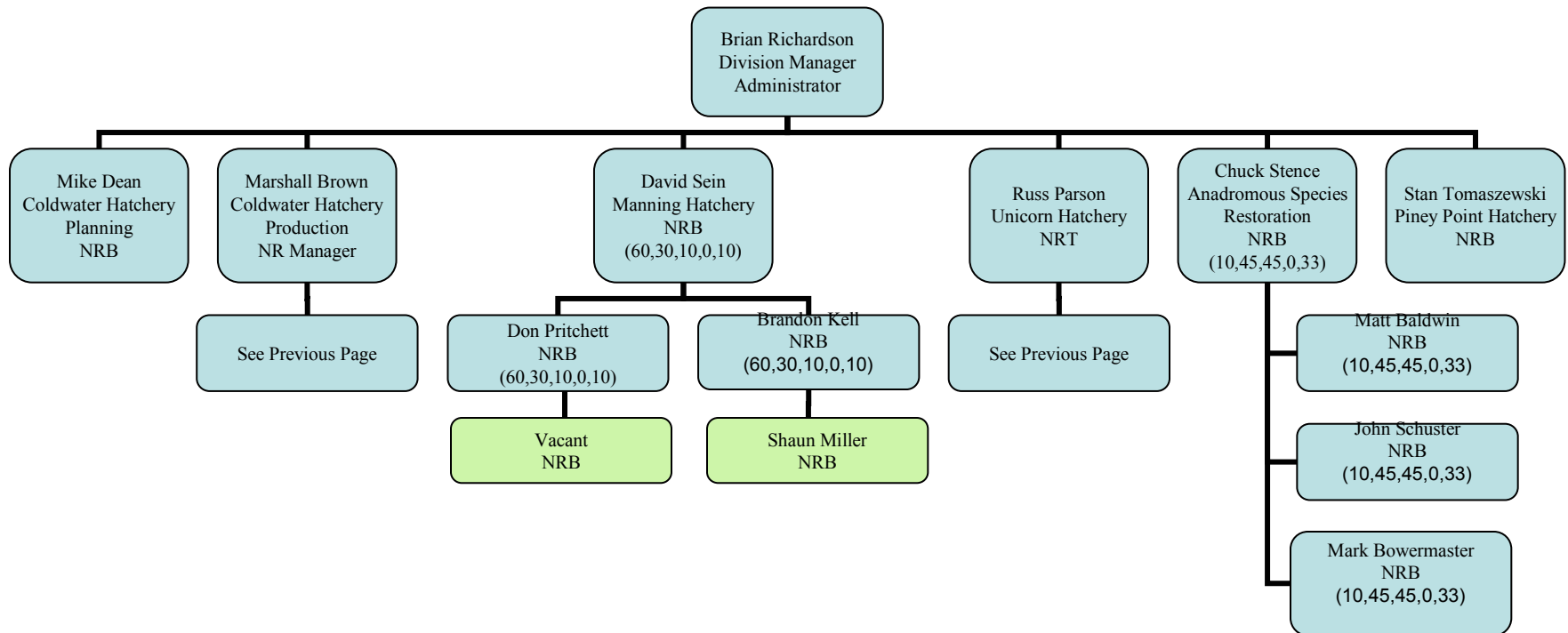
Note: allocation of staff times (%Inland Rec., %Tidal Rec., %Commercial, %Aquaculture, %Community). % for community is taken from the top, and the remaining amount is allocated among the four other sectors.

Hatcheries Division



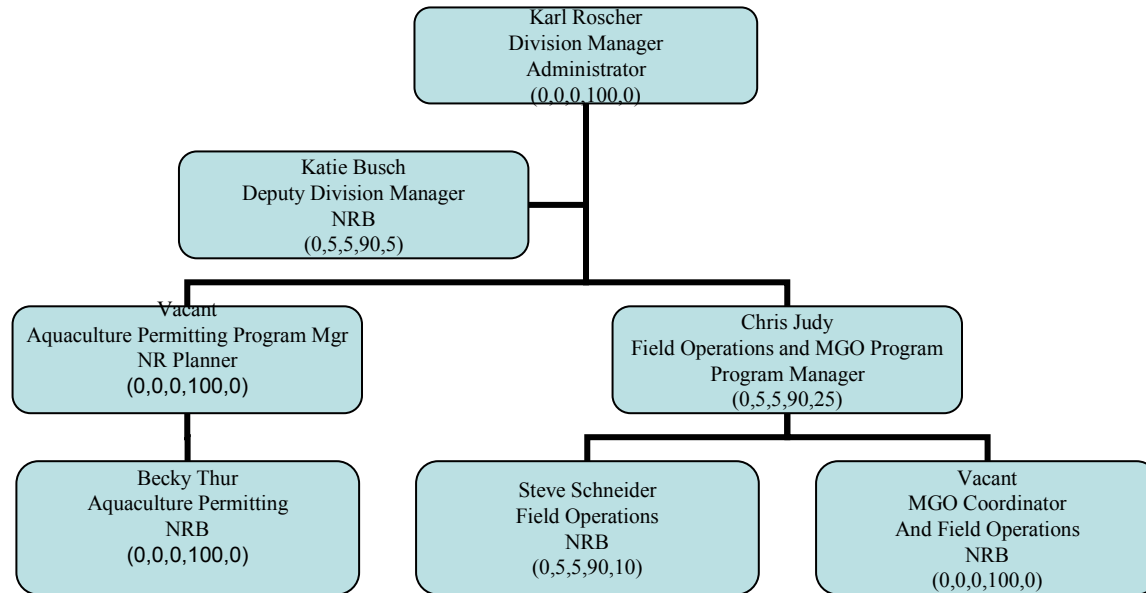
Note: allocation of staff times (%Inland Rec., %Tidal Rec., %Commercial, %Aquaculture, %Community). % for community is taken from the top, and the remaining amount is allocated among the four other sectors.

Hatcheries Division (Cont'd)



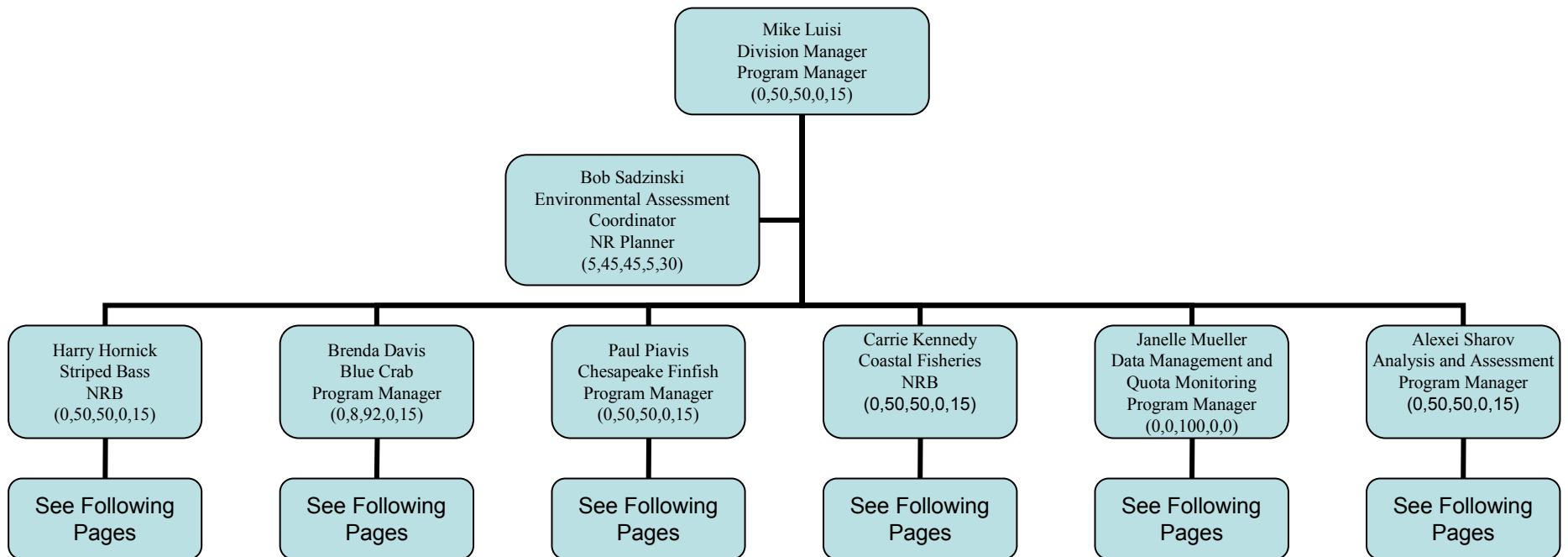
Note: allocation of staff times (%Inland Rec., %Tidal Rec., %Commercial, %Aquaculture, %Community). % for community is taken from the top, and the remaining amount is allocated among the four other sectors.

Aquaculture Division



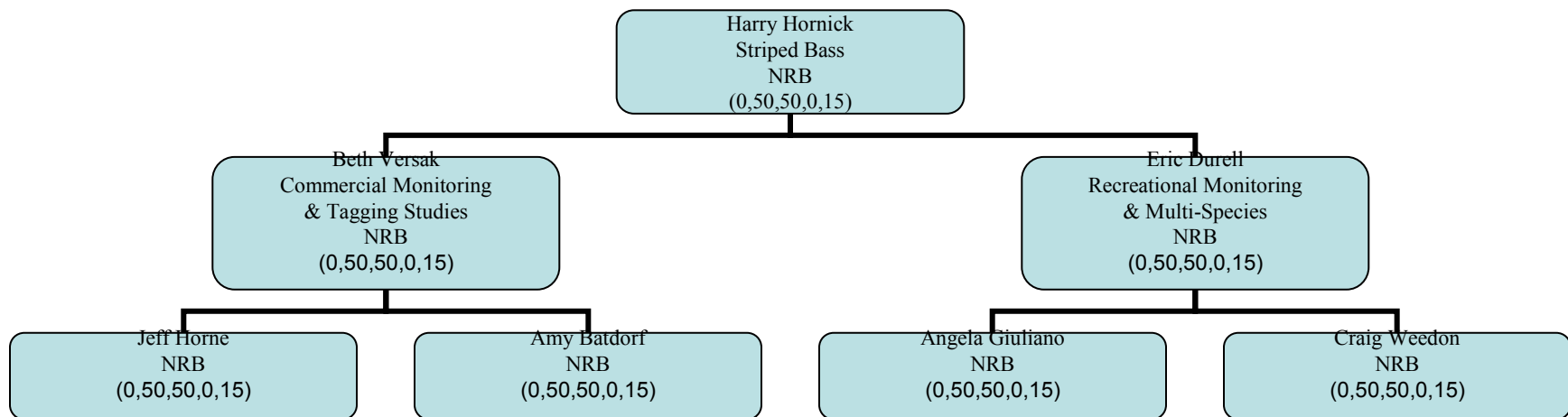
Note: allocation of staff times (%Inland Rec., %Tidal Rec., %Commercial, %Aquaculture, %Community). % for community is taken from the top, and the remaining amount is allocated among the four other sectors.

Estuarine and Marine Fisheries Division



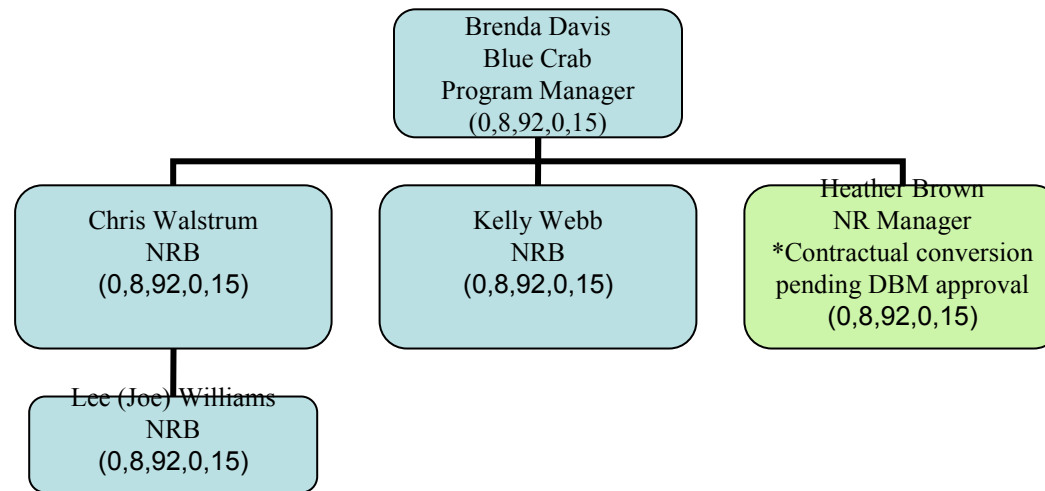
Note: allocation of staff times (%Inland Rec., %Tidal Rec., %Commercial, %Aquaculture, %Community). % for community is taken from the top, and the remaining amount is allocated among the four other sectors.

Estuarine and Marine Fisheries Division Striped Bass Program



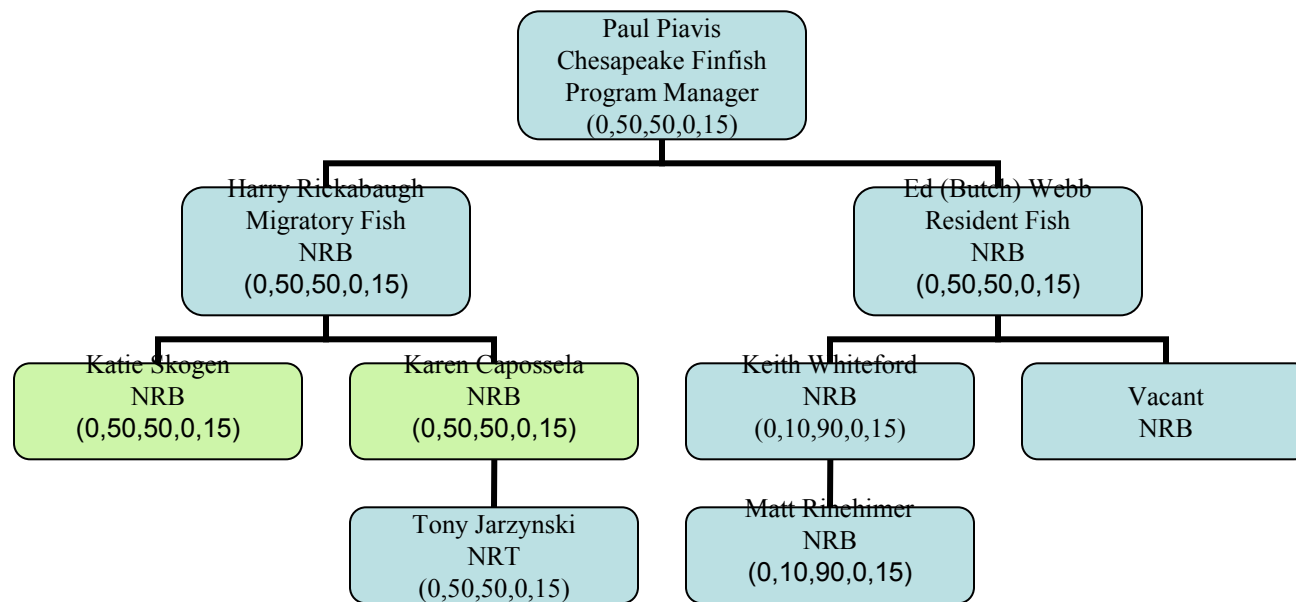
Note: allocation of staff times (%Inland Rec., %Tidal Rec., %Commercial, %Aquaculture, %Community). % for community is taken from the top, and the remaining amount is allocated among the four other sectors.

Estuarine and Marine Fisheries Division Blue Crab Program



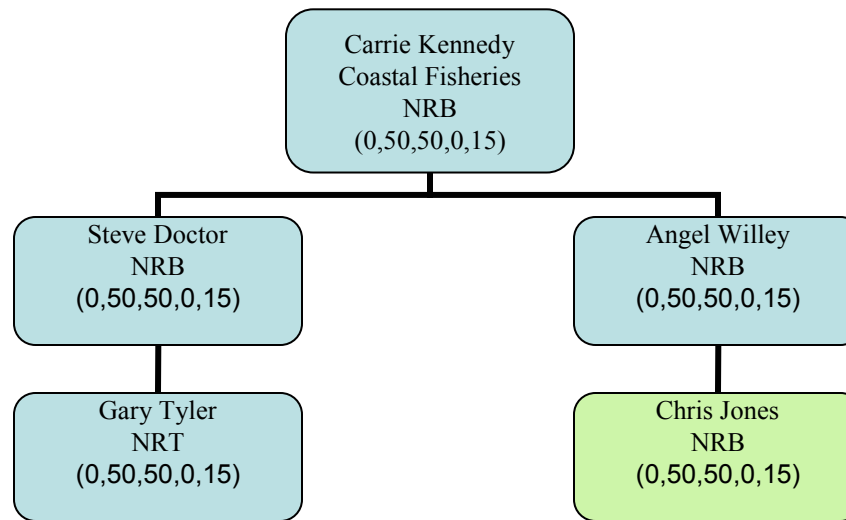
Note: allocation of staff times (%Inland Rec., %Tidal Rec., %Commercial, %Aquaculture, %Community). % for community is taken from the top, and the remaining amount is allocated among the four other sectors.

Estuarine and Marine Fisheries Division Chesapeake Finfish Program



Note: allocation of staff times (%Inland Rec., %Tidal Rec., %Commercial, %Aquaculture, %Community). % for community is taken from the top, and the remaining amount is allocated among the four other sectors.

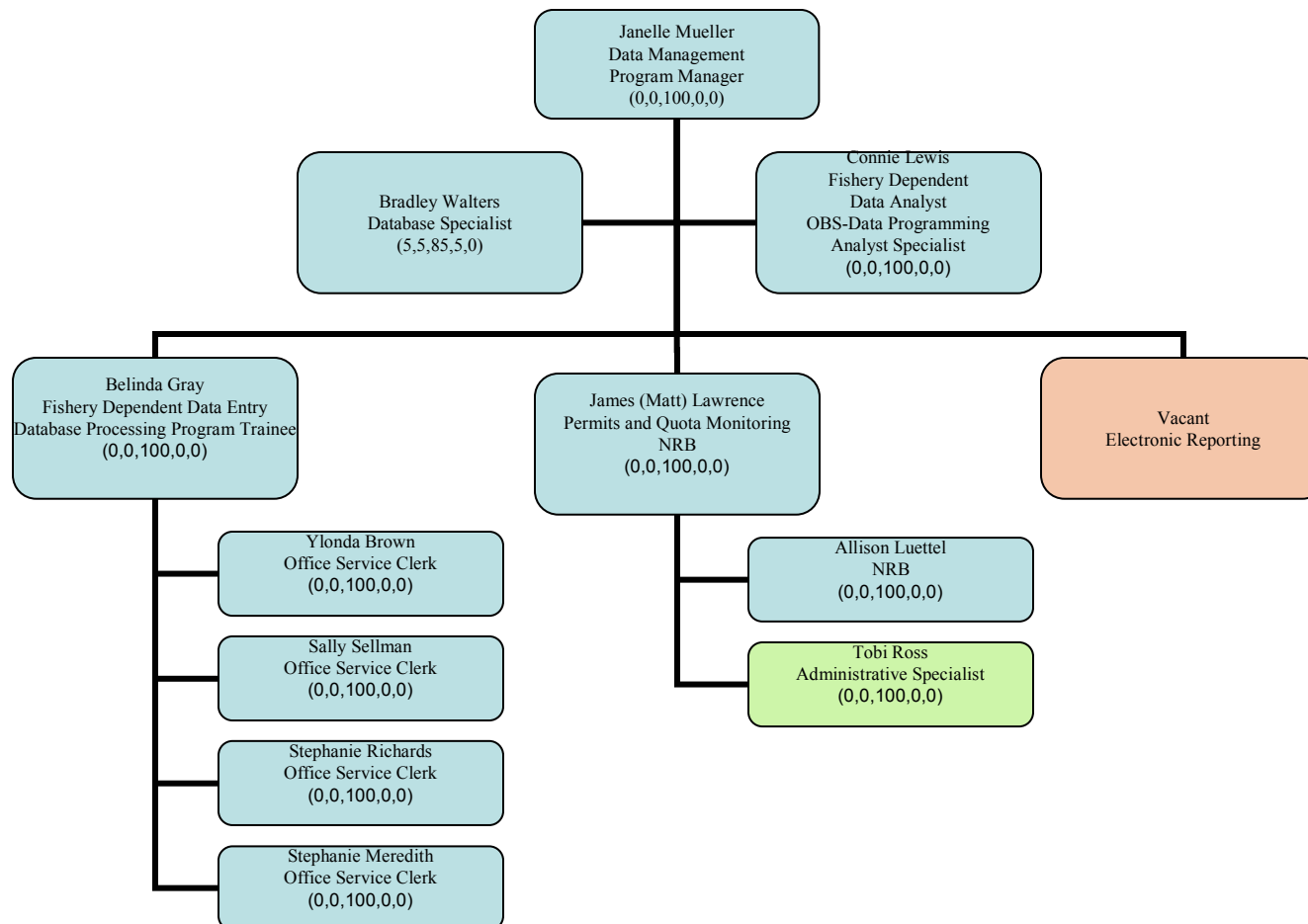
Estuarine and Marine Fisheries Division Coastal Fisheries Program



Note: allocation of staff times (%Inland Rec., %Tidal Rec., %Commercial, %Aquaculture, %Community). % for community is taken from the top, and the remaining amount is allocated among the four other sectors.

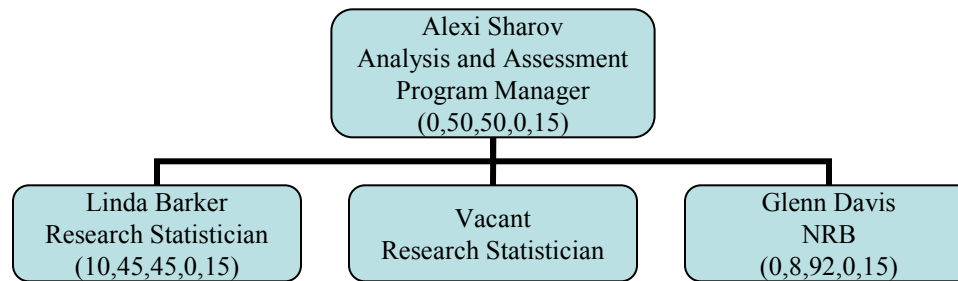
Estuarine and Marine Fisheries Division

Data Management and Quota Monitoring Program



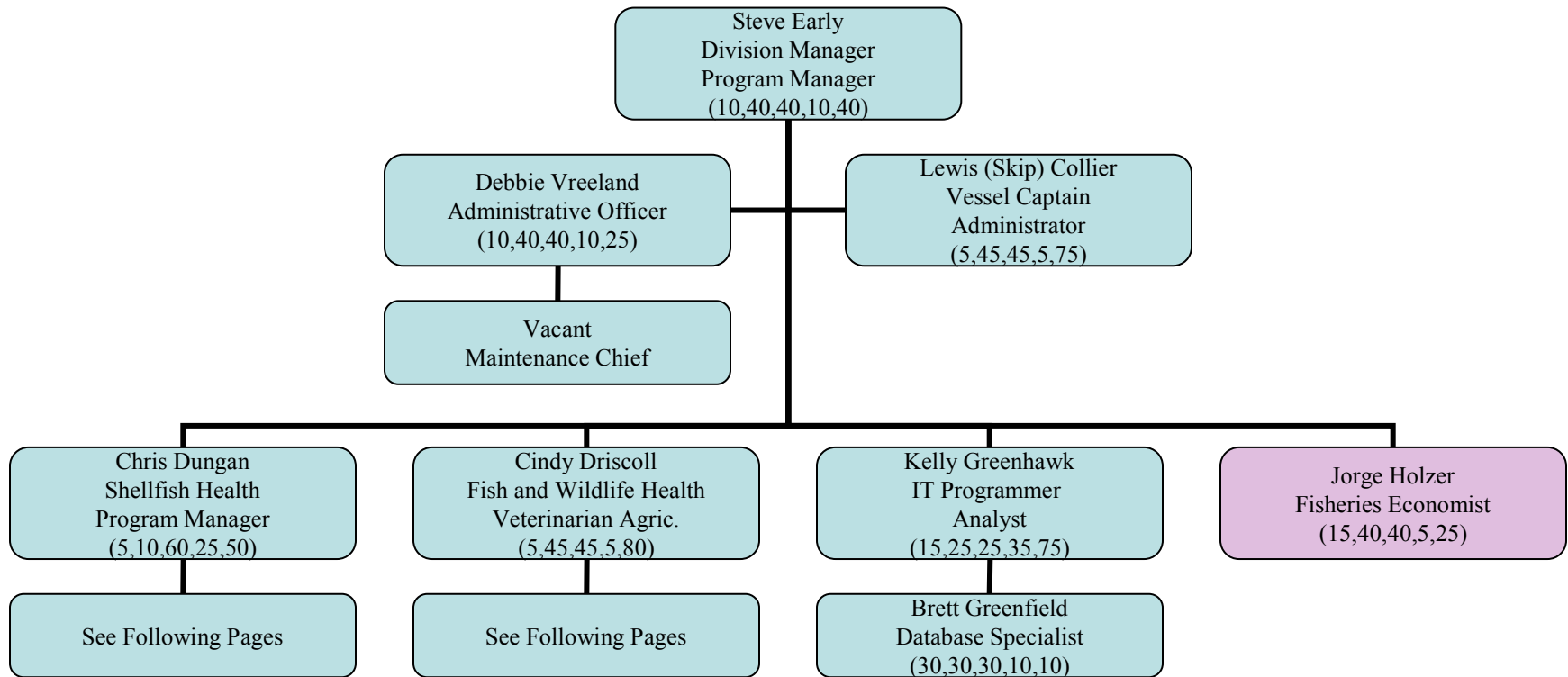
Note: allocation of staff times (%Inland Rec., %Tidal Rec., %Commercial, %Aquaculture, %Community). % for community is taken from the top, and the remaining amount is allocated among the four other sectors.

Estuarine and Marine Fisheries Division Analysis and Assessment Program



Note: allocation of staff times (%Inland Rec., %Tidal Rec., %Commercial, %Aquaculture, %Community). % for community is taken from the top, and the remaining amount is allocated among the four other sectors.

Cooperative Management Investigations & Fisheries Health Division

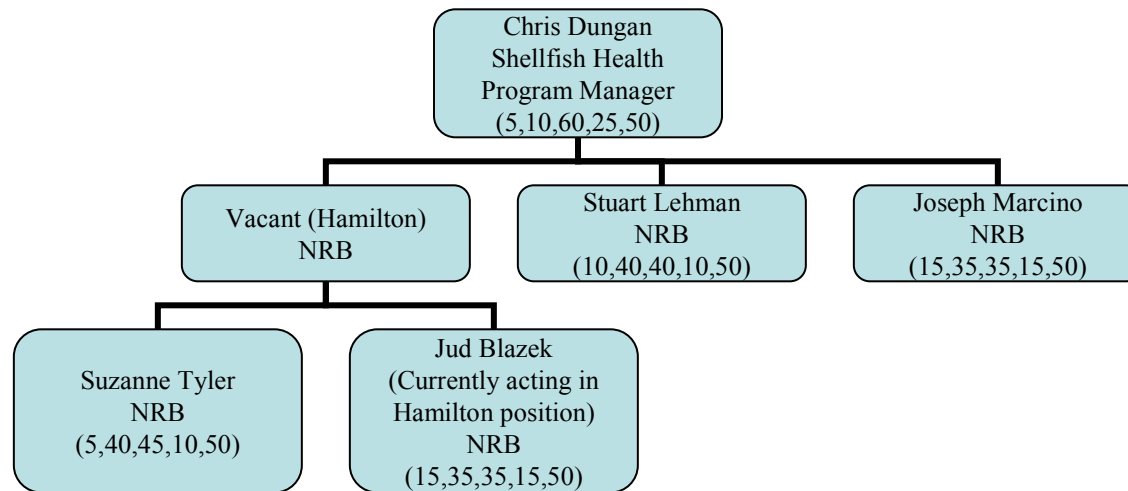


Note: allocation of staff times (%Inland Rec., %Tidal Rec., %Commercial, %Aquaculture, %Community). % for community is taken from the top, and the remaining amount is allocated among the four other sectors.

Cooperative Management

Investigations & Fisheries Health Division

(cont'd) Shellfish Disease Program

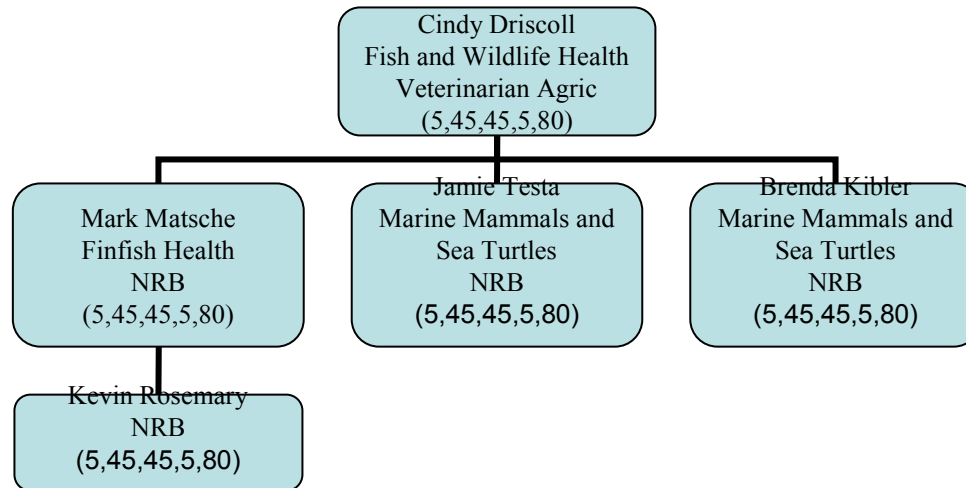


Note: allocation of staff times (%Inland Rec., %Tidal Rec., %Commercial, %Aquaculture, %Community). % for community is taken from the top, and the remaining amount is allocated among the four other sectors.

Cooperative Management

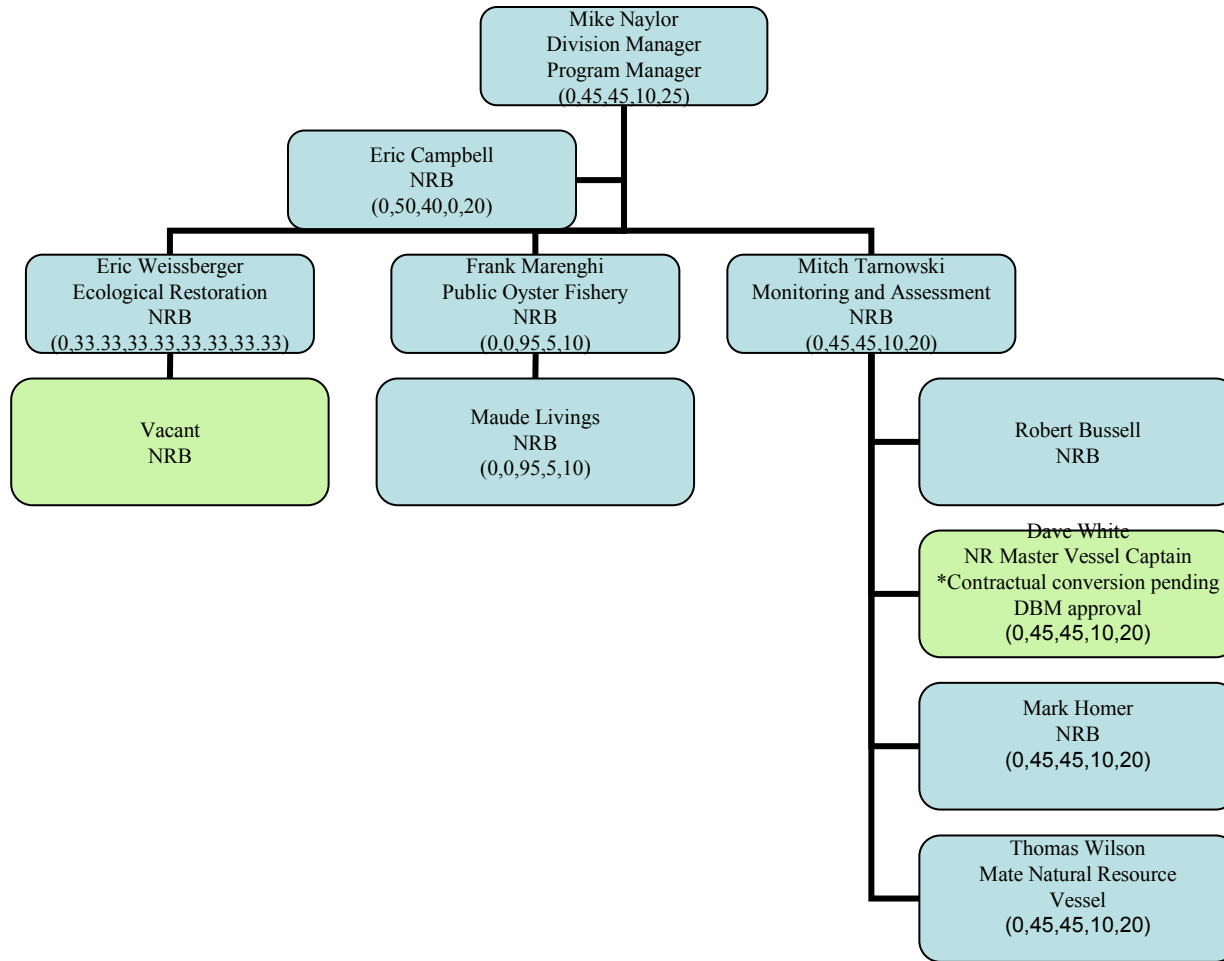
Investigations & Fisheries Health Division

(cont'd) Fish and Wildlife Health Program



Note: allocation of staff times (%Inland Rec., %Tidal Rec., %Commercial, %Aquaculture, %Community). % for community is taken from the top, and the remaining amount is allocated among the four other sectors.

Shellfish Division



Note: allocation of staff times (%Inland Rec., %Tidal Rec., %Commercial, %Aquaculture, %Community). % for community is taken from the top, and the remaining amount is allocated among the four other sectors.