

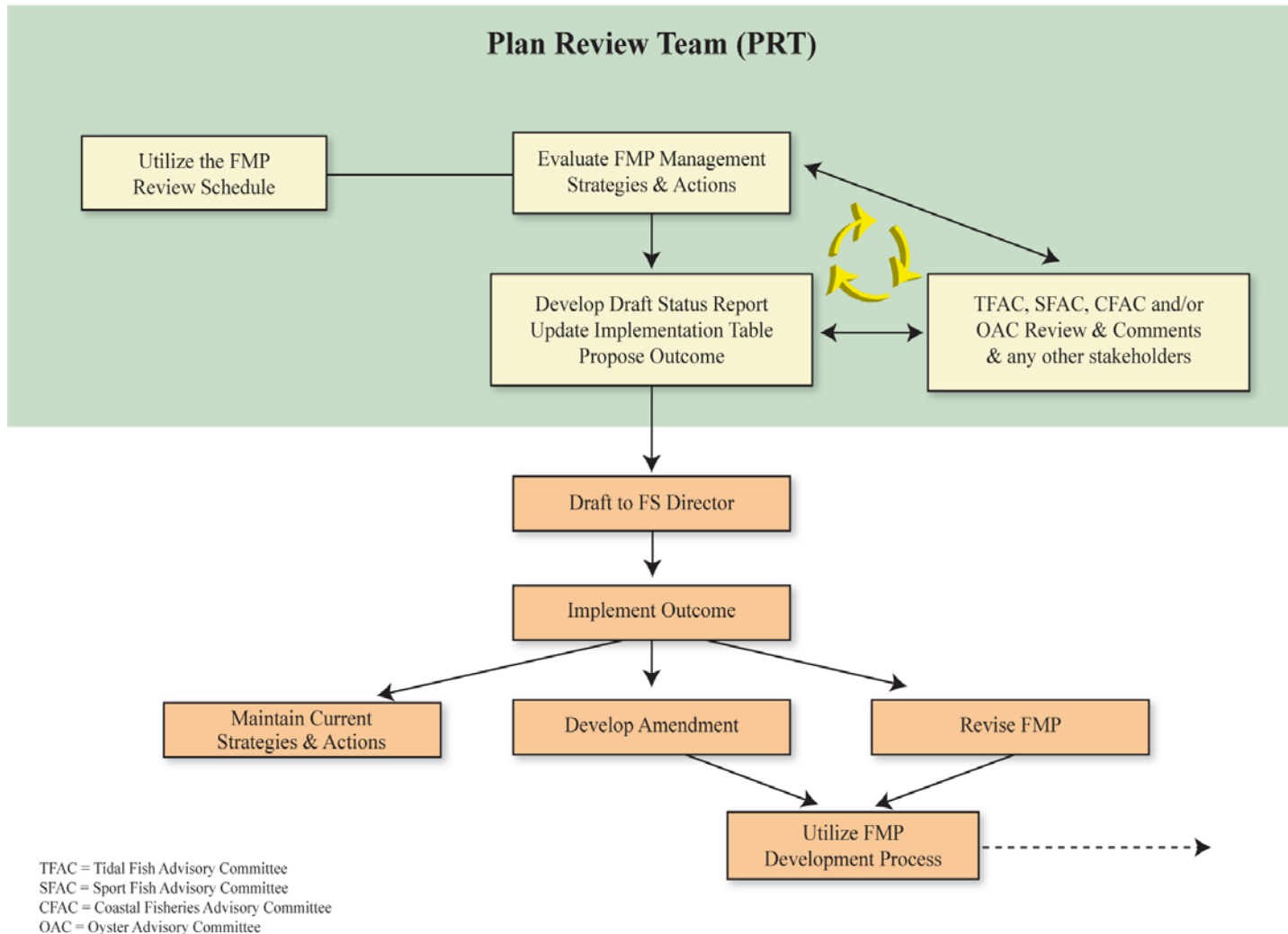


Presented to Maryland Sport Fisheries Advisory Commission

7-23-2013

by Rick Morin rmorin@dnr.state.md.us 410-260-8272

Fishery Management Plan (FMP) Review Process



2013 FMP Review Schedule

| Species | Draft Review Date | Request for Allocation Materials Date |
|---------------------------------|-------------------------|---------------------------------------|
| Menhaden | Reschedule 2015/2016 | TBD |
| Oysters | Reschedule 2014 | TBD |
| Weakfish/Spotted Seatrout | May 2013 | March 1, 2013 |
| American Shad/ River Herring | May 2013 | March 1, 2013 |
| Striped Bass | July/Oct 2013 | April 1, 2013 |
| Yellow Perch | July 2013 | May 1, 2013 |
| Blue Crabs | October 2013 | August 1, 2013 |
| Brook Trout | October 2013 | August 1, 2013 |

Maryland Tidewater Yellow Perch Fishery Management Plan History

- 2000-2002: Fishery Management Plan (FMP) developed and written by Yellow Perch Fishery Management Planning Team
- 2002: Yellow Perch FMP adopted
- 2003-2006 FMP updated
- 2007: Maryland Senate Bill 702 directed DNR to manage yellow perch in consultation with stakeholders
- 2008: Stakeholder meetings led to management recommendations
- 2009: New yellow perch management strategies
- 2009-2013: FMP updated annually
- 2013: Yellow Perch FMP Review

Current Management Targets

F target = F35% ; F limit = F25% (Control Fishing Mortality Strategy)

New Integrated Analysis analytical models have better defined the BRPs and calculate a Total Allowable Catch annually

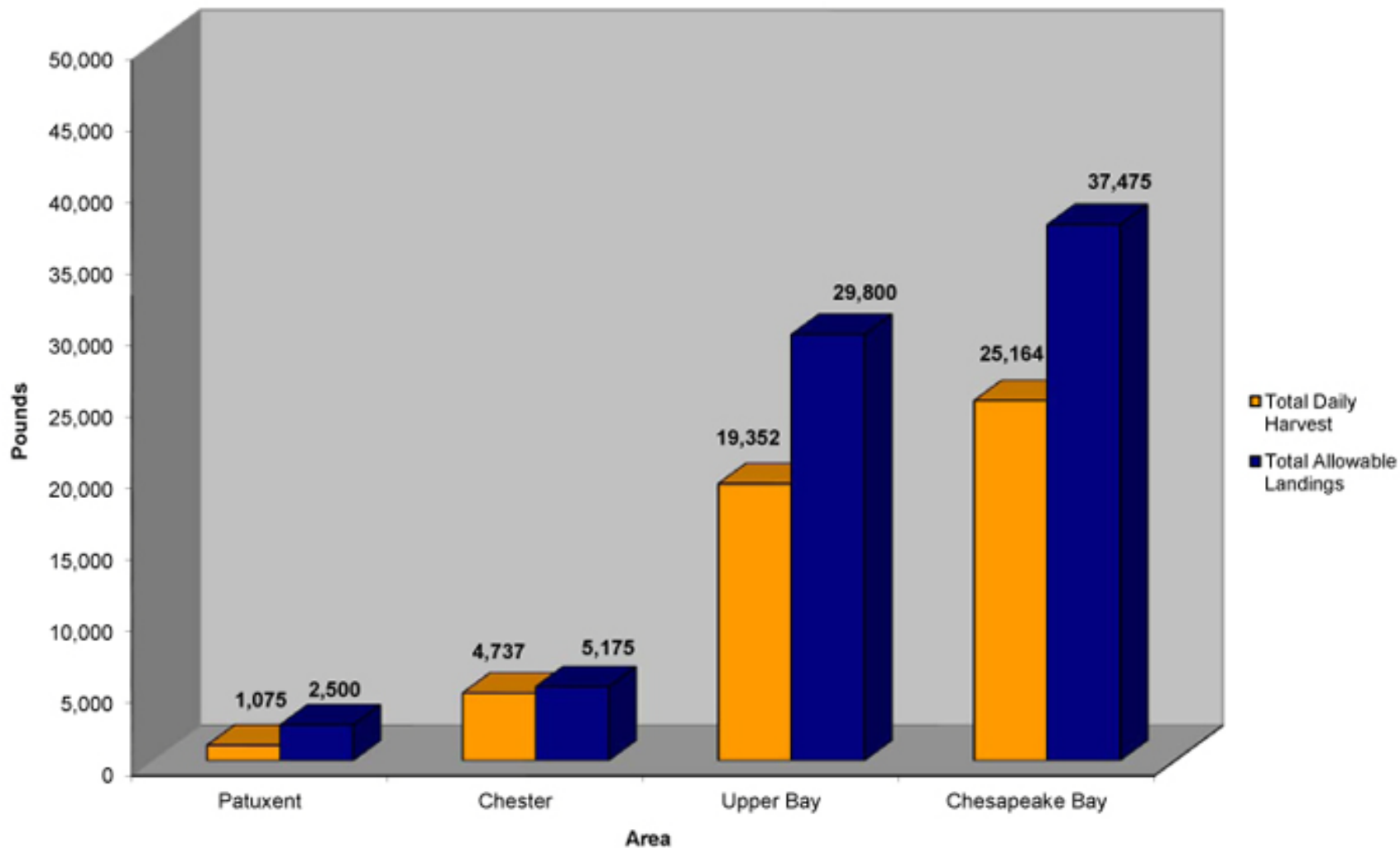
Commercial Fishery Total Allowable Catch (TAC)

- Any overage decreases new TAC in following year
- 3 Management Units: Upper Bay, Chester R, Patuxent R
- net line restrictions
- size slot limit

Recreational Fishery

- No closed river systems (2 local Anne Arundel areas remain closed by statute)
- bag limit of 10 fish encourages recreational effort

2013 Commercial Yellow Perch Harvest through March 16, 2013



Tidewater Yellow Perch Commercial Harvest as a % of TAC for Chesapeake Bay and management regions

| Report Year | Chesapeake Bay Total | Upper Bay | Chester River | Patuxent River |
|-------------|----------------------|-----------|---------------|----------------|
| 2009 | 104.8% | 115.5% | 65.3% | 46.6% |
| 2010 | 119.1% | 124.2% | 112.2% | 58.2% |
| 2011 | 89.9% | 100.1% | 44.9% | 66.5% |
| 2012 | 91.2% | 95.5% | 81.5% | 51.5% |
| 2013 | 67.1% | 64.9% | 91.5% | 43.0% |
| 5 Year Avg | 95.9% | 101.8% | 79.1% | 53.2% |

Status of the Stocks

- Stock assessments are conducted every year.
- Yellow Perch stocks are not overfished and overfishing is not occurring.
- Tidewater Yellow Perch stocks exhibit high variability due to variable recruitment.
- Upper Bay population is estimated at 632 thousand yellow perch.
- Recruitment from 2010 to 2012 declined due to poor year-classes in 2008 and 2009.
- Reproduction is an ongoing problem in some watersheds and is not improving in those areas.

Status of the Fishery

TAC has not been reached for last 3 years.

Commercial yellow perch fishing season was extended in 2013 for the first time.

Recreational yellow perch fishing quality has declined in the last two years, following the trend of the commercial harvest.

Compliance with FMP

- High accountability in commercial fishery – daily reporting, tagging.
- TAC balance is calculated daily during season and season is closed when TAC is projected.

Issues of Concern Identified by FS Plan Review Team

- Watershed Habitat issues – Land Conservation should be primary management tool for tidewater yellow perch
- Species interactions – Invasive species a concern
- Climate Change
- Zooplankton monitoring

FS Plan Review Team Recommendations

Amendment to the 2002 Tidal Yellow Perch Fishery Management Plan

This Amendment should address:

- ecosystem-based management
- stock assessment
- new fishing mortality strategies and actions currently in place
- need for continued monitoring and resumption of zooplankton monitoring
- climate change vulnerability discussion

