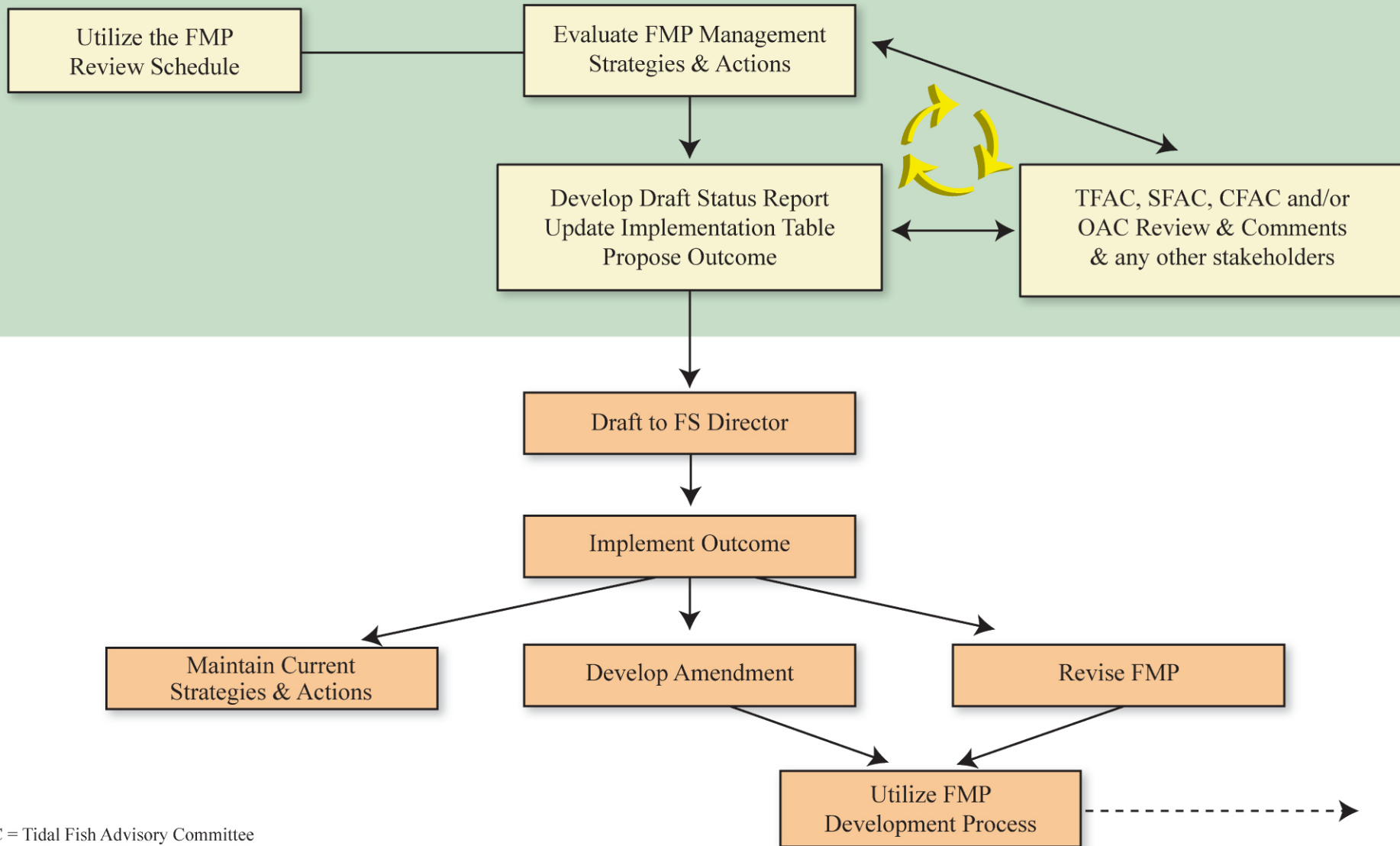


**Tidal Fisheries Advisory
Commission Meeting
October 2013**

Fishery Management Plan (FMP) Review Process

Plan Review Team (PRT)



TFAC = Tidal Fish Advisory Committee
SFAC = Sport Fish Advisory Committee
CFAC = Coastal Fisheries Advisory Committee

2013/2014 FMP Review Schedule

Species	Draft Review Date	Request for Allocation Materials Date
Menhaden	Reschedule 2015/2016	TBD
Oysters	Reschedule 2014	TBD
Weakfish/Spotted Seatrout	√May 2013	March 1, 2013
American Shad/ River Herring	√May 2013	March 1, 2013
Yellow Perch	√July 2013	April 1, 2013
Striped Bass	October2013	May 1, 2013
Blue Crabs	Rescheduled February 2014	November 1,2013
Brook Trout	Rescheduled February 2014	November 1,2013

Striped Bass FMP

- Chesapeake Bay Plan developed in 1989
- Amended in 1998 (adopted ASMFC Amendment 5)
- Reviewed
 - 1991-1995
 - 2000, 2001, 2005, 2010
- Updated annually – 2007 - present

Current Management

ASMFC Amendment 6 (2003)

- Defines biological reference points
(Targets & Thresholds)
 - Fishing Mortality (F)
 - Female Spawning Stock Biomass (SSB)
- * Implements a separate management program for CB with a lower (F)
- **BRPs will vary over time due to changes in the fishery and stock

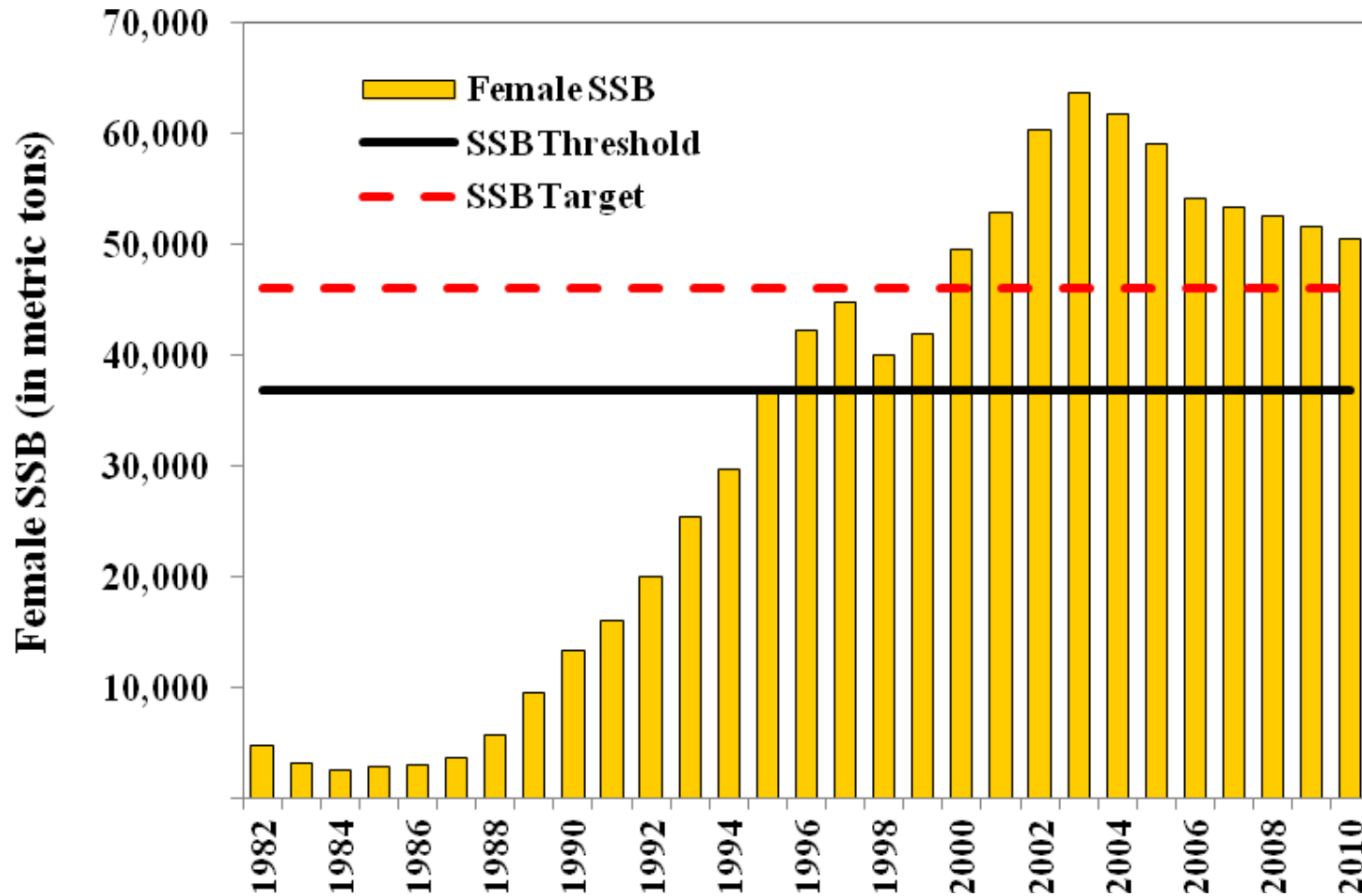
“Pending” ASMFC Management

Reference Point	ASMFC 2008 Value	ASMFC 2013 Value
F Threshold	0.34	0.213
F Target	0.30	0.175
SSB Threshold	36,000 mt	57,904 mt
SSB Target	46,101 mt	72,380 mt

Status of the Stock

- Overfishing is not occurring and the stock is not overfished (2012)
- Atlantic Coast
 - Female spawning stock biomass (SSB) = 61,500 mt
 - Fishing mortality (F) = 0.188

Striped bass spawning stock biomass (SSB) estimates and biological reference points (Source: ASMFC 2011)



Status of the Fishery

- Commercial coastal landings (ME-NC, 1995-2011)
 - 3.39 (1995) to 7.32 million lbs (2004)
 - 6.5 million lbs (2012)
- Maryland commercial fishery –
 - 1.77 to 2.41 million lbs (2000-2012)
 - 1.84 million lbs (2012)
 - 93.7% - 105.3% of the quota reached

Status of Fishery (cont'd)

- Recreational estimated coastal harvest
(1990-2011)
 - 2.23 million lbs (1990) to 29.25 million lbs (2006)
 - 19.0 million lbs (2012)
- Maryland estimated recreational harvest –
(1990-2012)
 - 13,000 lbs (1990) to 4.57 million lbs (2005)
 - 1.06 million lbs (2012)

CBFMP Management

- Follow ASMFC requirements
- Commercial quota
- Recreational harvest limits
- Adult monitoring (spring trophy season creel, spring spawning stock survey, tagging program, commercial check stations, commercial pound net, internet volunteer angler survey)
- Juvenile monitoring

Stakeholder Input

- Requested a shift in allocation to 10% commercial and 90% recreational
- Based on changing social patterns & values
- Based on decreasing economic viability of commercial fisheries

Fisheries Service Plan Review Team (FSPRT) Conclusions

- CB Striped Bass FMP/Amendment #1 do not reflect the current management framework
- ASMFC control rules (fishing mortality, spawning stock biomass, and juvenile abundance) are sufficient for managing striped bass within Chesapeake Bay

FS PRT Conclusions (cont'd)

- Ecosystem-based indices have not been integrated into the fisheries management process
- 2013 ASMFC stock assessment projections indicate a decline in SSB over the next few years

FS PRT Conclusions (cont'd)

- Number of angler trips in Maryland state waters & number of anglers has varied over time but the variation does not represent a fundamental change
- Economic value of one sector over the other would require cost-benefit analysis which has not been determined

FS PRT Conclusions (cont'd)

- There is a market demand for striped bass by the restaurant and seafood industry, however, there are fluctuations in supply (under and over) that affect market price.

FS PRT Draft Recommendations

- Develop a new striped bass amendment
 - Management changes have occurred
 - Flexibility is needed in the CBSB FMP to address changing stock conditions & reference points.
 - Ecosystem-based indices should be explored & incorporated into decision making

FS PRT Draft Recommendations (cont'd)

- Maintain the current striped bass allocation for commercial (42.5%) and recreational and charter boat combined (57.5%)
 - social patterns & values have not diminished for commercial fishing or increased for recreational angling
 - Commercial and recreational fisheries economic value analyses are not available

Questions
Or
Comments



Current Management

ASMFC Amendment 6 (2003) –

- Defines biological reference points
- Fishing Mortality–
 - Coastal target = 0.30 (exploitation rate = 24%)
 - Chesapeake Bay target = 0.27
 - Threshold = 0.41

Biological Reference Points (cont'd)

- Female Spawning Stock Biomass –
 - Target = 37,500 mt or 38.6 million lbs
 - Threshold = 30,000 mt or 30.9 million lbs