

~Striped Bass Benchmark Stock Assessment ~

Summary Report

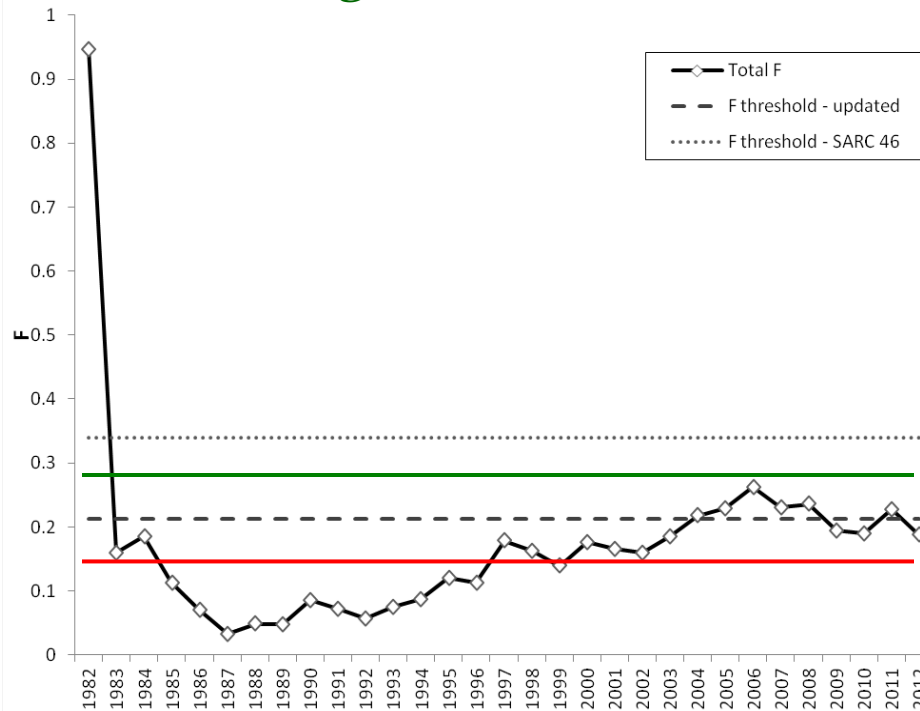


Tidal Fish Advisory Commission
October 3, 2013

~Status of the Stock~

Relative to the new Biological Reference Points (BRPs)

- *In 2012:*
 - *Fishing Mortality (F) estimated @ 0.188*
 - *Between the Target (0.175) and Threshold (0.213)*



~Not Overfishing~

Current Threshold - F_{MSY}

Current Target – 24% Exploitation

Updated Threshold – To Obtain $SSB_{threshold}$

Updated Target – To Obtain SSB_{target}

~ Female Spawning Stock Biomass ~

Relative to the new Biological Reference Points (BRPs)

- *Updated in 2012:*
 - *Spawning Stock Biomass (SSB) estimated @ 61,544 mt*
 - *Between the Target (72,380 mt) and Threshold (57,904 mt)*

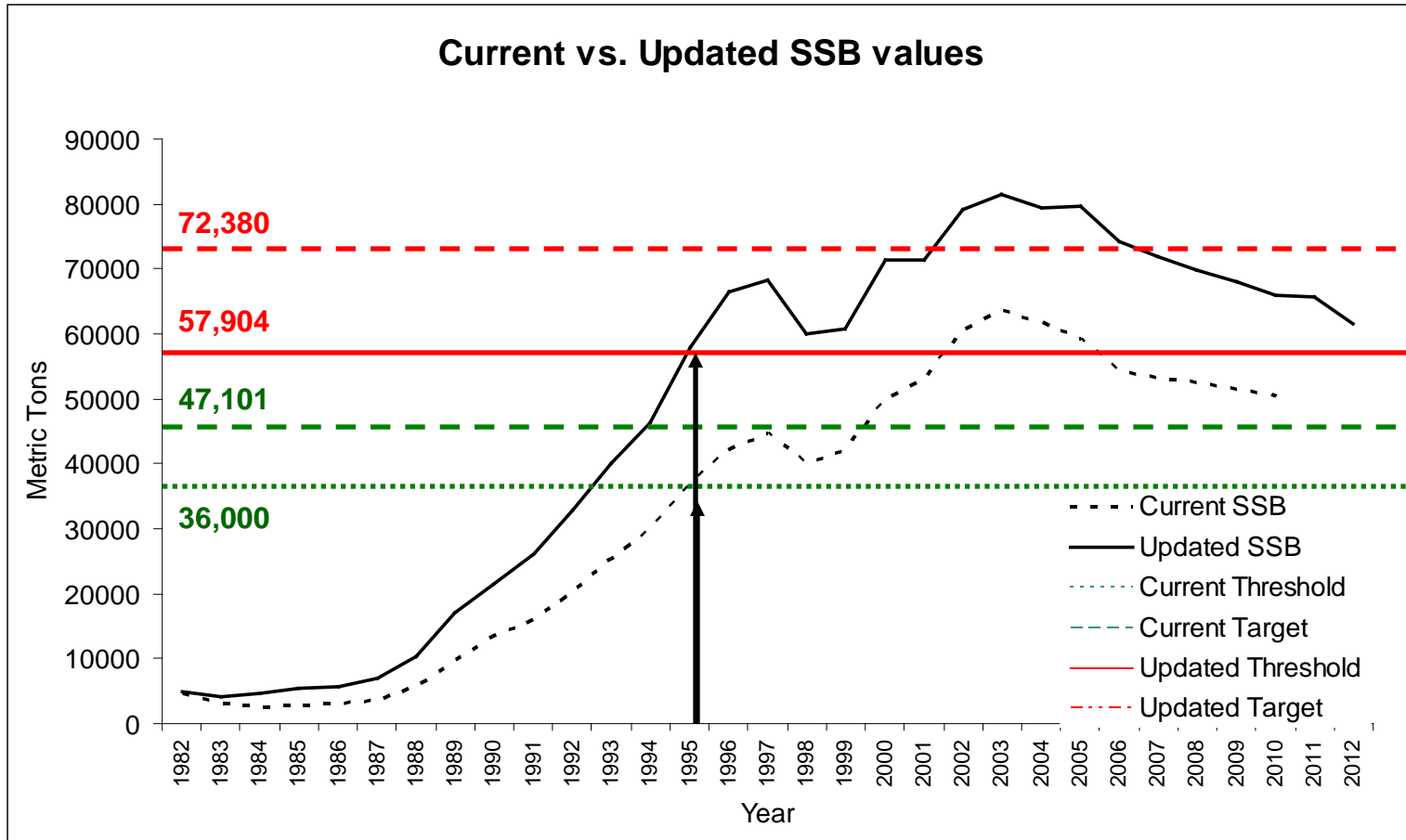


~Not Overfished~

- *A new SSB time series resulted from the new assessment:*
 - *Estimates of Total Biomass are larger in this assessment*
 - *New data - Natural Mortality is higher on younger year-classes*

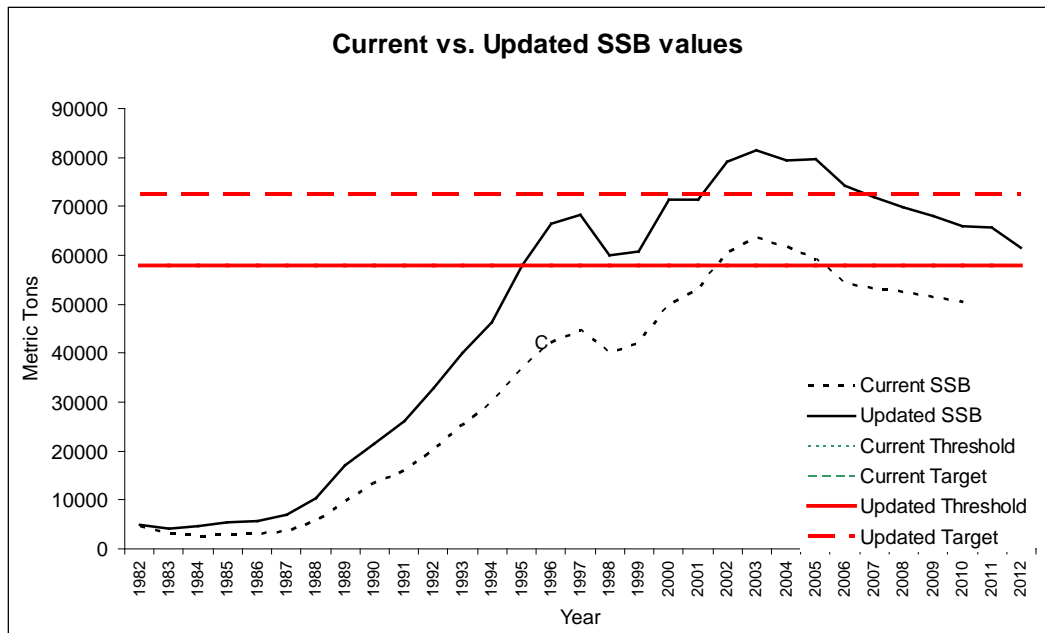
Lets Look at this Graphically

~Female Spawning Stock Biomass ~



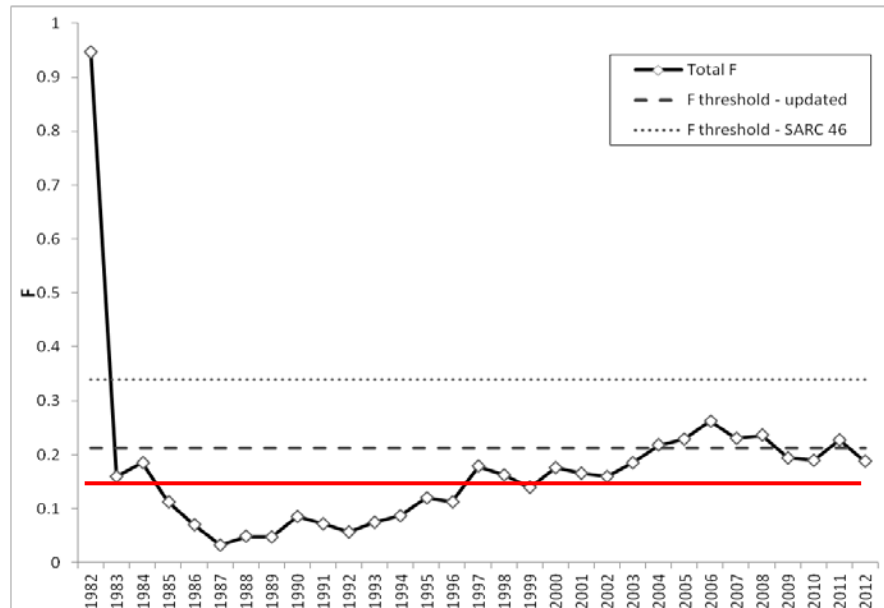
~Projections~ A 5 Year Look (2013 – 2017)

- *Maintaining the current Fishing Mortality = $F = 0.188$:*
 - *Probability of being below the SSB threshold increases until 2015/2016*
 - *Probability Declines thereafter...*



~Projections~ A 5 Year Look (2013 – 2017)

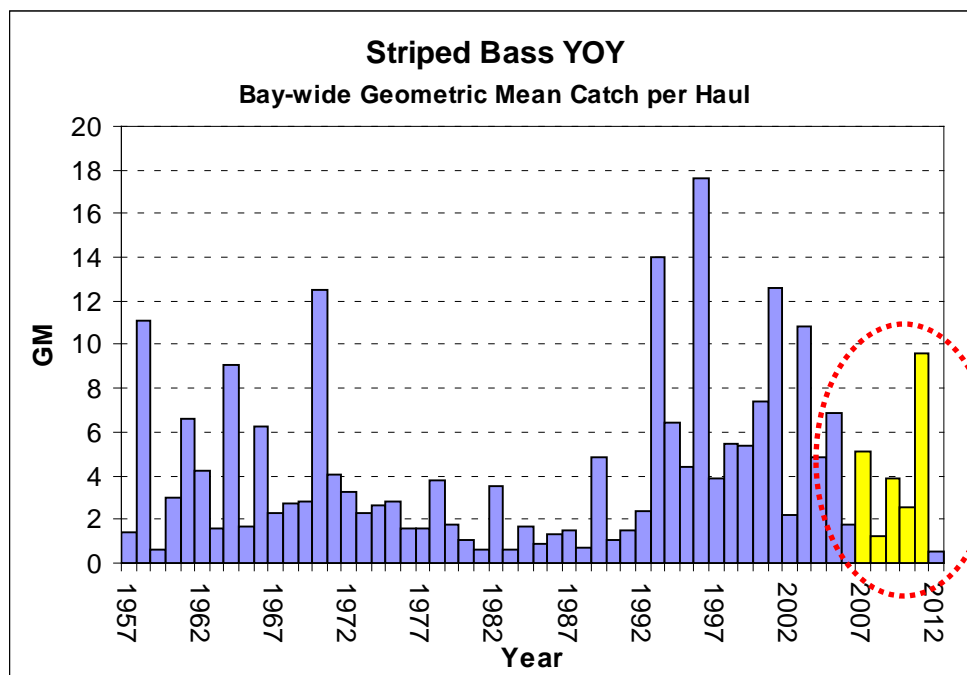
- *Maintaining the current removals (landings and dead discards = 3.59 M fish)*
 - *Probability of F being above the threshold increases in 2013 / ~100% in 2014*
 - *Reducing removals reduces the risk of exceeding the F threshold*



~Chesapeake Bay Quota~

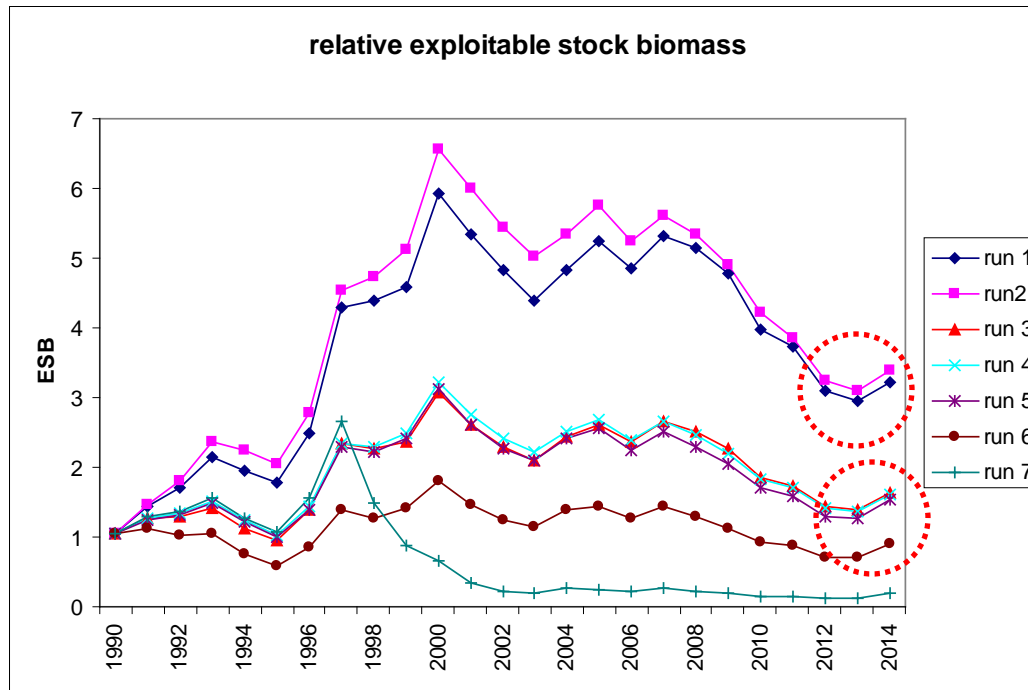
Expectations for the 2014 commercial fishery

- *Juvenile index survey (JI)*
 - *Annual survey conducted by MD and VA to determine spawning success*
 - *These data are the basis for determining the annual Chesapeake Bay quota*



~Chesapeake Bay Quota~

- *Exploitable Stock Biomass (ESB)*
 - *Fish that reside in the Chesapeake Bay and are available for harvest (>18 in)*
 - *Various model runs all indicate that the ESB in the Bay increases in 2014*



The Total Ches. Bay Quota will increase in 2014

~Questions & Discussion ~

