

ORP/DNR GULF OYSTER SHELL RECON II

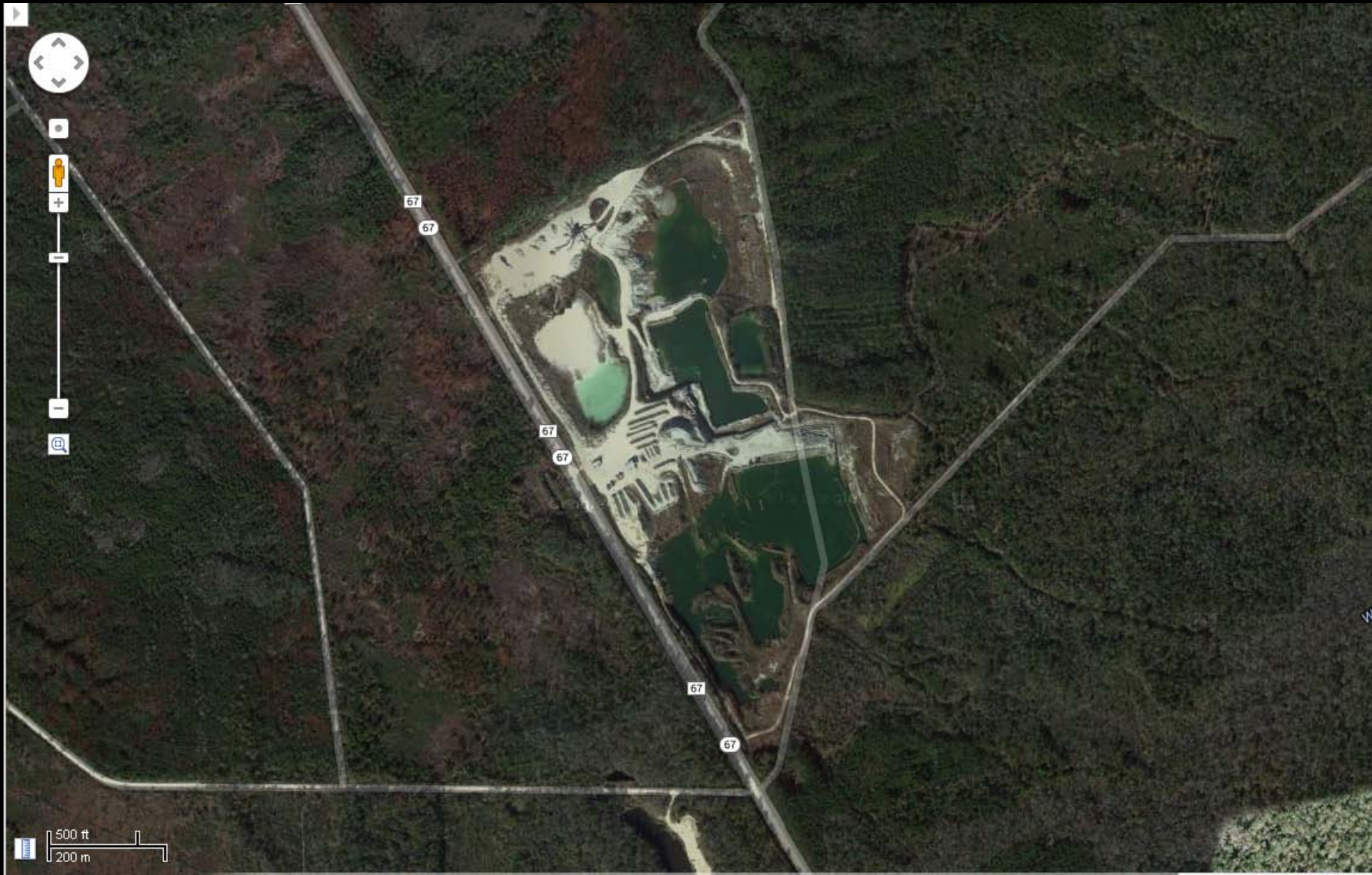


Dusty's

OYSTER BAR & EATERY











Topsoil Layer 5'

Sand and Shells Road Base Layer 12'

Dolomite Layer 4'

Oyster Shell Layer 20'

Estimated oyster shell reserves of 2,000,000 cy







Processing Plant













Hyotissa haitensis (Sowerby, 1850), late Pliocene (~2-4 million years old)



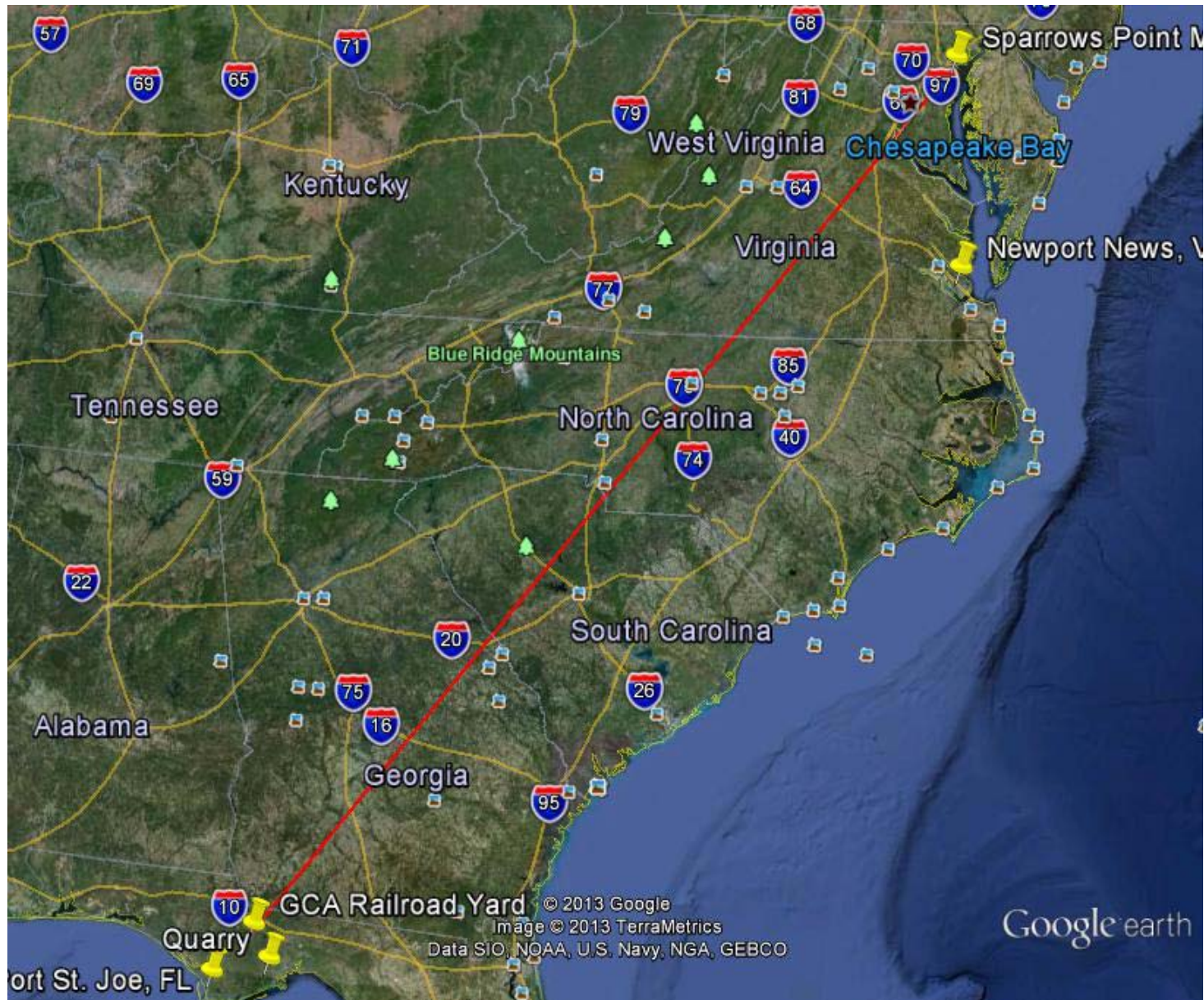


Oyster set on FL fossil shell



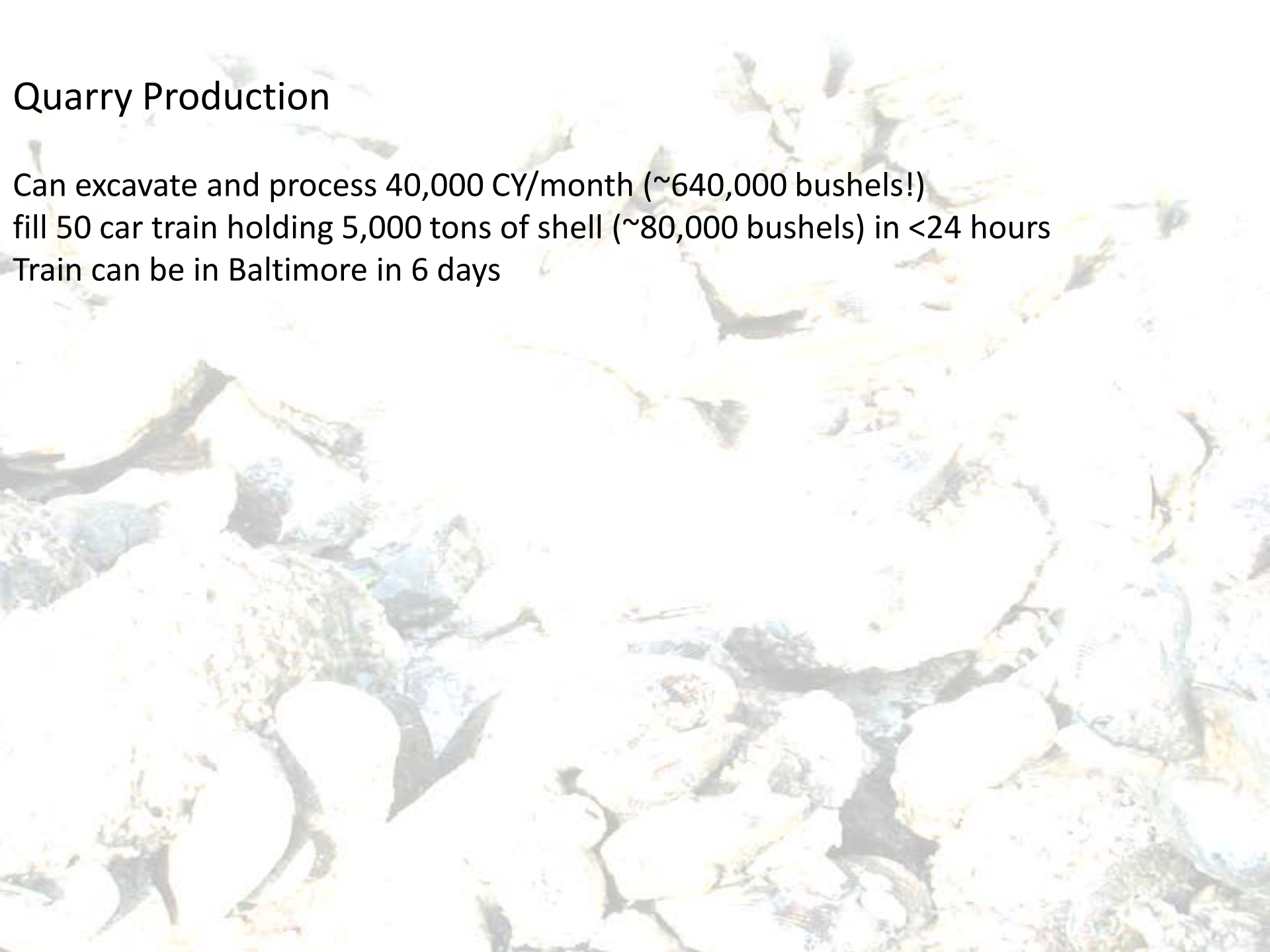


900 Miles



Quarry Production

Can excavate and process 40,000 CY/month (~640,000 bushels!)
fill 50 car train holding 5,000 tons of shell (~80,000 bushels) in <24 hours
Train can be in Baltimore in 6 days







UNITED STATES OF AMERICA FEDERAL RESERVE NOTE
HL 727434706
L12
SERIES 2009
BENJAMIN FRANKLIN
ONE HUNDRED DOLLARS
HL 727434706
FEDERAL RESERVE NOTE
ONE HUNDRED DOLLARS

Costs (delivered to water)

Granite	\$~55/CY (\$3.13/bu)
Local oyster shells	\$~75/CY
Distant oyster shells	\$~90-100/CY (~\$5.70/bu)
FL fossil shell	\$~100-135/CY
Miracle material	\$~259/CY (~15.60/bu)

