

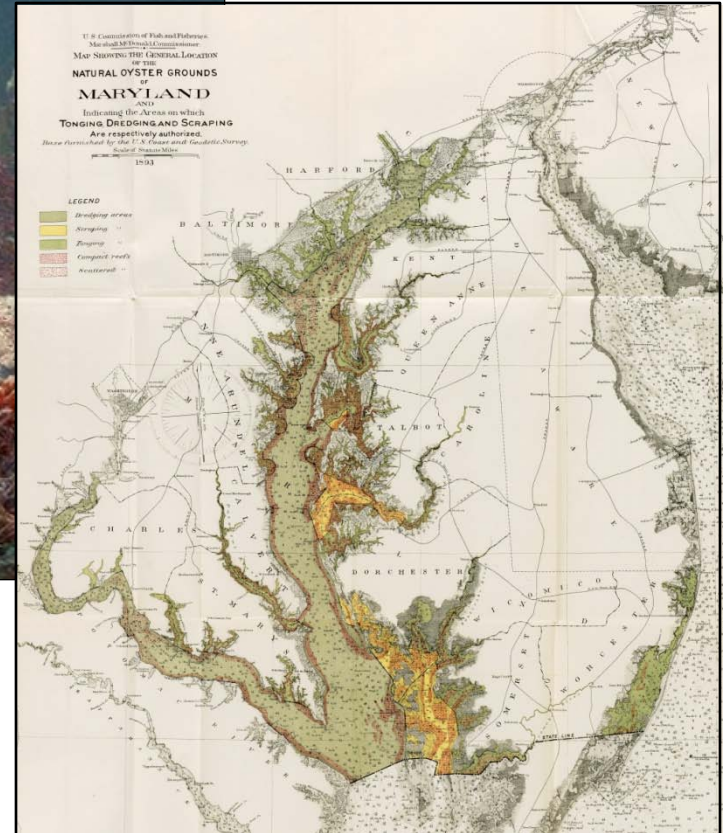


CHESAPEAKE BAY FOUNDATION
Saving a National Treasure

Simpkins Dam Recycled Concrete Oyster Reef Project

Sport Fish Advisory Commission
March 15, 2011

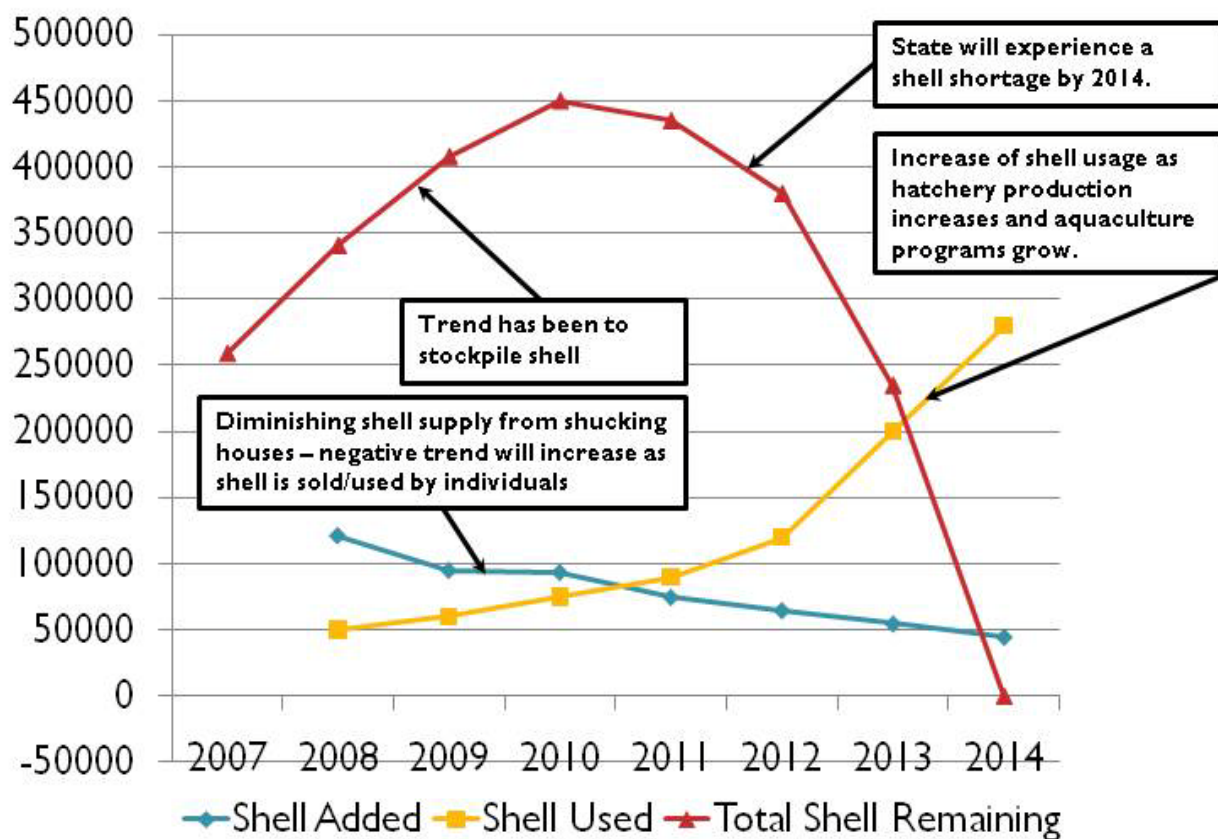
Oyster reefs: the Bay's natural structure



Reef Substrate



Oyster Shell Availability and Use



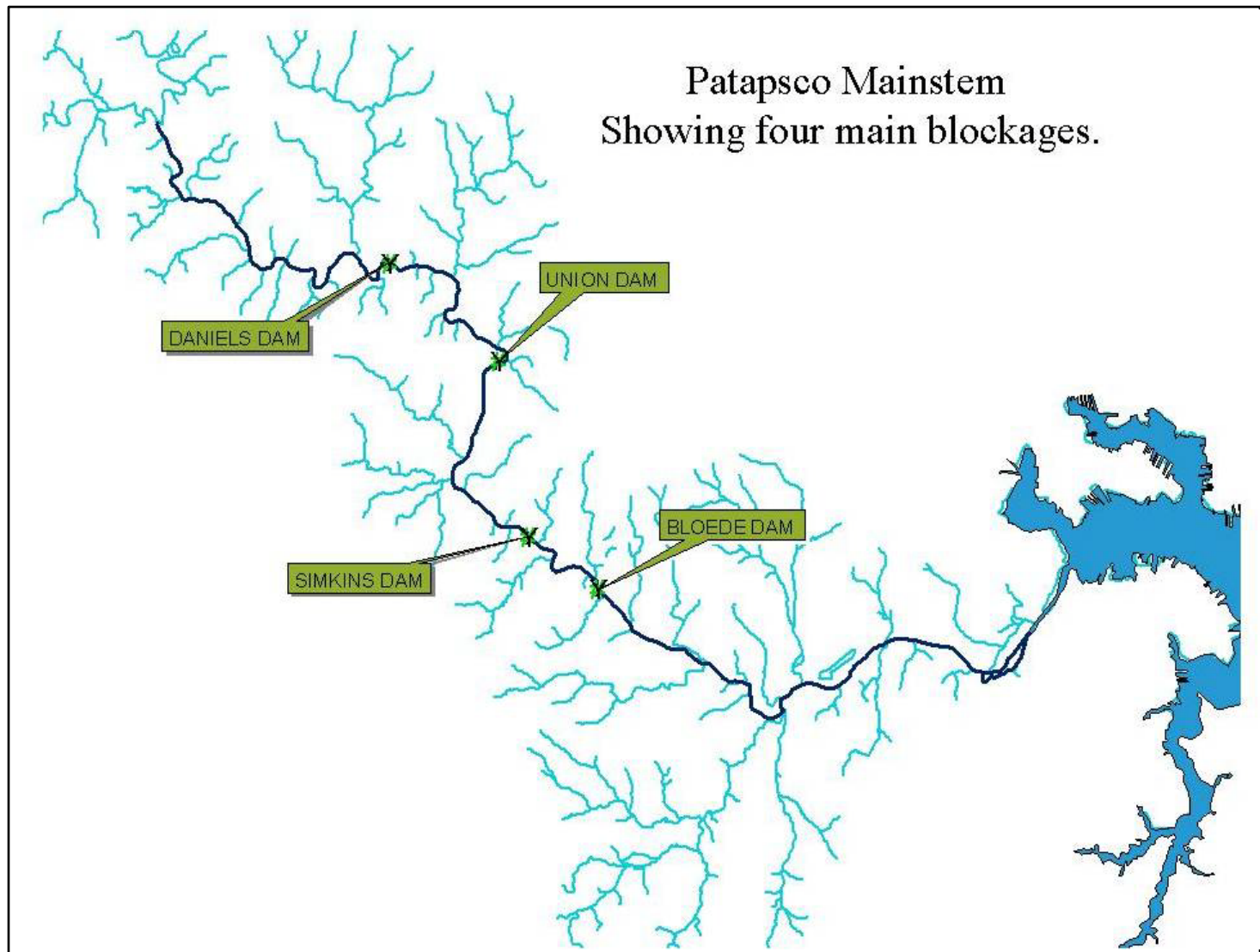
3/8/2011

1

**Goal: dismantle a dam to allow
free river flow and fish migration
and use the concrete to build an
oyster reef for fish habitat in the Bay**



Patapsco Mainstem
Showing four main blockages.



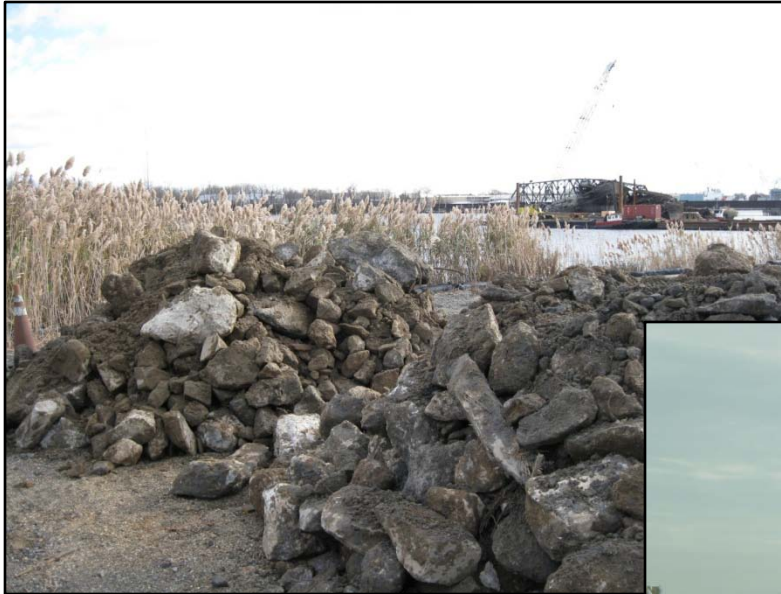
Dam demolished during December, 2010



Volume of material ~2,500 cu yds.



**Material hauled to
waterfront staging area...**



**...and barged
to Love Point...**





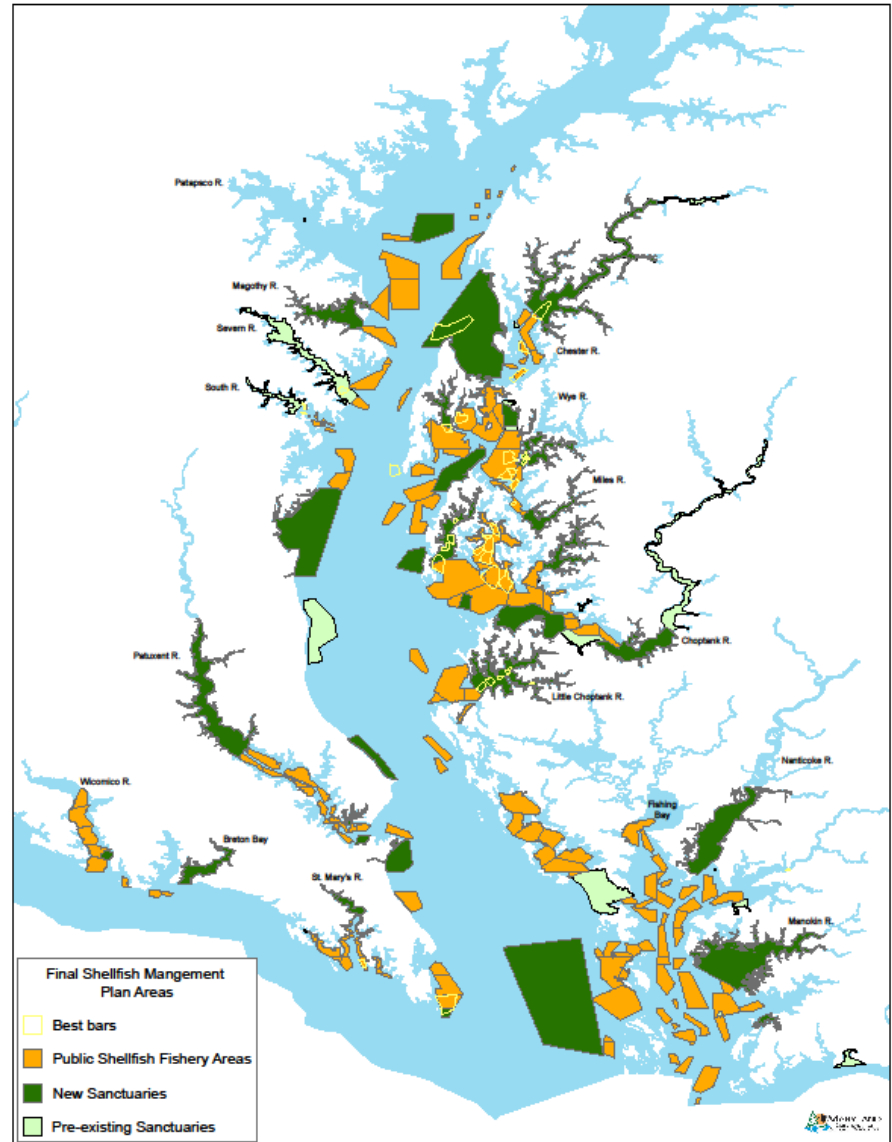
**...where it is being
processed and screened
to target size (4" – 8").**



Siting

Maryland Oyster Sanctuary Plan

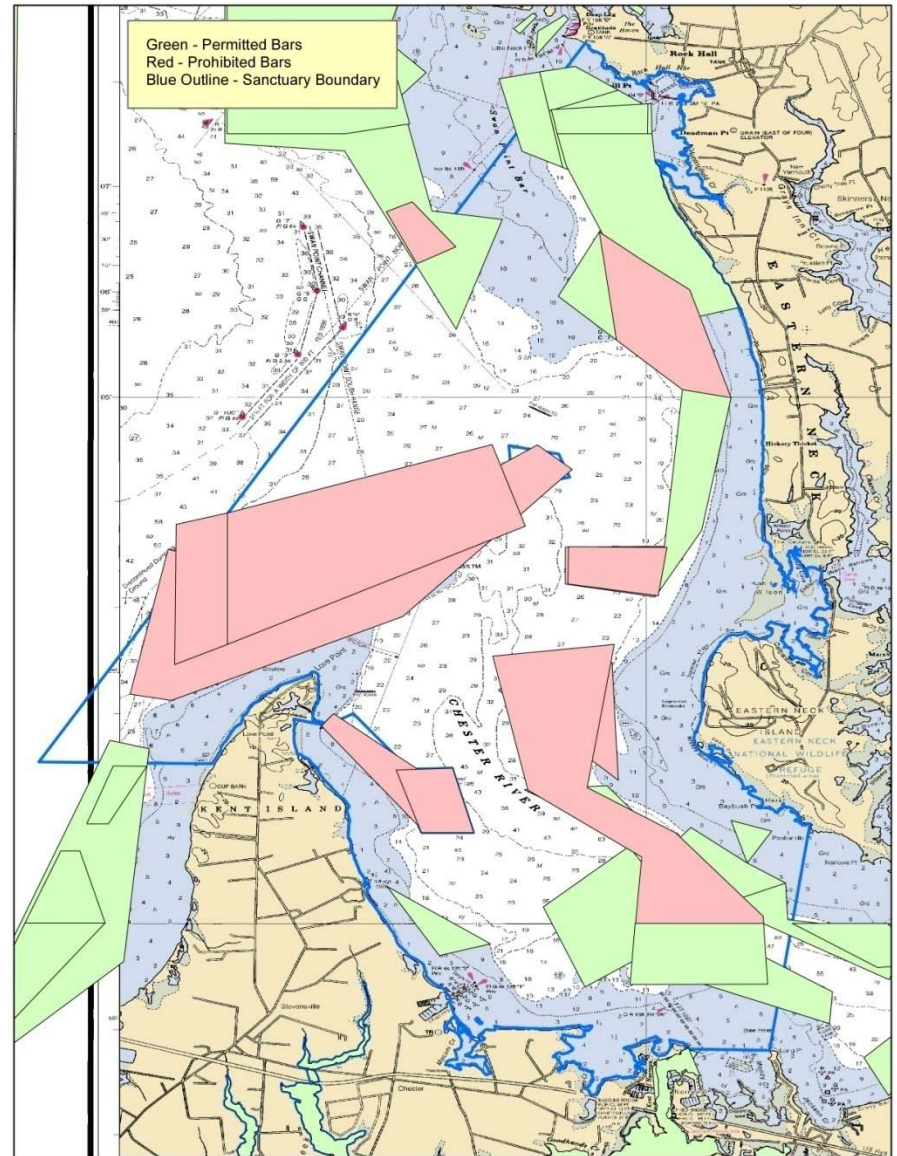
...seeking a site in the upper bay area in the vicinity of the source of the material



Siting

The mouth of the Chester River:

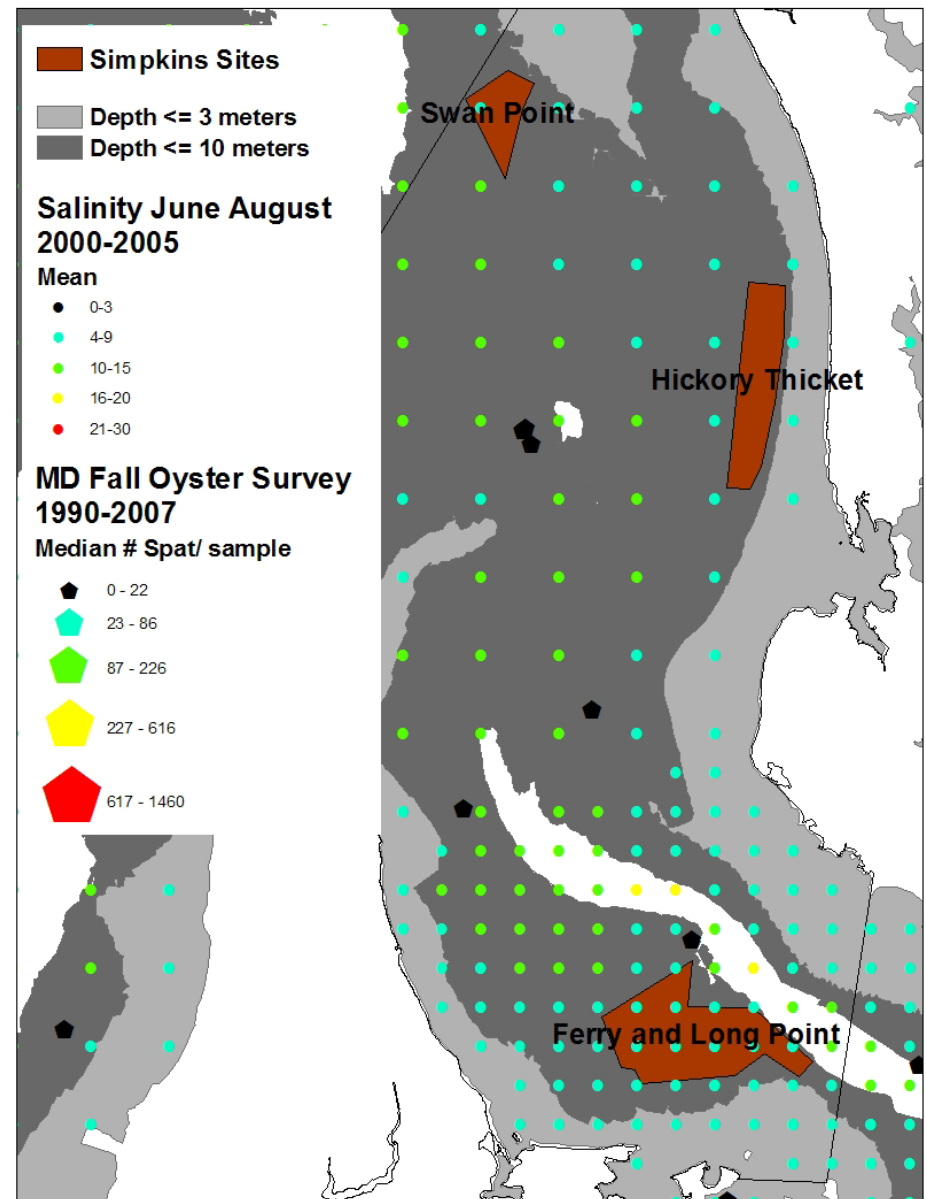
- large sanctuary zone (blue line)
- natural oyster bars (red & green areas)
- 8 foot clearance



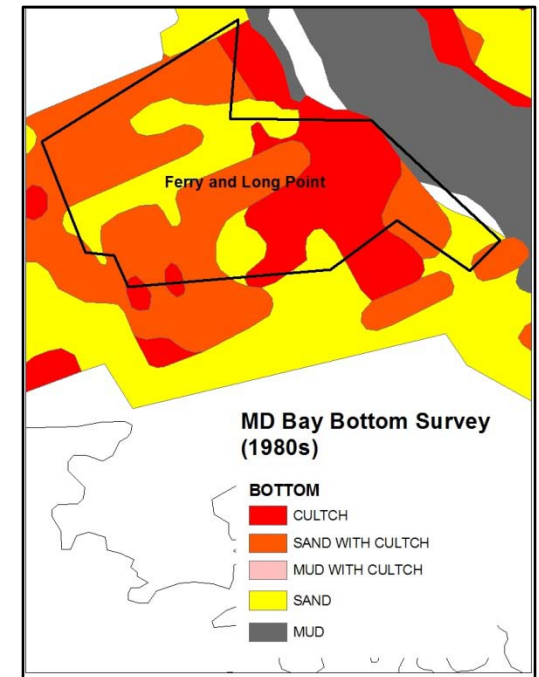
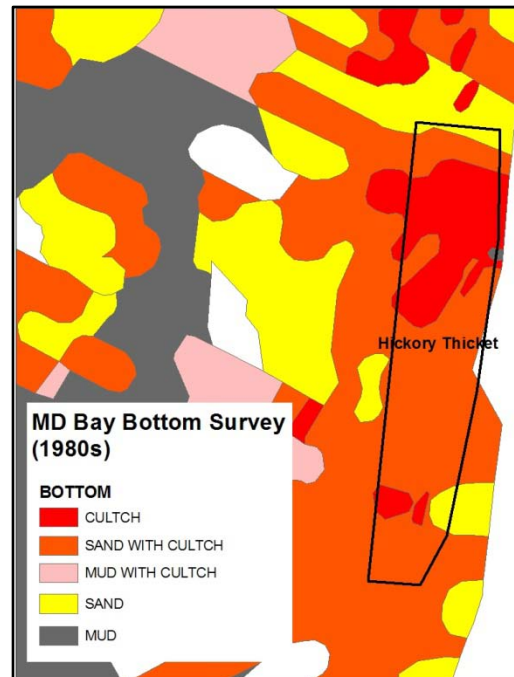
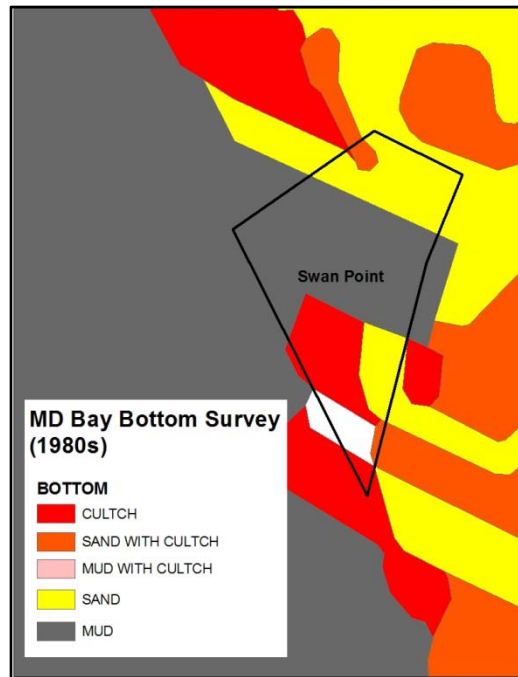
Siting

Potential reef sites that:

- are in the lower Chester River sanctuary
- are within Natural Oyster Bar areas
- have suitable depth
- are not restricted by MD Historical Trust



Bottom type for 3 possible sites





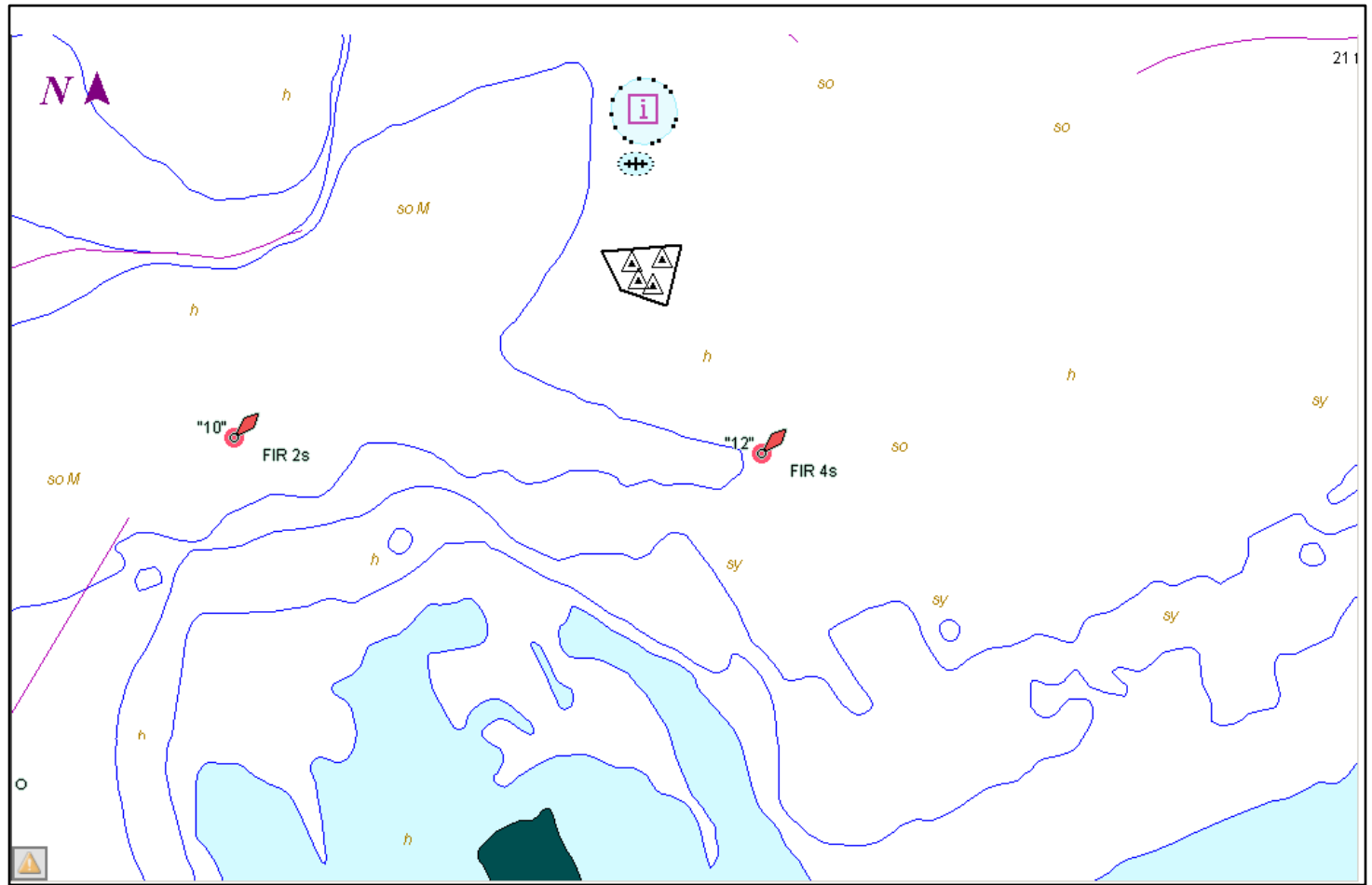
Cook's Point Sanctuary Reef Ball Project



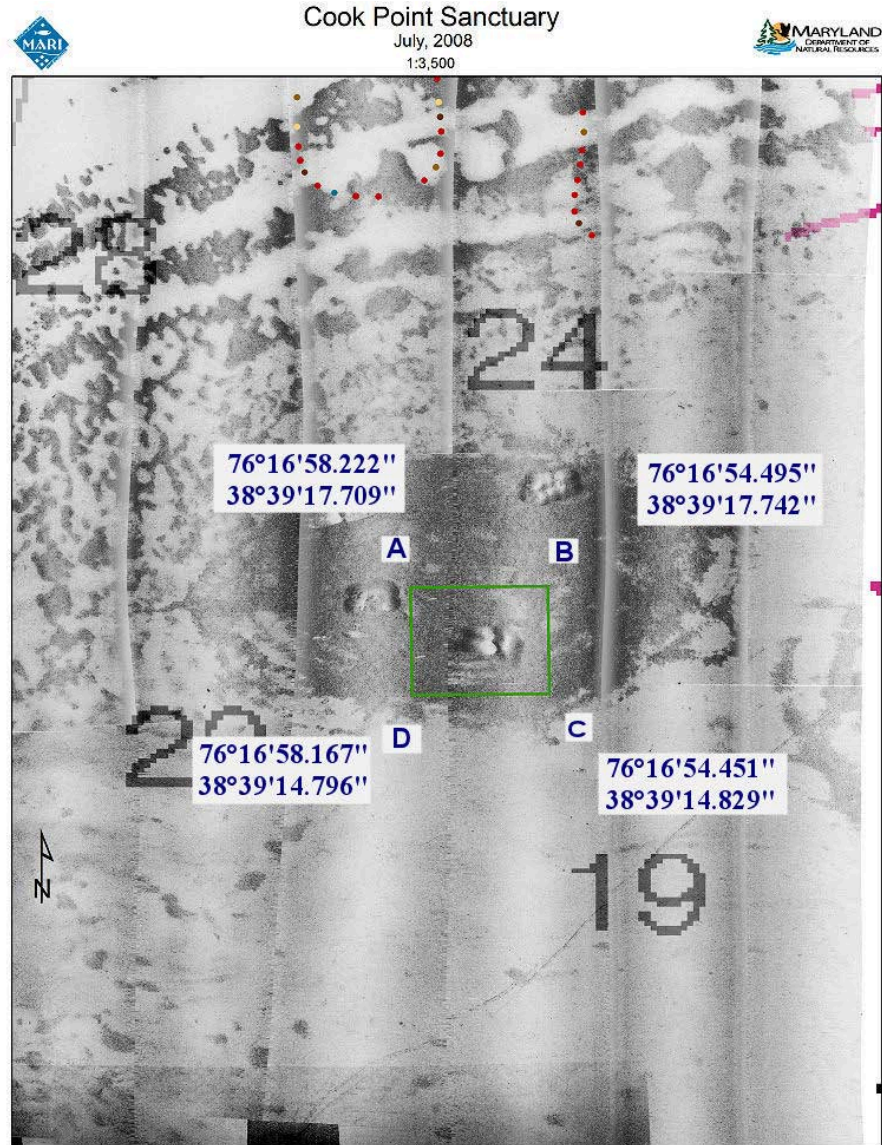
Reef Ball-making, setting & placement (240 produced in 2010)



Lower Choptank River showing Cook's Point Sanctuary



**Sidescan sonar image
of Cook's Pt Sanctuary
showing shelled area,
four shell hills, and
2-acre zone designated
for reef balls in 2008
(green box)**



Reef balls as oyster reef structure

