

A satellite image showing a large, well-defined hurricane system over the Chesapeake Bay region. The hurricane has a clear eye and a dense, swirling cloud structure. The surrounding ocean is dark blue, and the landmasses are visible in shades of green and brown. The text is overlaid on the image in yellow and white.

# Hurricane Irene and Tropical Storm Lee: Impacts to the Chesapeake Bay

Mark Trice

Maryland Department of Natural Resources

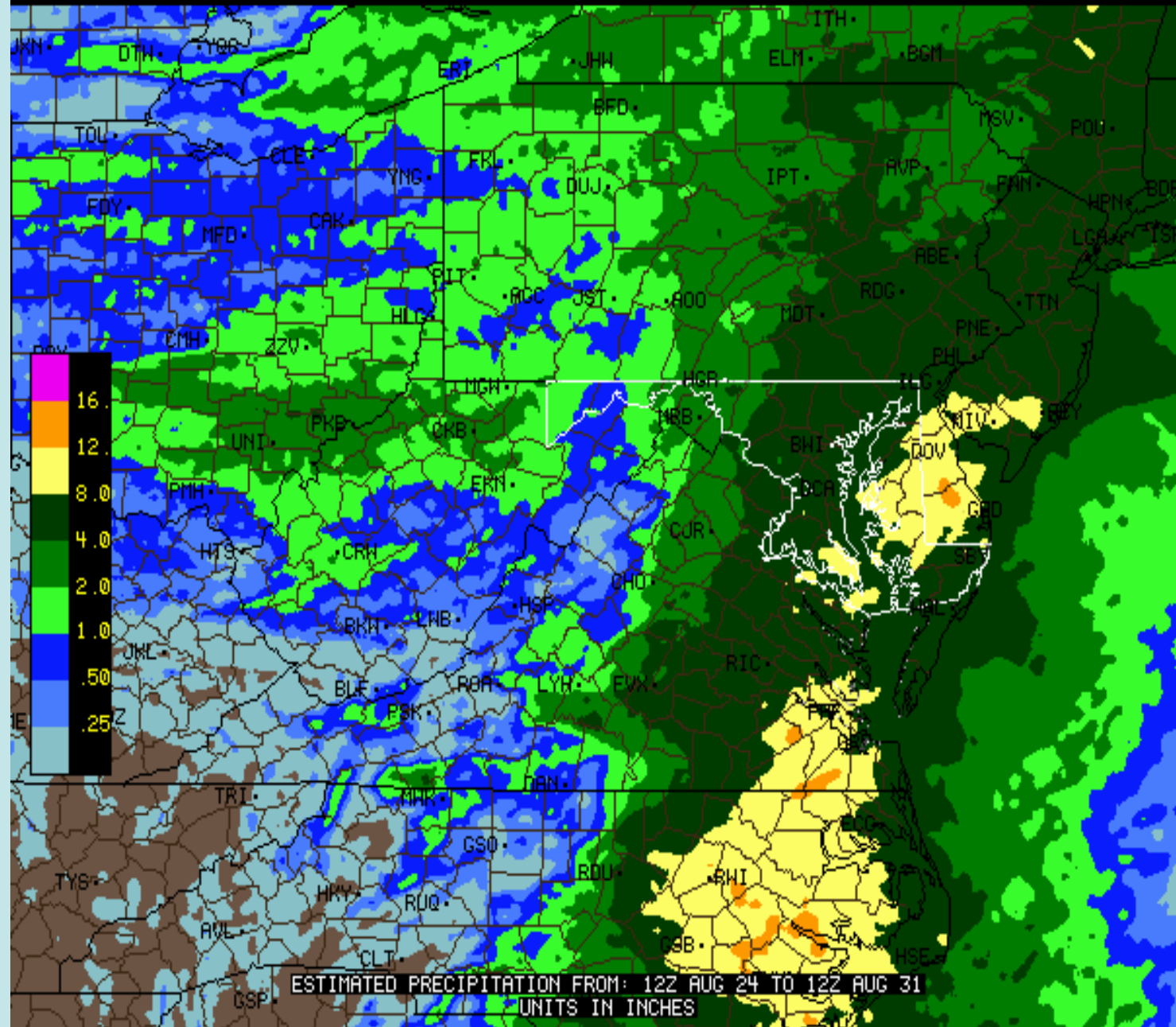
October 20<sup>th</sup>, 2011

[www.eyesonthebay.net](http://www.eyesonthebay.net)

*Hurricane Irene departing the Delmarva Peninsula – August 28, 2011  
Image courtesy of MODIS Rapid Response Project at NASA/GSFS (250m resolution, True color)*

# Hurricane Irene

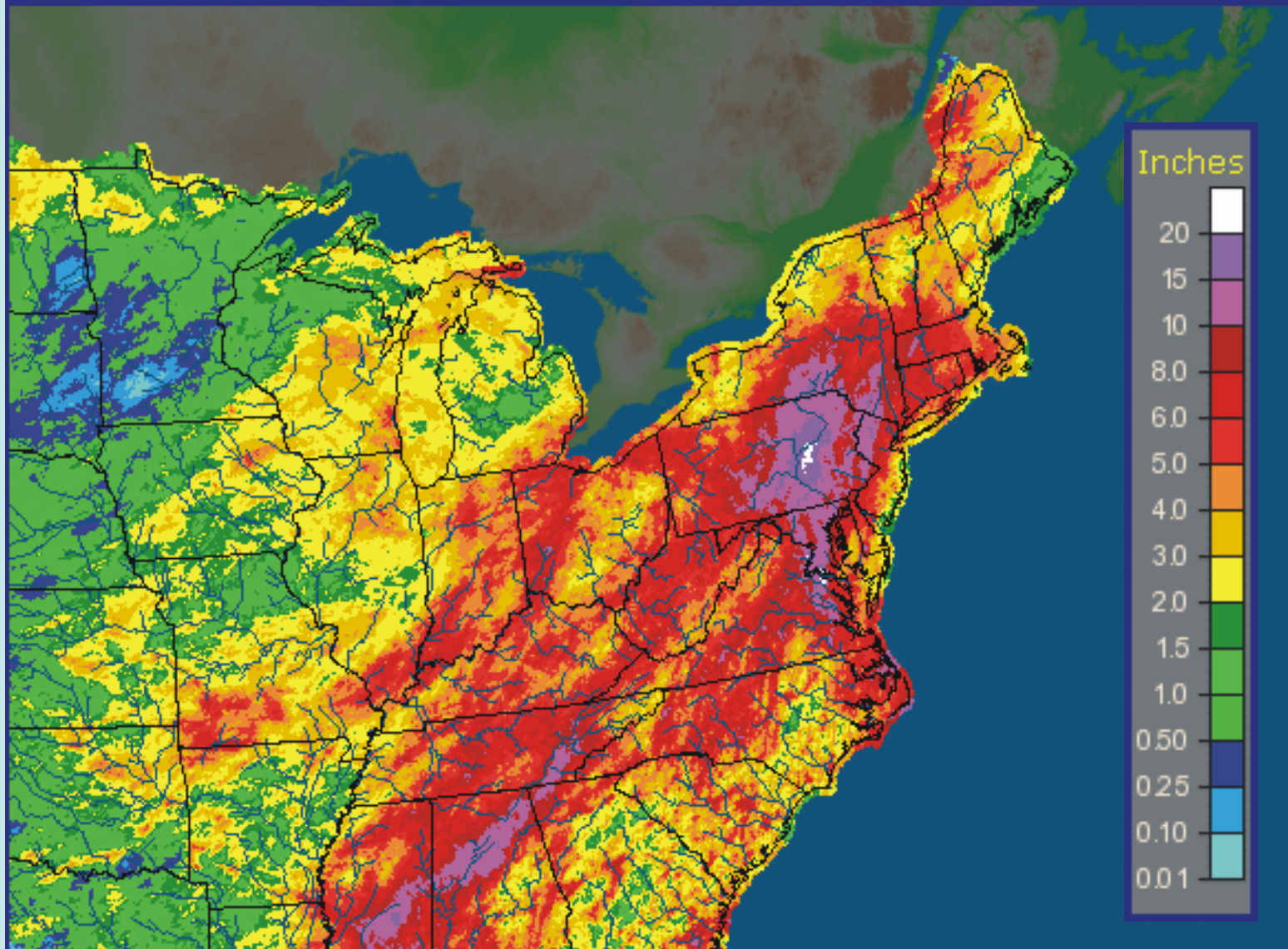
- August 27-28, 2011
- Precipitation centered on Eastern Shore, Delaware River Basin & NJ.
- High flows on some areas of Eastern shore (Choptank River)
- High north/northwest winds



# Tropical Storm Lee

- Precipitation centered on upper western shore north to New York
- Freshwater flow from Tropical Storm Lee ranks 2<sup>nd</sup> all-time in recorded freshwater flow behind Tropical Storm Agnes (1972)
- Heavy scouring of sediment behind Conowingo Dam

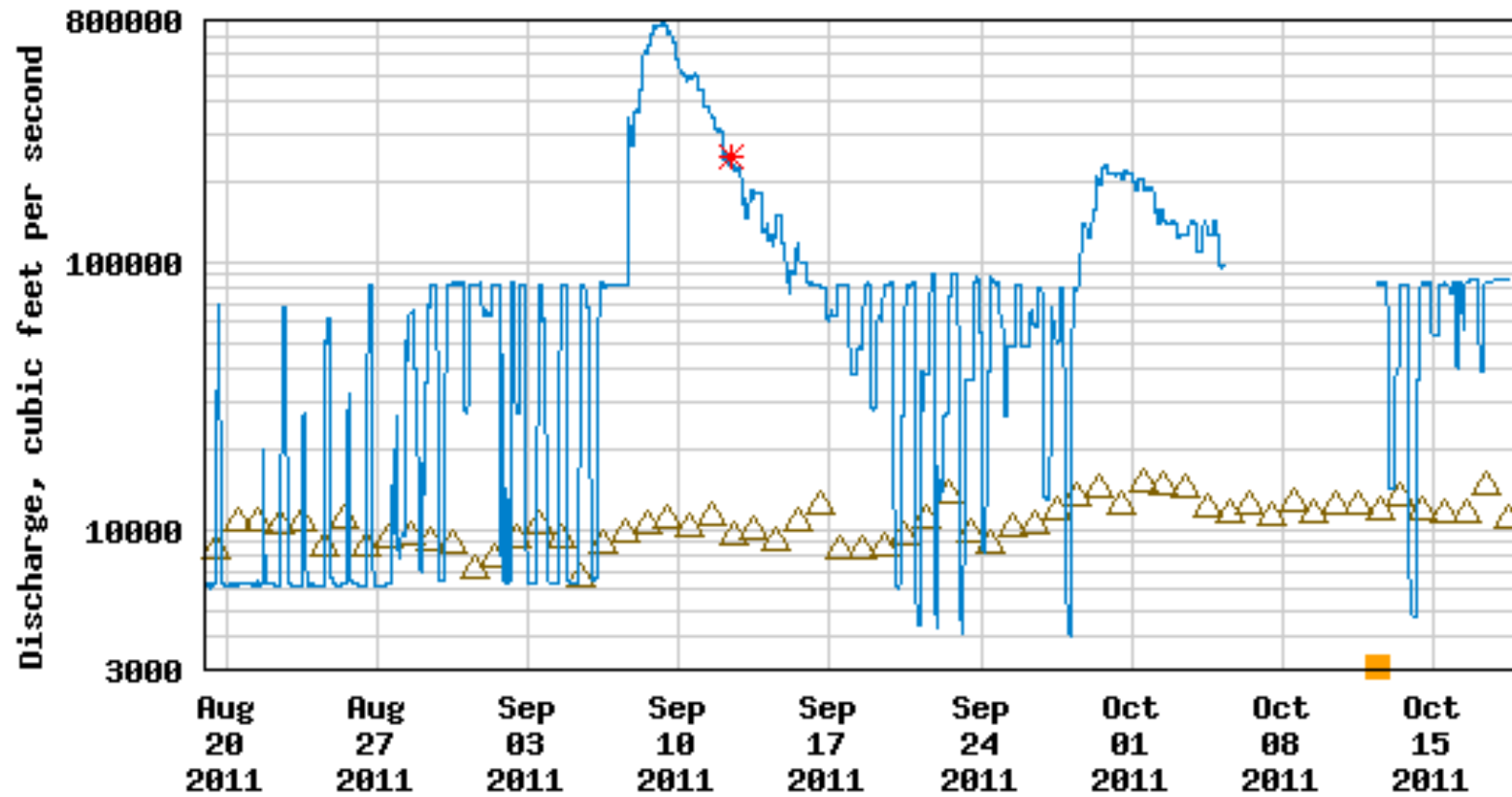
NWS Eastern Region: Current 30-Day Observed Precipitation  
Valid at 9/29/2011 1200 UTC - Created 9/30/11 0:05 UTC



September 2011 rainfall estimate (including Tropical Storm Lee but not Hurricane Irene) <http://water.weather.gov/precip/>



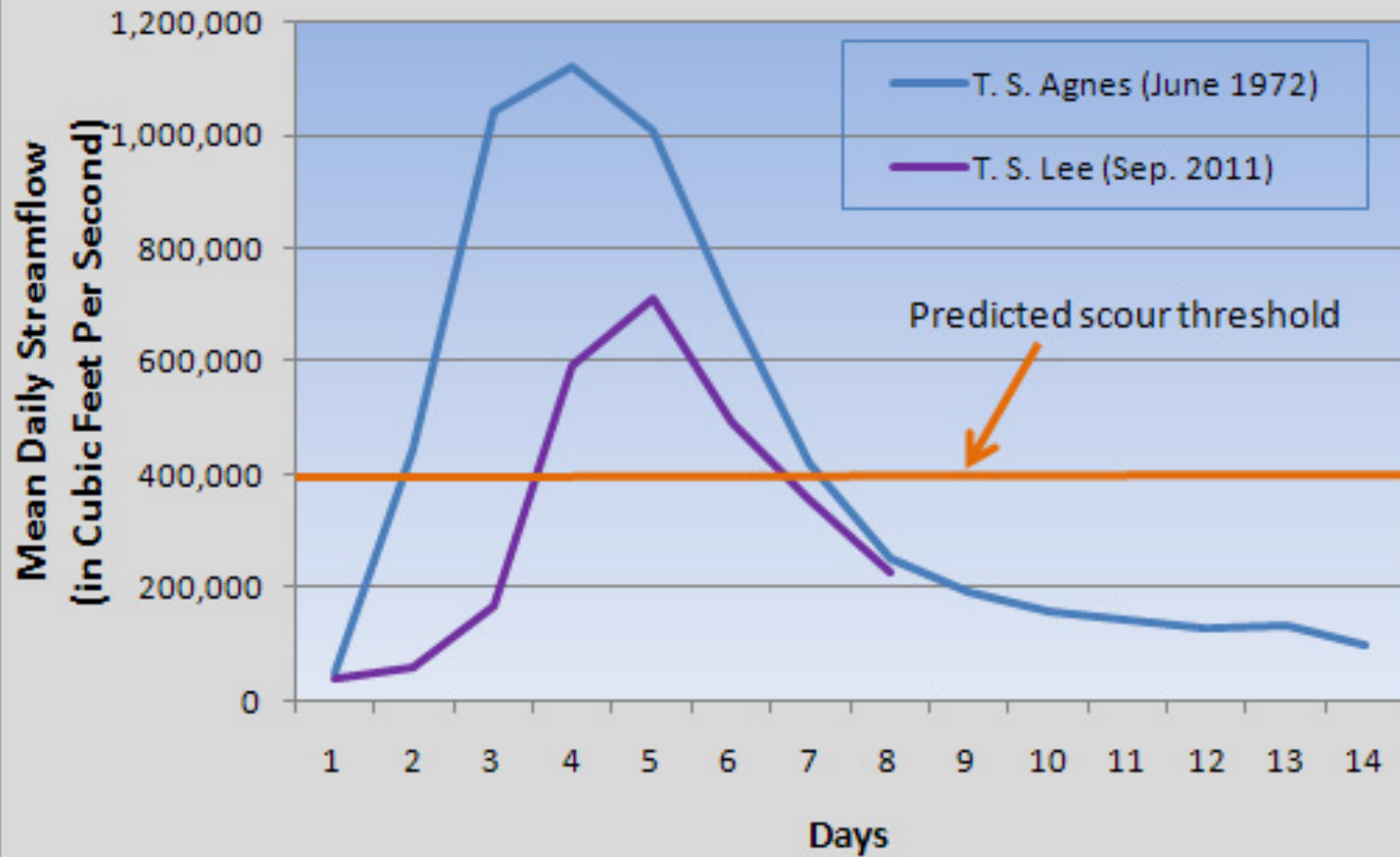
## USGS 01578310 SUSQUEHANNA RIVER AT CONOWINGO, MD



----- Provisional Data Subject to Revision -----

- △ Median daily statistic (43 years)
- Data temporarily unavailable
- Discharge
- \* Measured discharge

## Susquehanna River at Conowingo, MD



Graph from USGS, <http://chesapeake.usgs.gov/featuresedimentscourconowingo.html>

# USGS Streamflow

<http://waterwatch.usgs.gov/new/index.php?m=wwmaps>



September 10-14th



October 5-9th  
October 15th



# Maryland DNR Water Quality Monitoring Programs

## Intensive / Shallow Water Monitoring Component



### Continuous *In Situ* Monitoring

- 39 Monitors in 2010
- Includes 1 Vertical Profiler and 1 buoy with associated bottom monitors.
- Data collected every 15 minutes
- Parameters: D.O., Turbidity, Chlorophyll W.Temp, Salinity, pH, Depth
- Calibration Data Every 2 weeks



### Water Quality Mapping

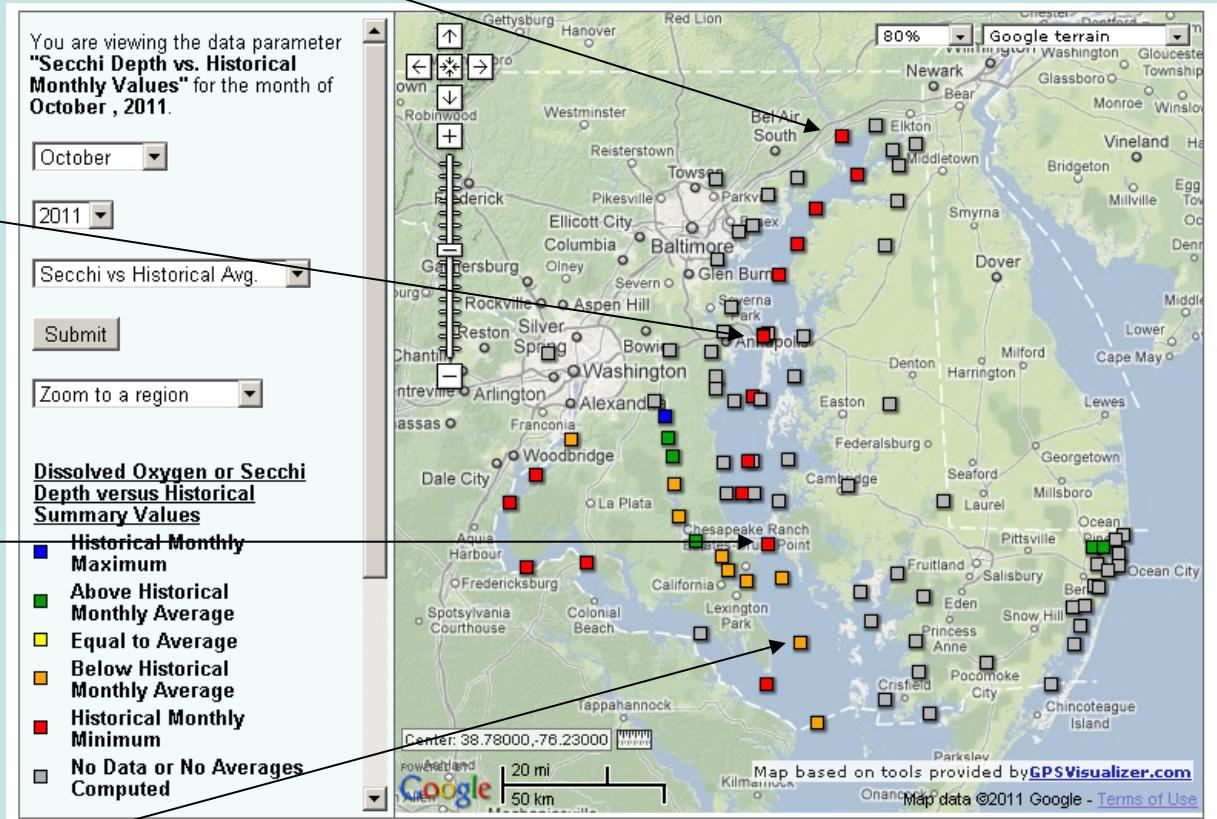
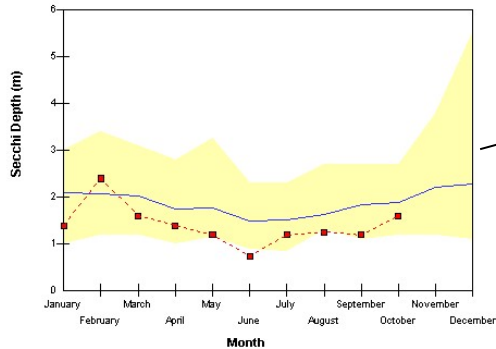
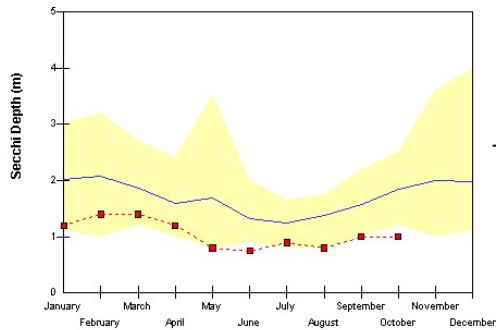
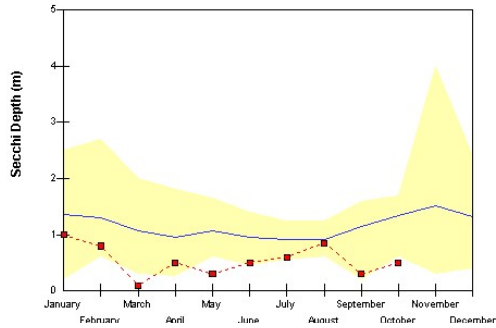
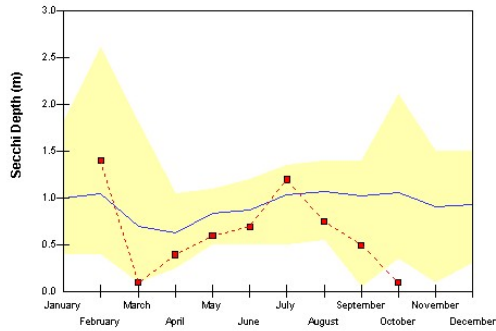
- 6 Monthly cruises Apr.-Oct in 2010 over large areas.
- Data collected every 4 seconds in transit
- Parameters: D.O., Turbidity, Chlorophyll W.Temp, Salinity, pH, Water Depth
- Calibration Data at ~5 Sites each Cruise



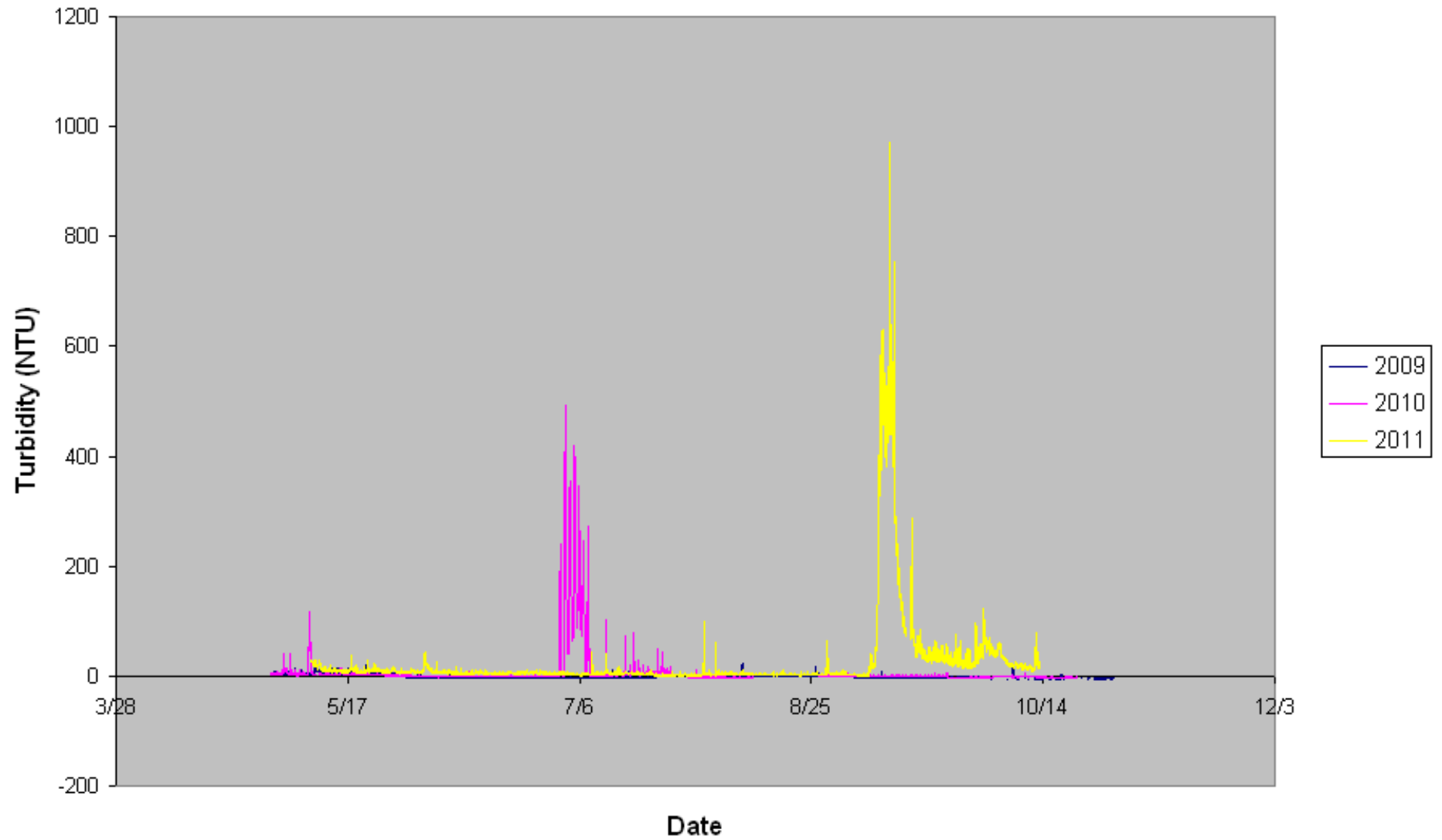
### Long-Term Fixed Station Monitoring

- Monthly/Twice Monthly cruises year round
- Collected Since 1985
- 80+ Stations
- Full suite of parameters and depth profiles

# Record Low Water Clarity Throughout Year

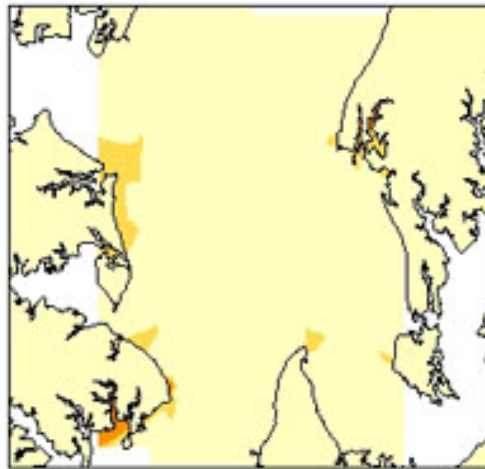


## Susquehanna Flats Water Clarity

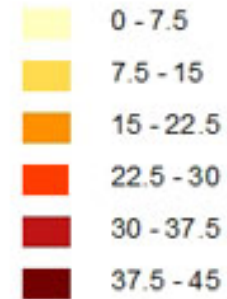


## Water Quality Mapping Turbidity

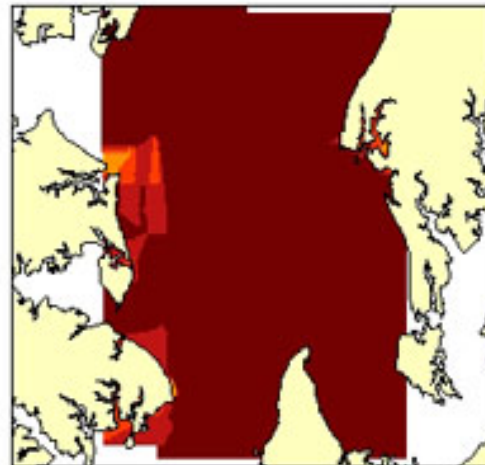
### Chesapeake Bay Segment 3 (North of Bay Bridge to Above Patapsco River)



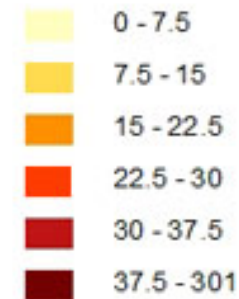
Turbidity (NTU)



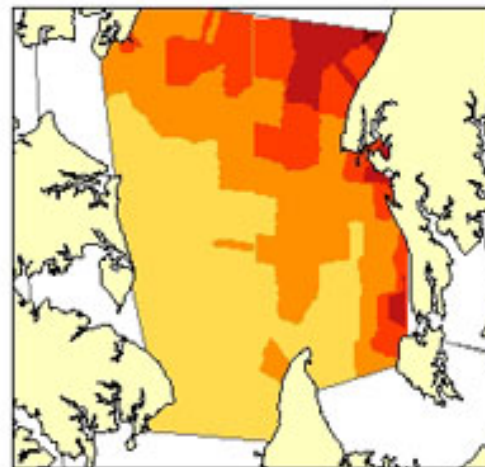
**8/17/2011**



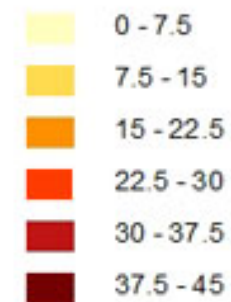
Turbidity (NTU)



**9/14/2011**



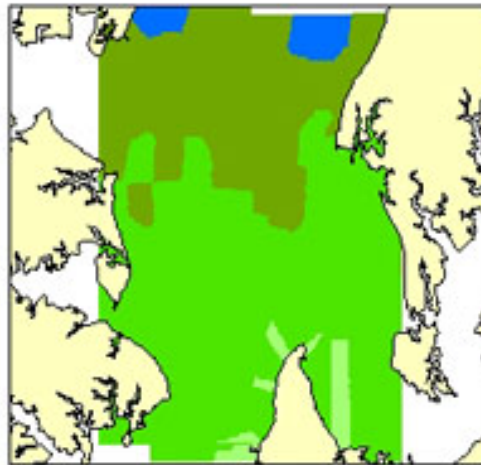
Turbidity (NTU)



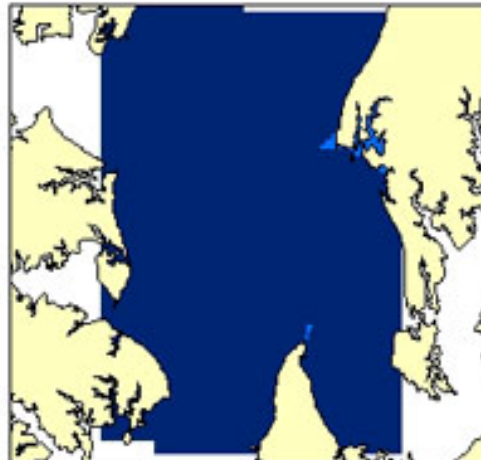
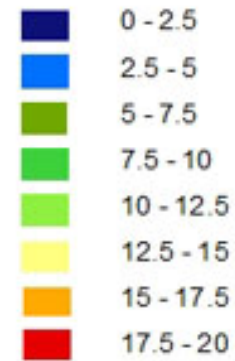
**10/3/2011**

## Water Quality Mapping Salinity

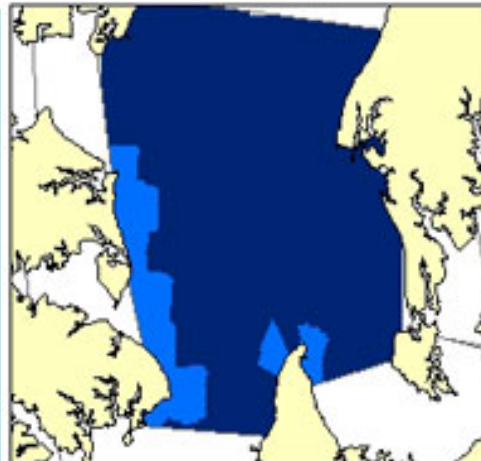
Chesapeake Bay  
Segment 3  
(North of Bay Bridge to  
Above Patapsco River)



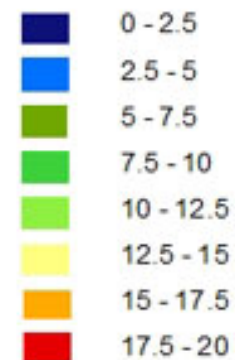
Salinity (ppt)



Salinity (ppt)



Salinity (ppt)

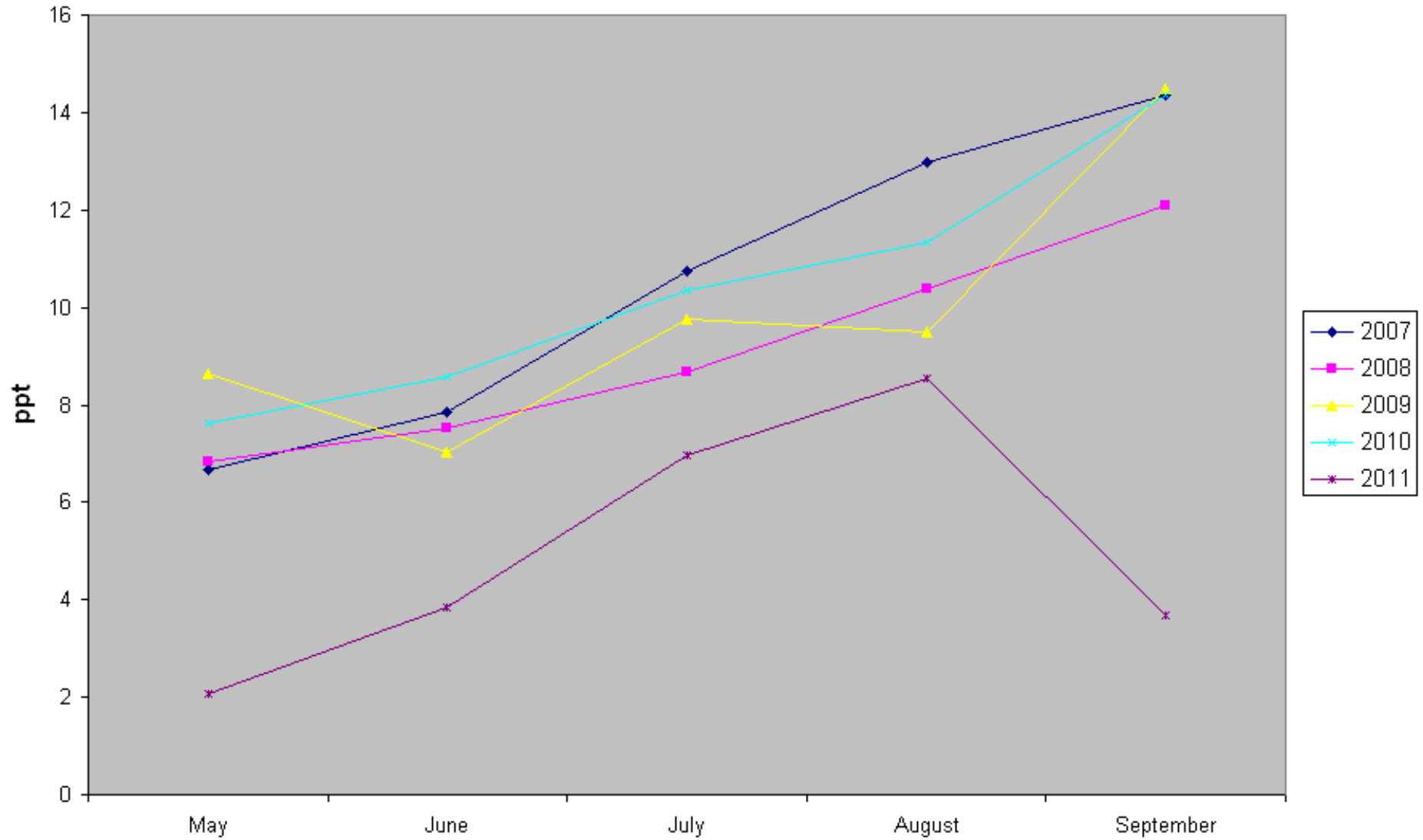


8/17/2011

9/14/2011

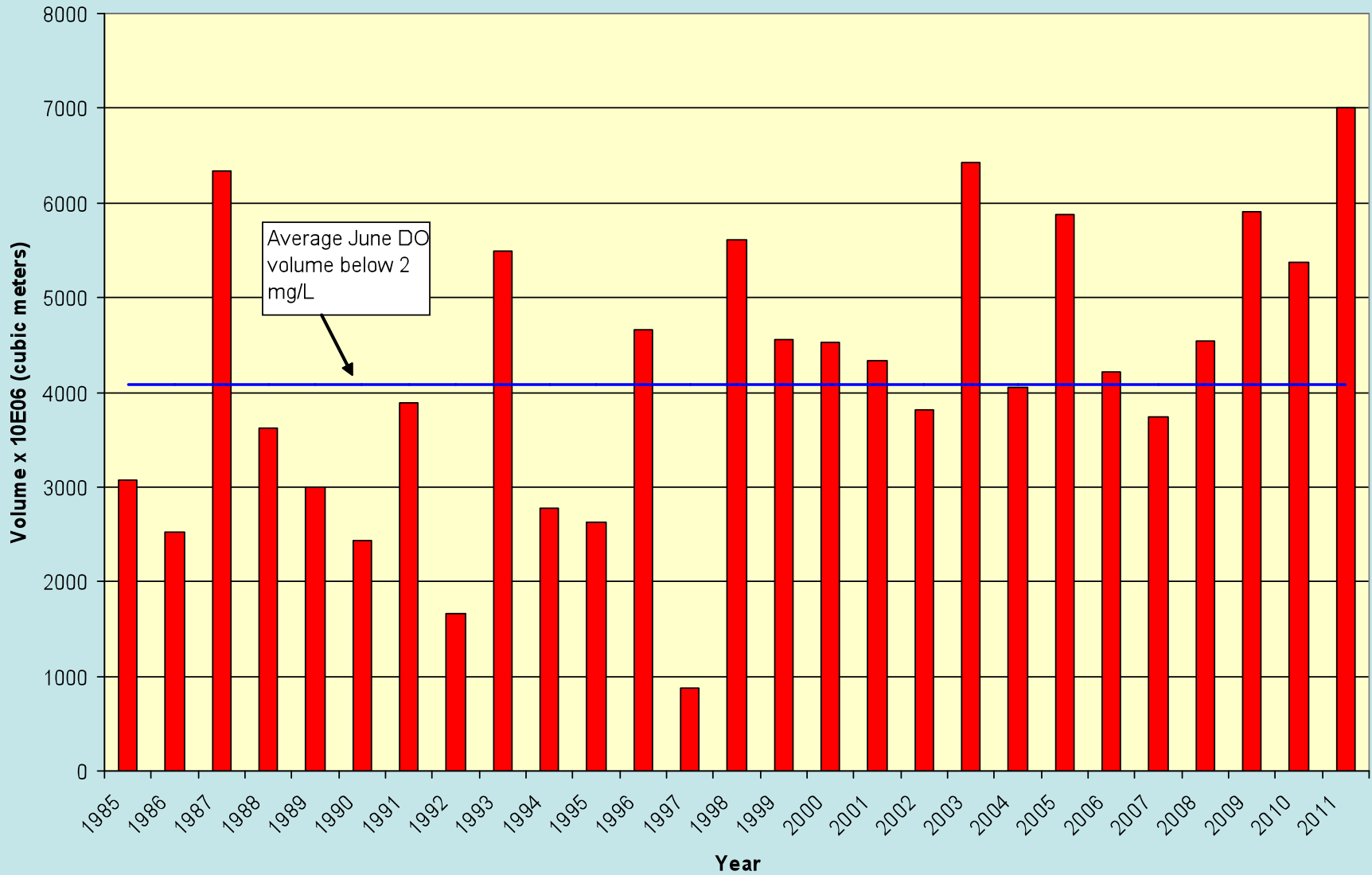
10/3/2011

## Average Monthly Salinity - Sandy Point





Dissolved oxygen volume below 2 mg/L for the Maryland main Bay for the average of June cruises

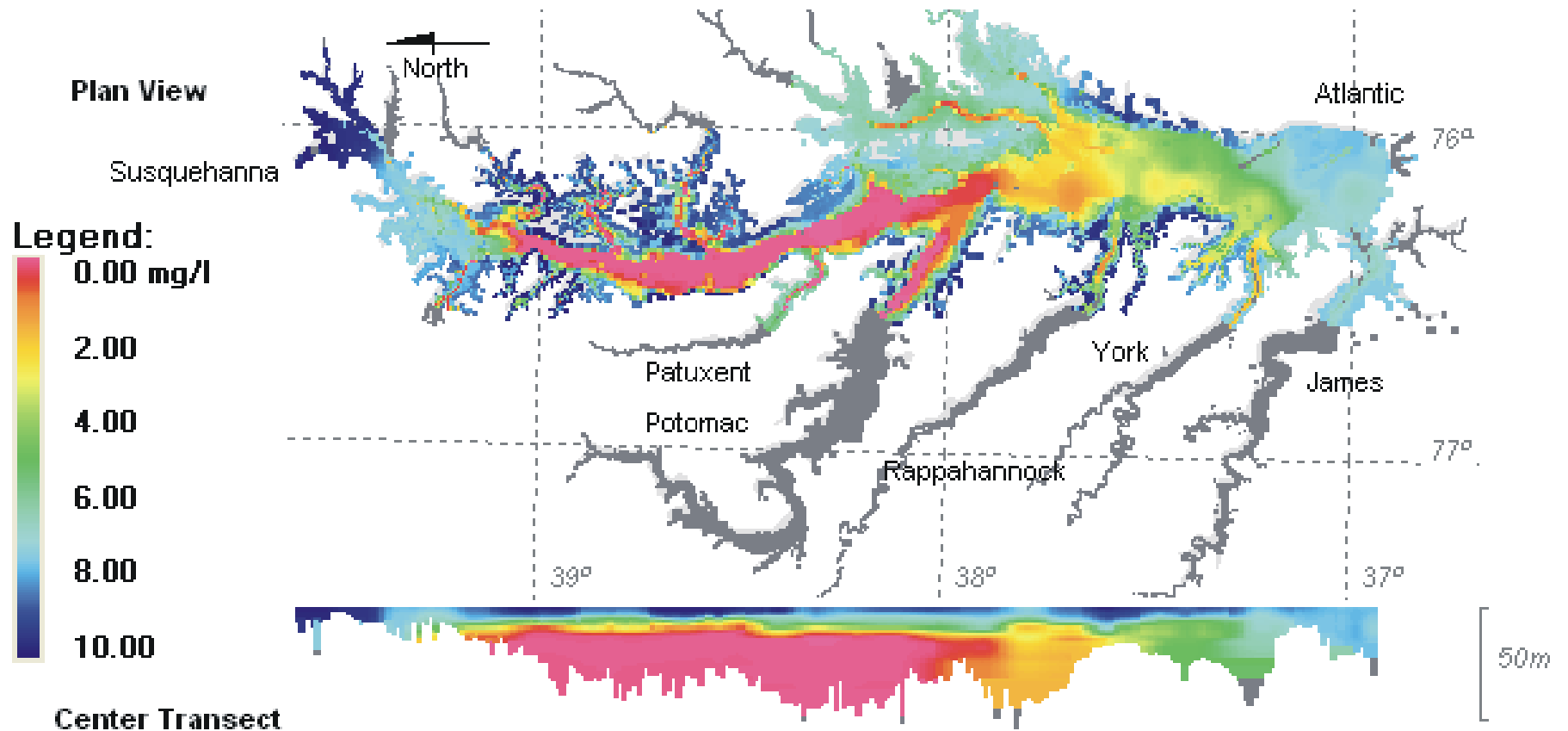




# CHESAPEAKE BAY

## Planview Plot of Minimum Conditions

First June 2011 Cruise - Jun 6, 2011-Jun 8, 2011



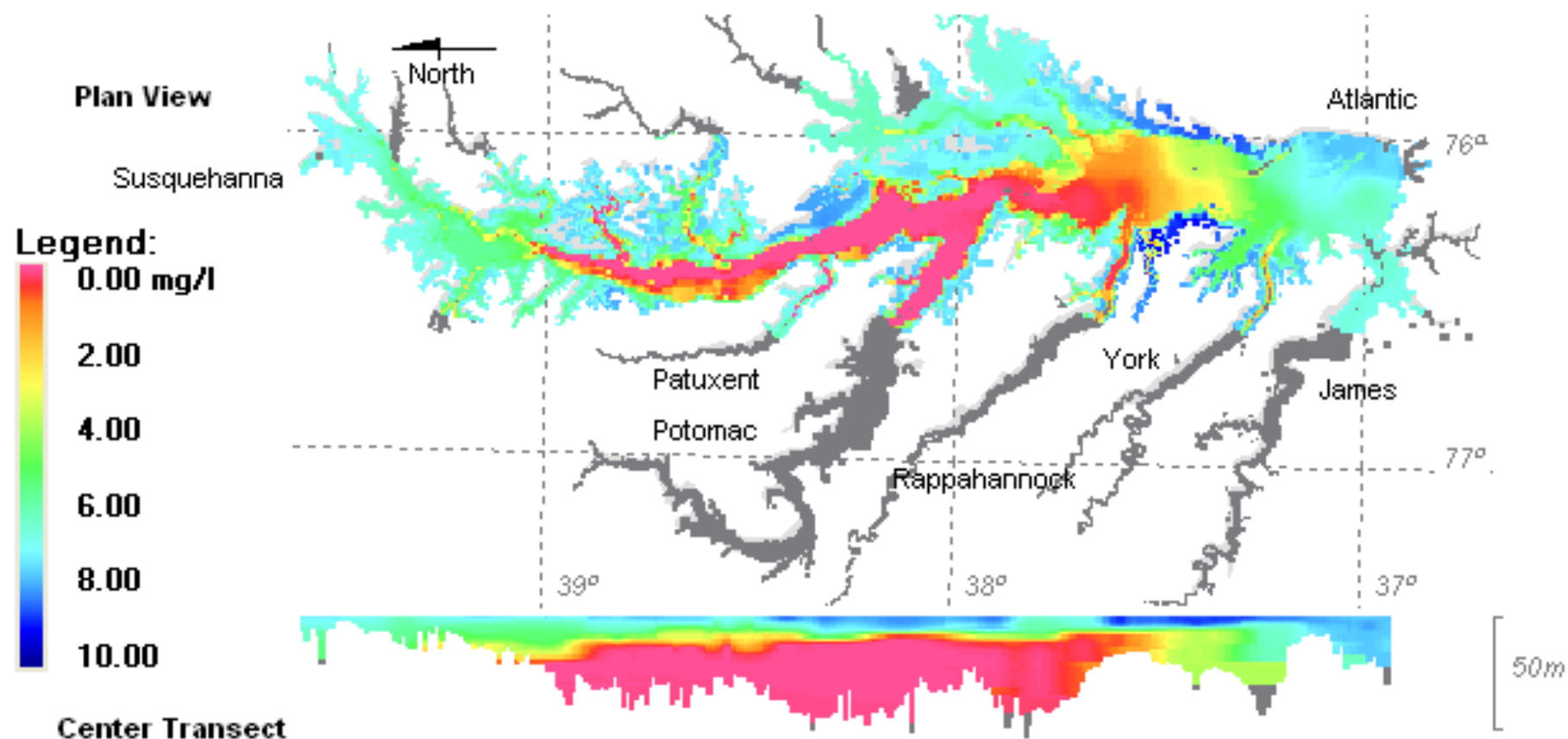
NOAA Chesapeake Bay Office



# CHESAPEAKE BAY

## Planview Plot of Minimum Conditions

First July 2011 Cruise - Jul 11, 2011-Jul 13, 2011

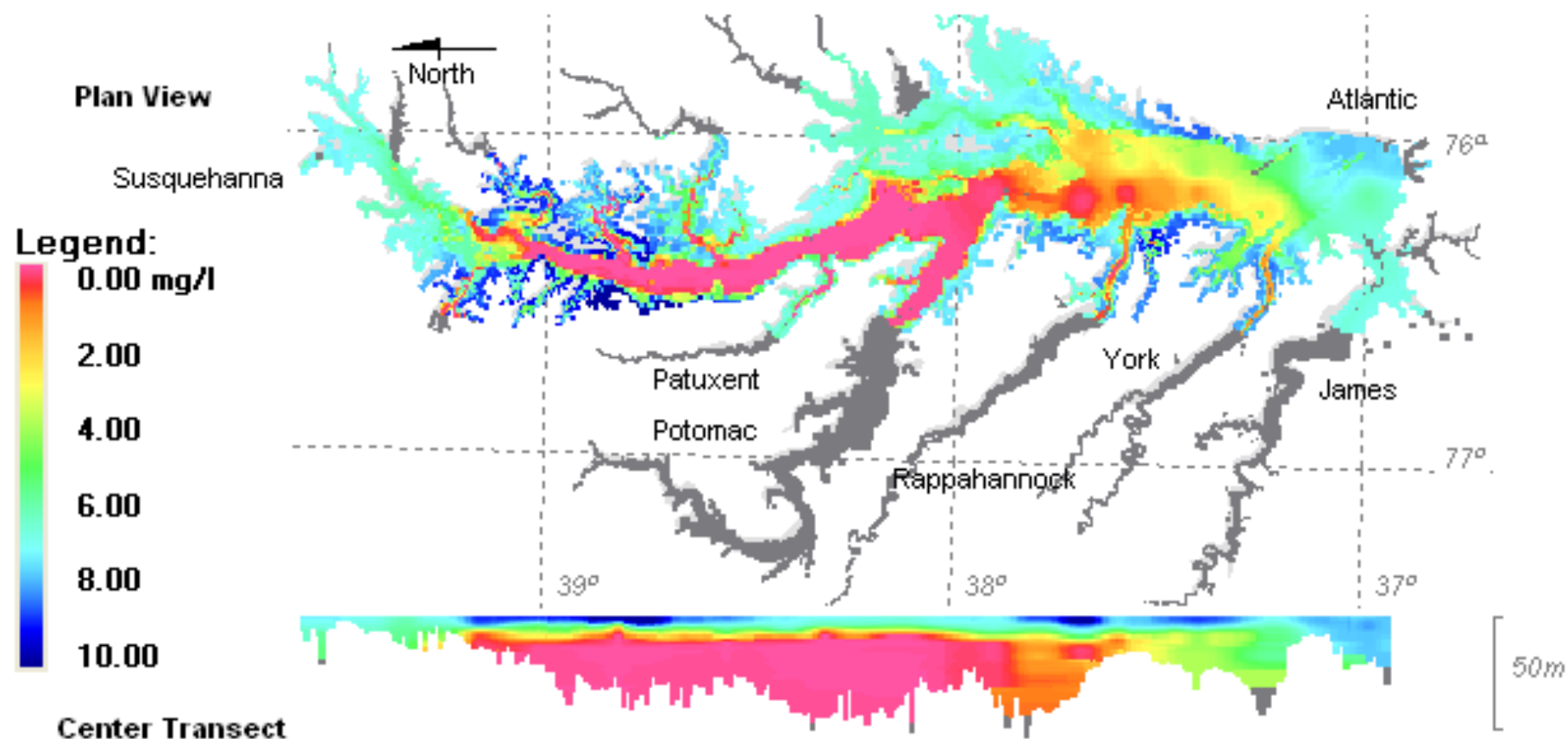




# CHESAPEAKE BAY

## Planview Plot of Minimum Conditions

Full Second July 2011 Cruise - Jul 25, 2011-Jul 27, 2011

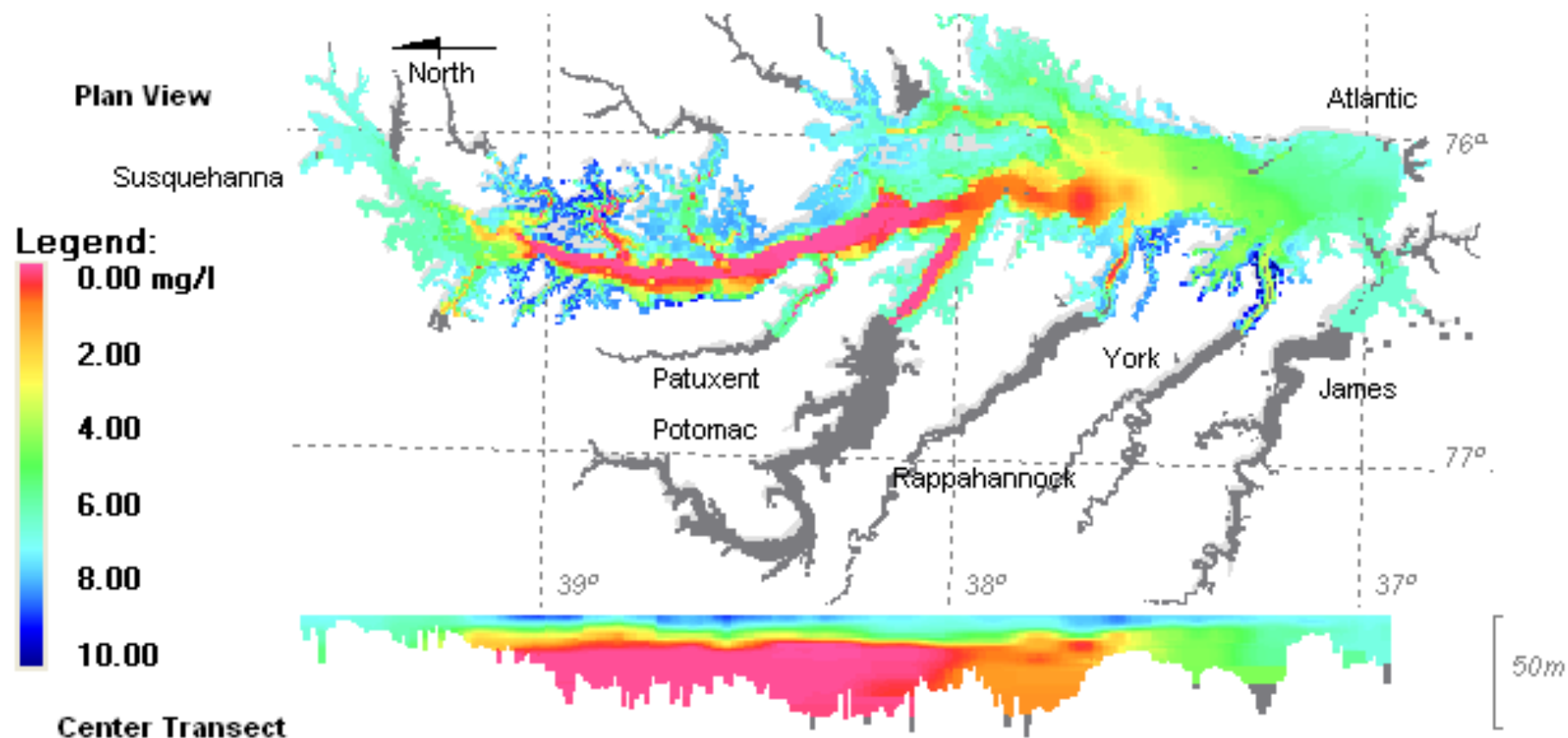




# CHESAPEAKE BAY

## Planview Plot of Minimum Conditions

First August 2011 Cruise - Aug 8, 2011-Aug 17, 2011

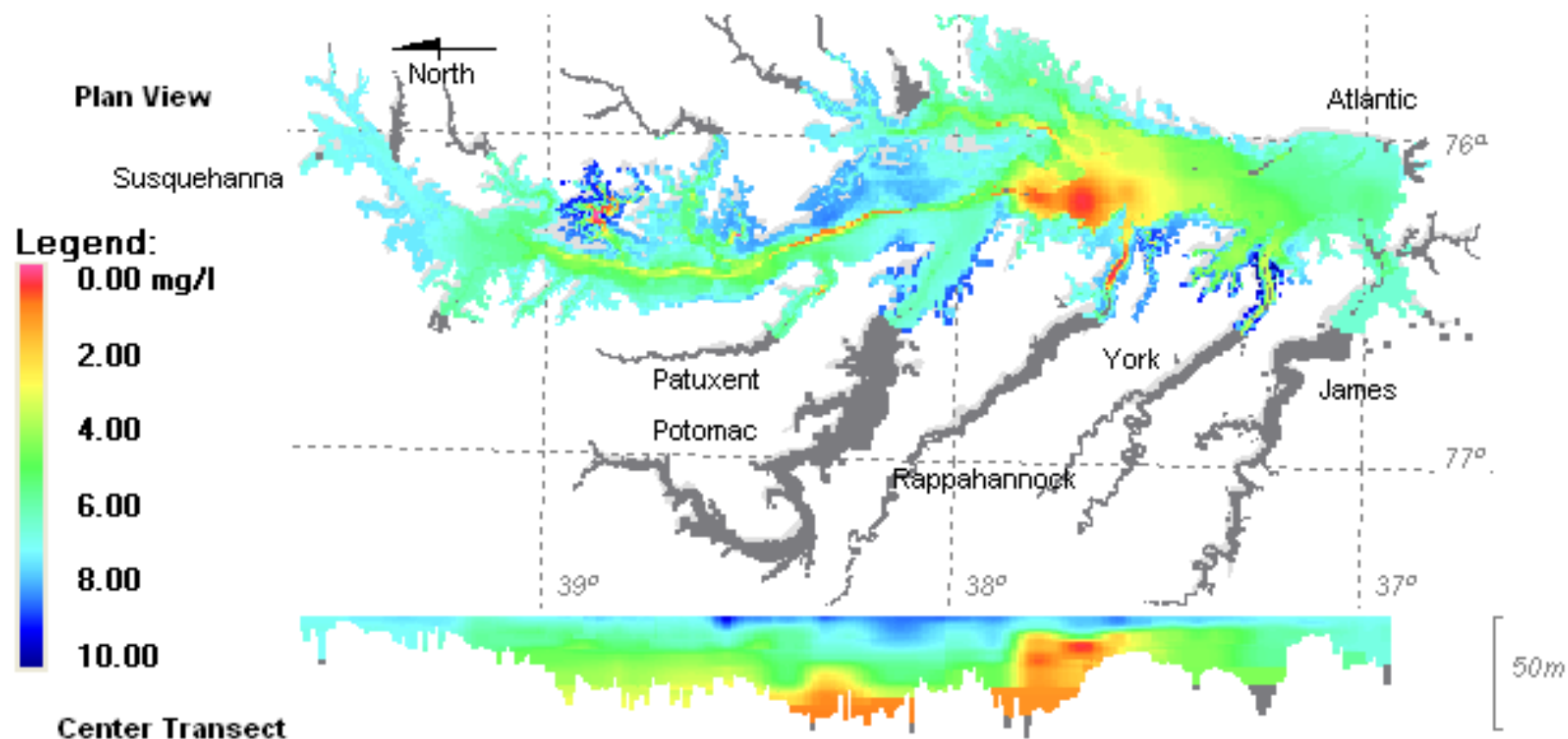




# CHESAPEAKE BAY

## Planview Plot of Minimum Conditions

Second August 2011 Cruise - Aug 29, 2011-Aug 31, 2011

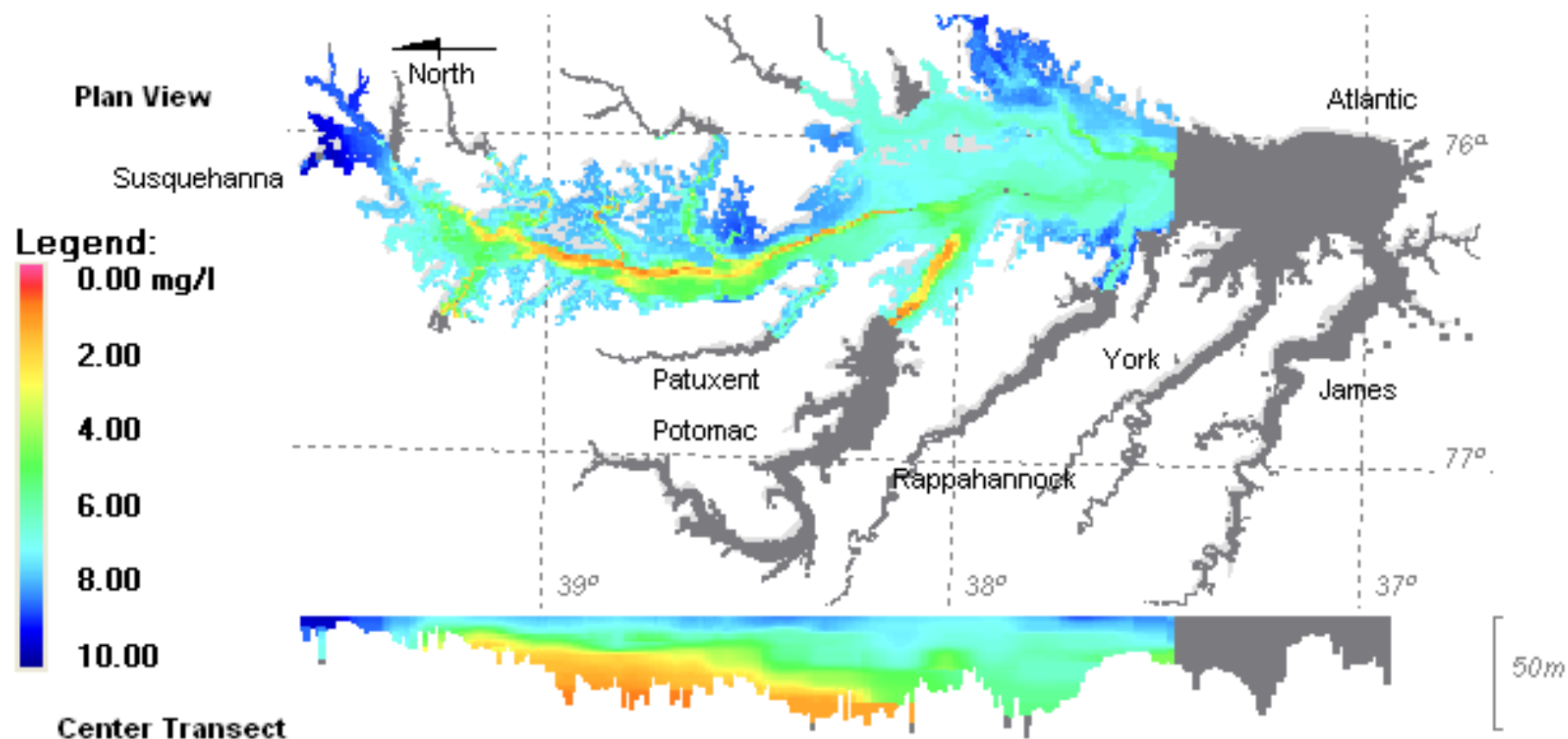




# CHESAPEAKE BAY

## Planview Plot of Minimum Conditions

Late September 2011 Cruise - Sep 19, 2011-Sep 21, 2011

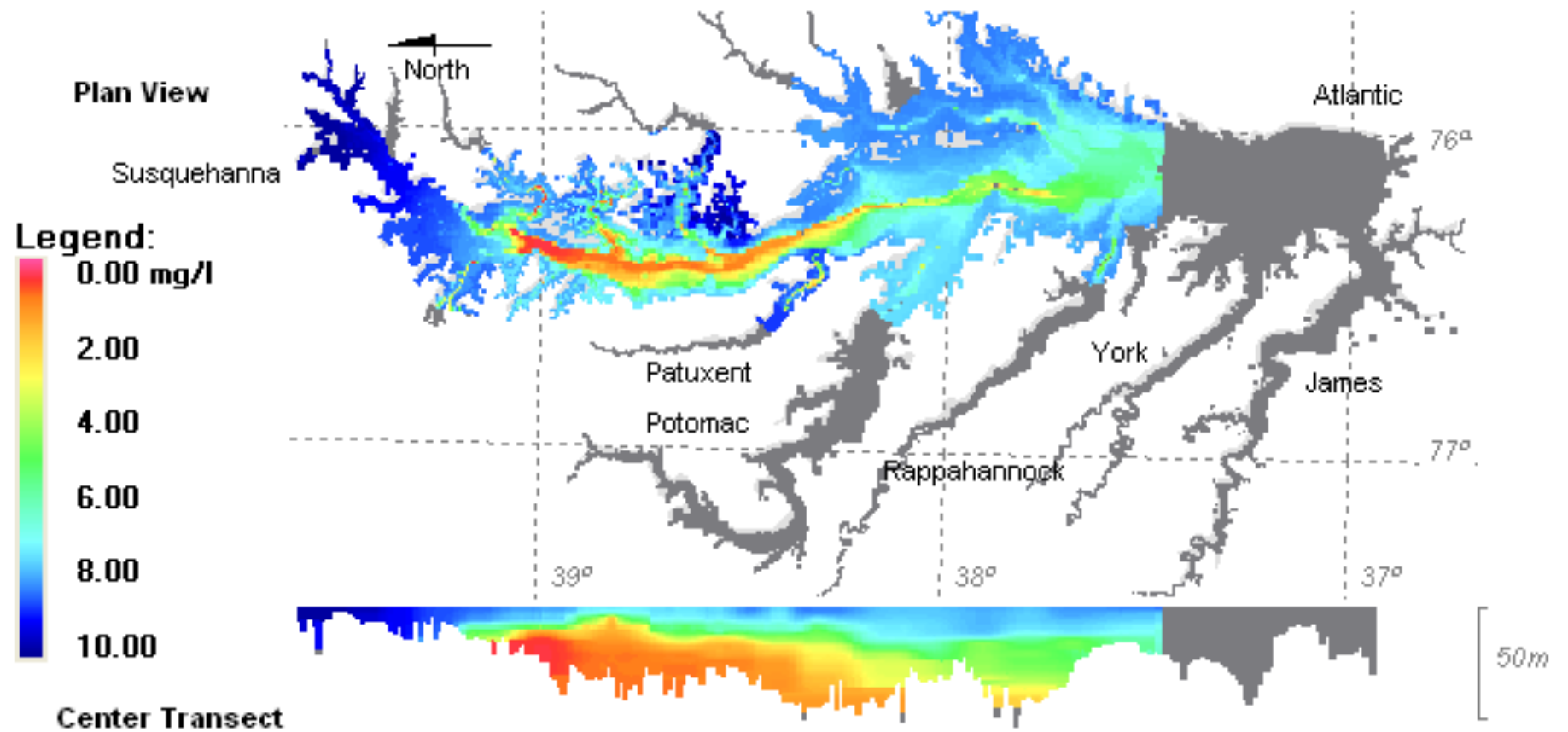




# CHESAPEAKE BAY

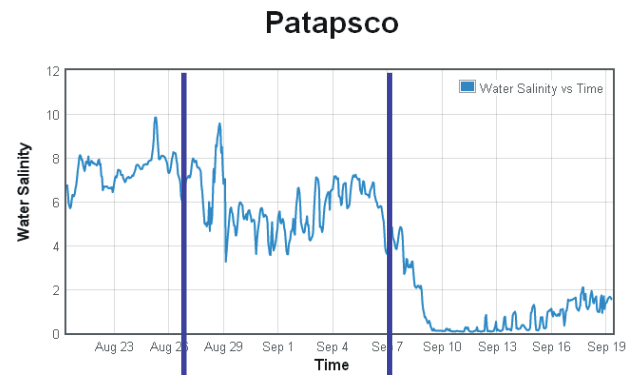
## Planview Plot of Minimum Conditions

First October 2011 Cruise - Oct 3, 2011-Oct 5, 2011

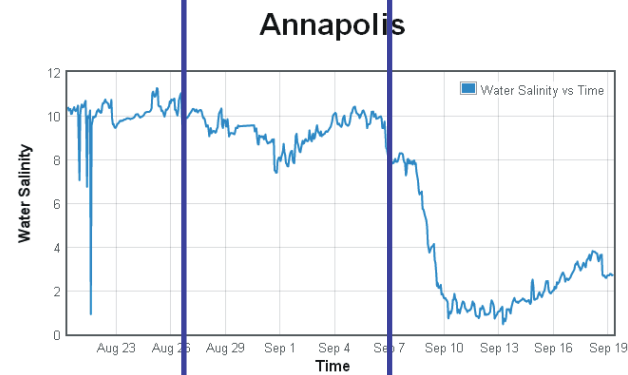




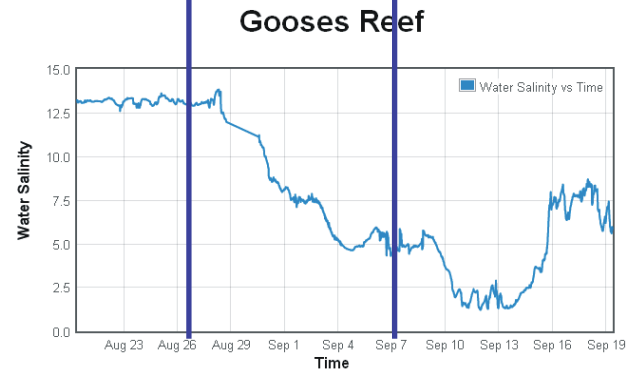
**Salinity from  
NOAA Buoys**  
([www.buoybay.org](http://www.buoybay.org))



From: 2011-08-20 09:00:00 To: 2011-09-19 09:00:00



From: 2011-08-20 08:00:00 To: 2011-09-19 08:00:00



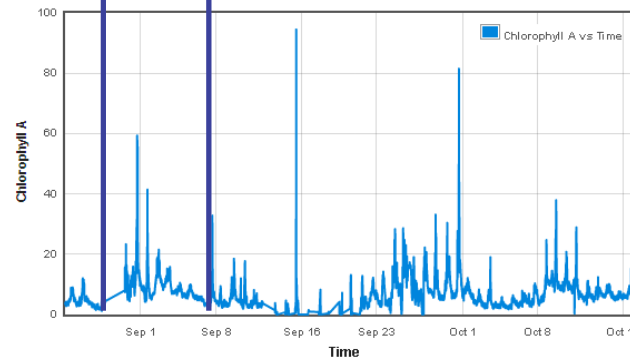
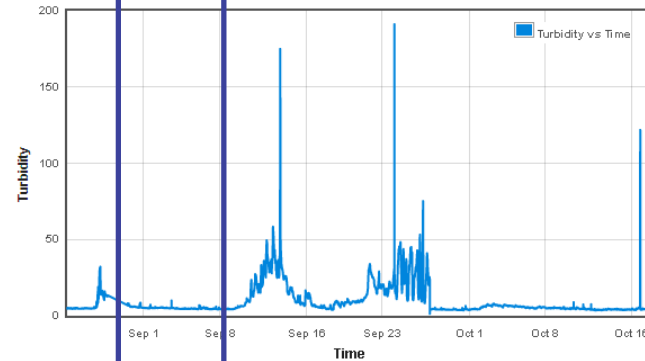
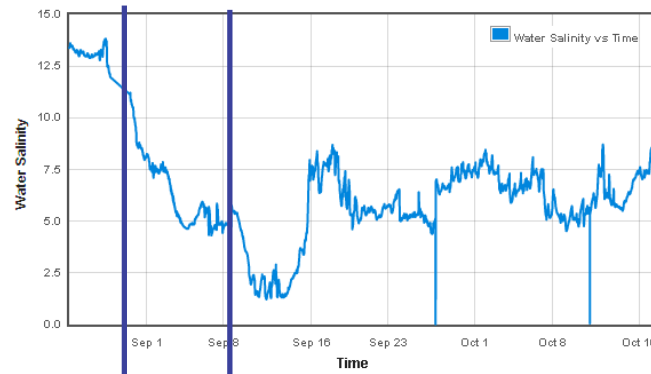
From: 2011-08-20 09:20:00 To: 2011-09-19 09:20:00

**Irene Lee**

**NOAA/DNR  
Dominion Gooses Reef  
Buoy**

([www.buoybay.org](http://www.buoybay.org))

**Irene Lee** Gooses Reef

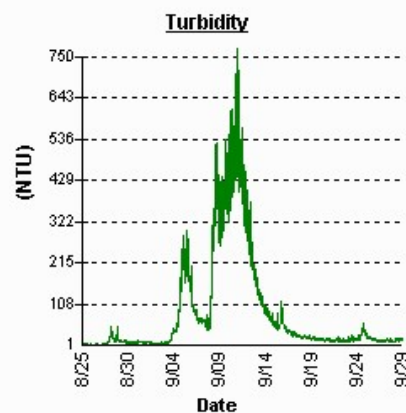
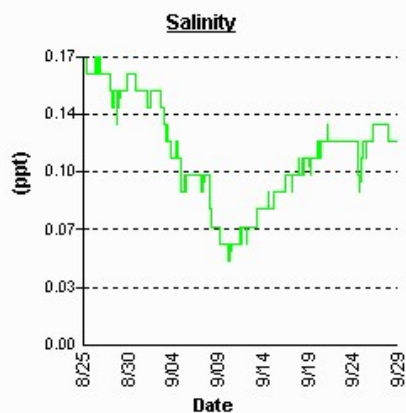
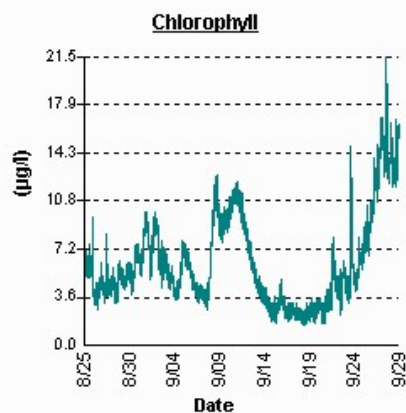
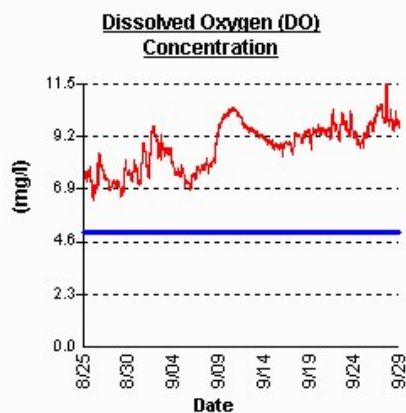


**Salinity**

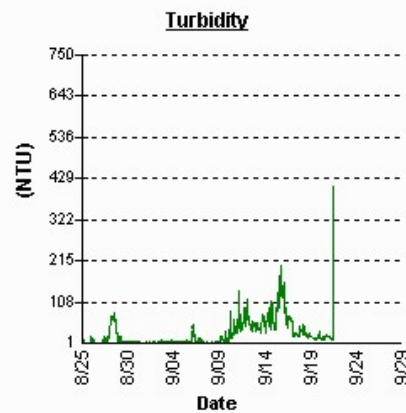
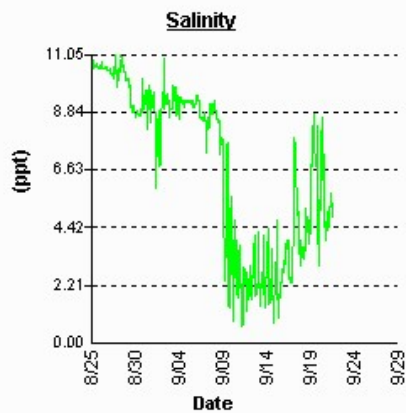
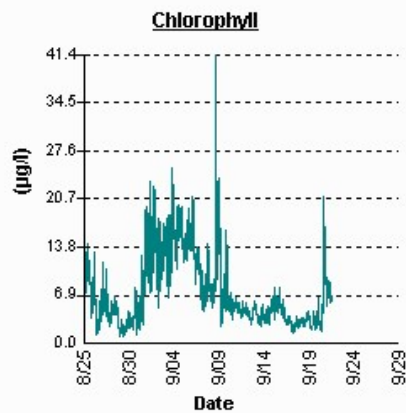
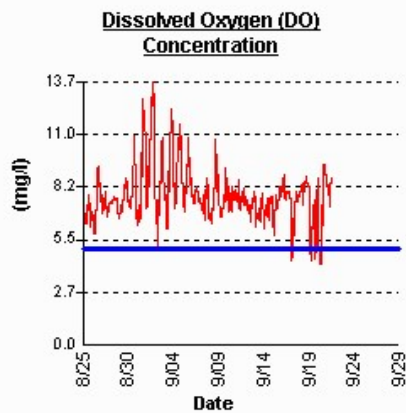
**Turbidity**

**Algae**

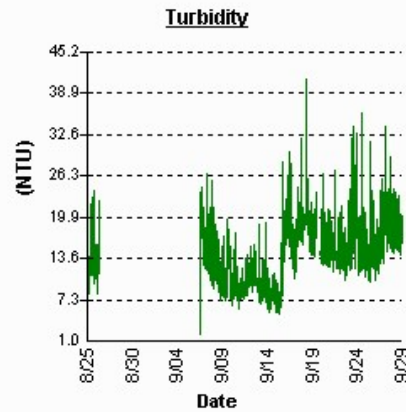
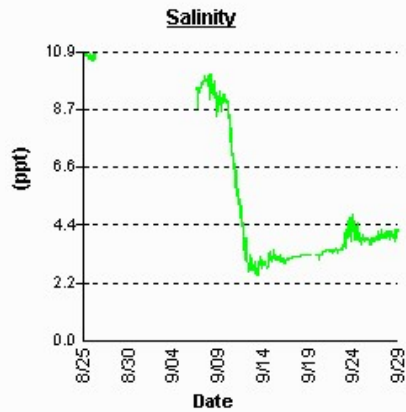
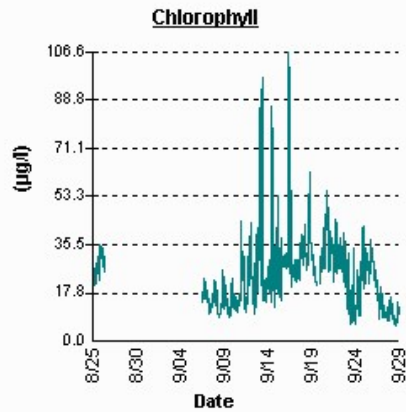
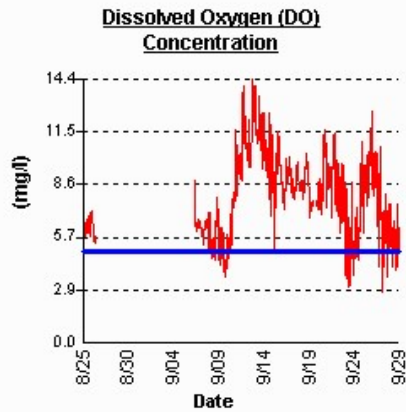
# Havre de Grace



# Love Point



# West River



# Summary

- Elevated turbidity in Susquehanna River from September 7<sup>th</sup>, 2011 to present
- Dead zone temporarily eliminated by Hurricane Irene
- Anoxic conditions reset after Tropical Storm Lee
- This muddy water contained large amounts of nutrients capable of fueling large algal blooms which could rob the waters of dissolved oxygen when the algae would die and settle to the bottom to decompose.
- This large discolored freshwater plume could have major impacts to the Bay's fish, shellfish and underwater grass communities by smothering habitat, blocking light and decreasing salinity levels for an extended time.

# EYES ON THE BAY

**For more current water quality conditions of Maryland's tidal waters,**

- *visit us on the web: [eyesonthebay.net](http://eyesonthebay.net)*
- *On Twitter: @eyesonthebay*
- *On Facebook: Eyes on the bay*